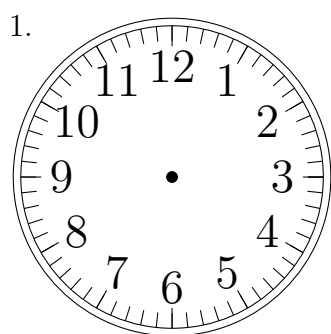
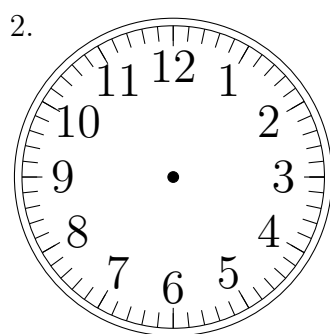


# Place d'Aiguilles sur une Horloge Analogique (H)

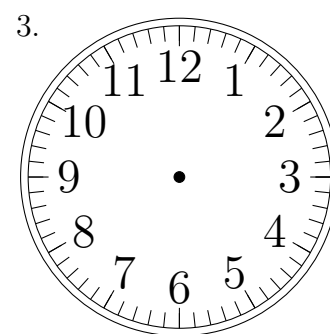
Placer les aiguilles de l'horloge pour qu'elles montrent le temps indiqué.



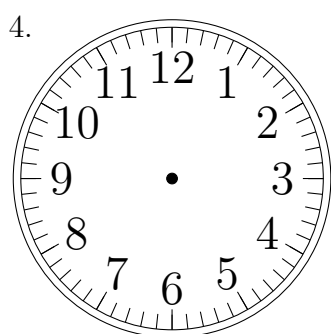
2:00:00



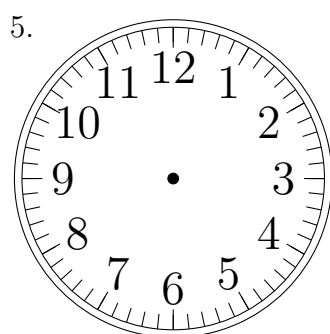
10:00:00



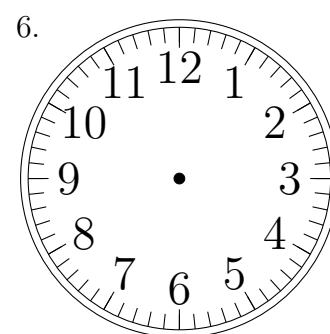
7:00:00



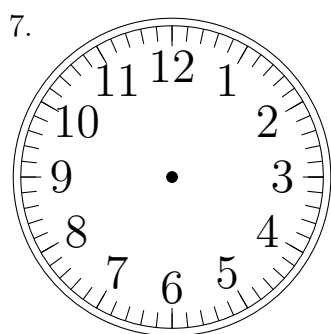
10:00:00



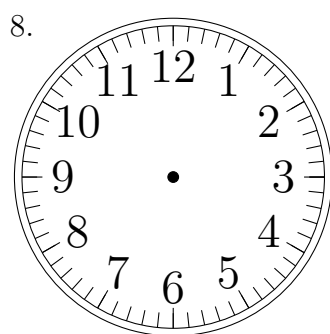
9:00:00



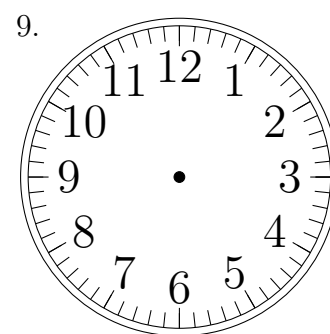
11:00:00



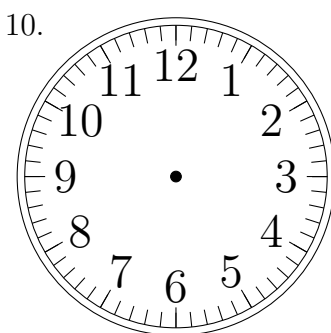
8:00:00



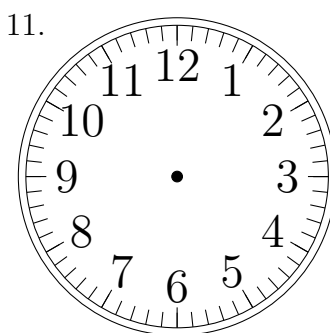
2:00:00



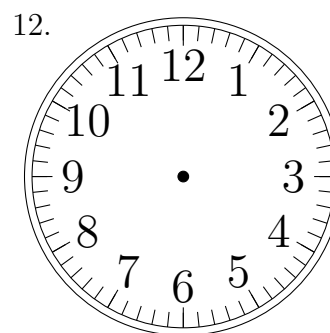
5:00:00



1:00:00



3:00:00

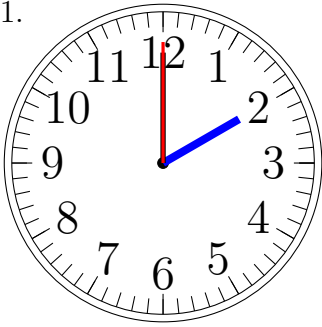


5:00:00

# Place d'Aiguilles sur une Horloge Analogique (H) Solutions

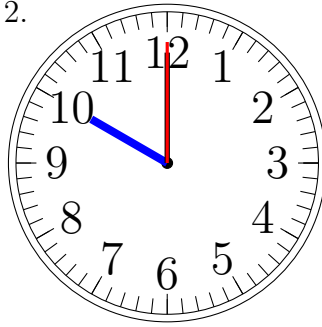
Placer les aiguilles de l'horloge pour qu'elles montrent le temps indiqué.

1.



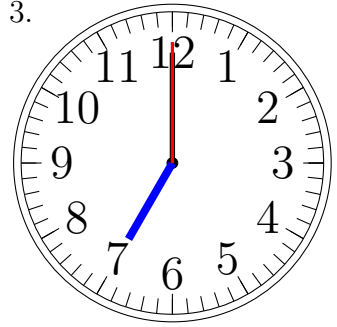
2:00:00

2.



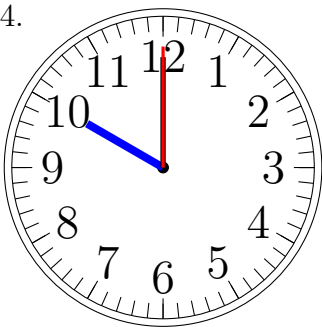
10:00:00

3.



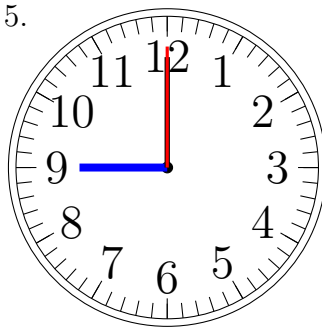
7:00:00

4.



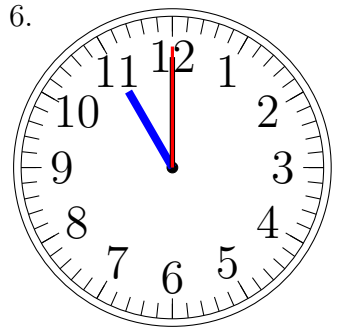
10:00:00

5.



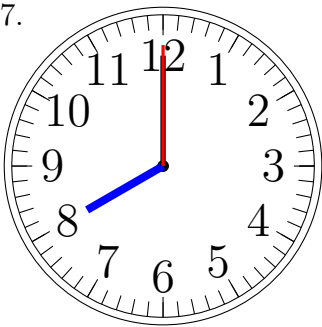
9:00:00

6.



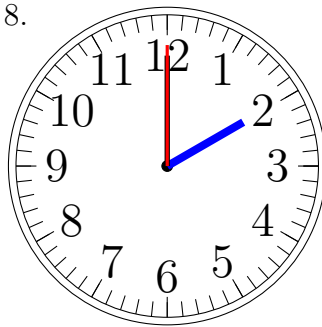
11:00:00

7.



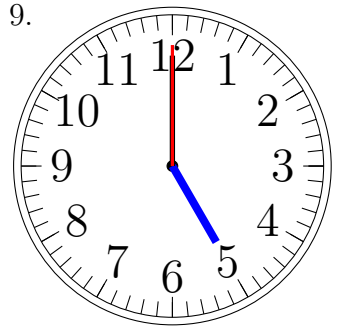
8:00:00

8.



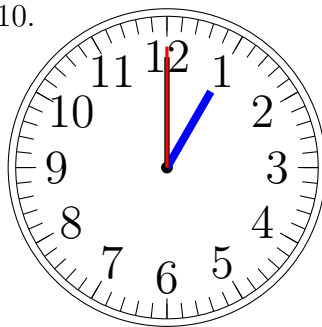
2:00:00

9.



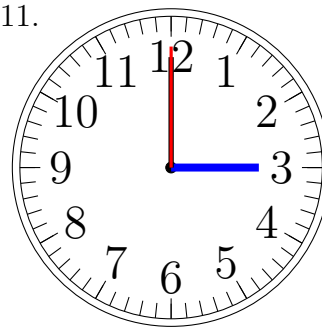
5:00:00

10.



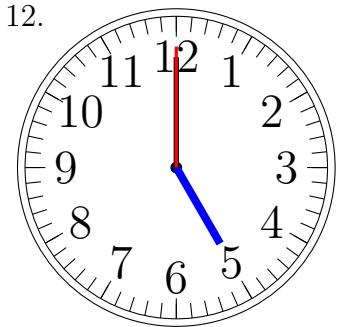
1:00:00

11.



3:00:00

12.



5:00:00