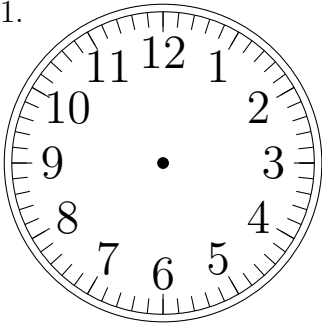


Place d'Aiguilles sur une Horloge Analogique (F)

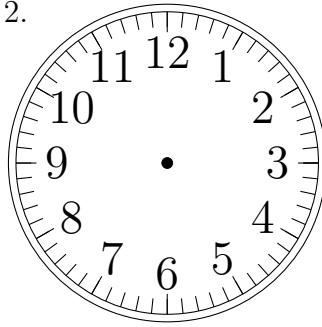
Placer les aiguilles de l'horloge pour qu'elles montrent le temps indiqué.

1.



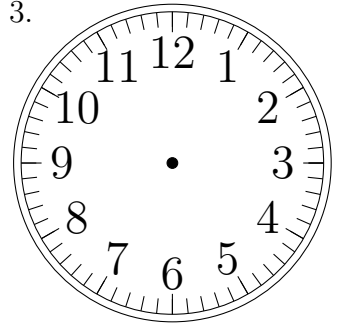
7:00:00

2.



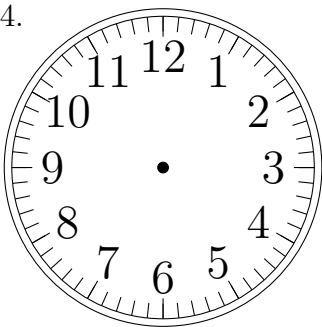
4:00:00

3.



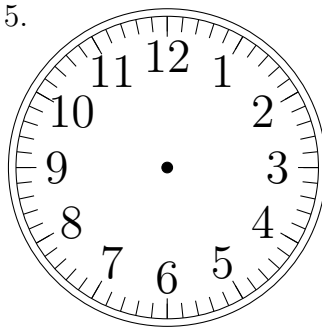
10:00:00

4.



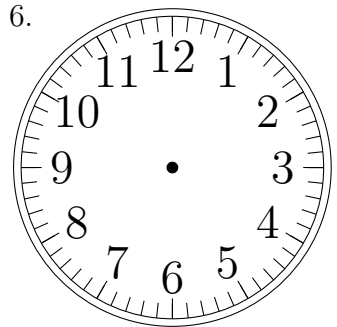
3:00:00

5.



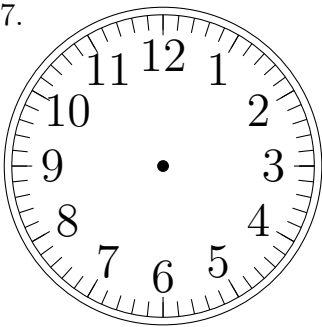
4:00:00

6.



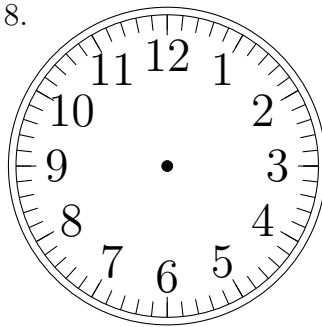
12:00:00

7.



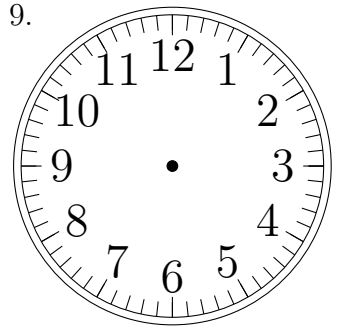
8:00:00

8.



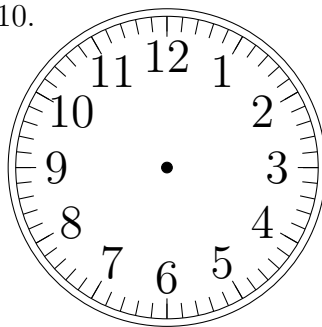
6:00:00

9.



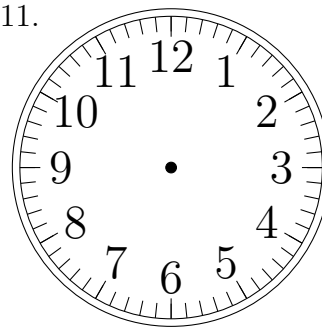
6:00:00

10.



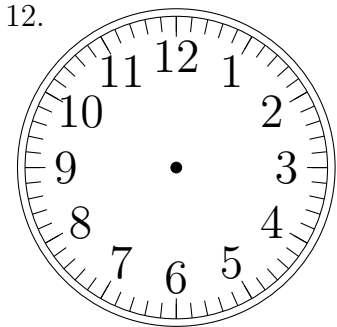
2:00:00

11.



1:00:00

12.

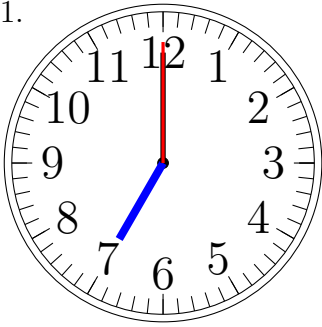


5:00:00

Place d'Aiguilles sur une Horloge Analogique (F) Solutions

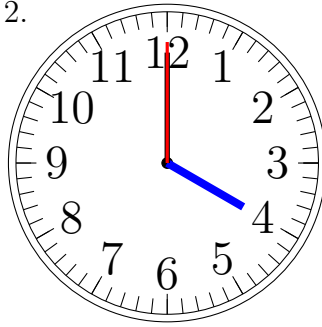
Placer les aiguilles de l'horloge pour qu'elles montrent le temps indiqué.

1.



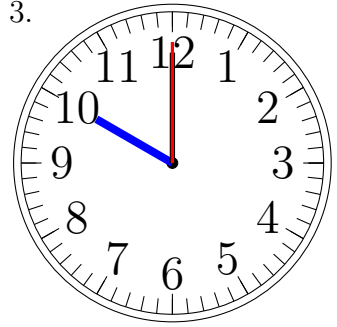
7:00:00

2.



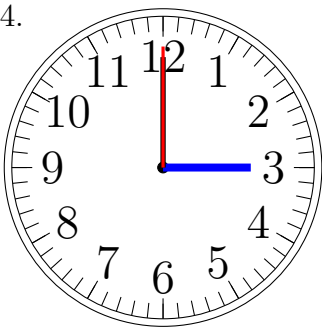
4:00:00

3.



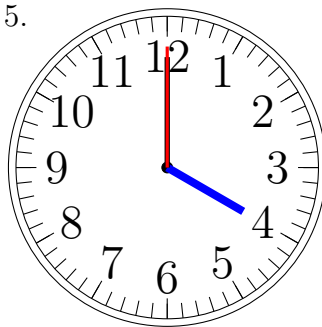
10:00:00

4.



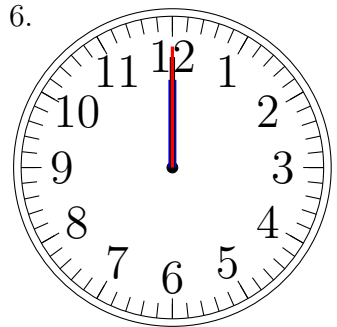
3:00:00

5.



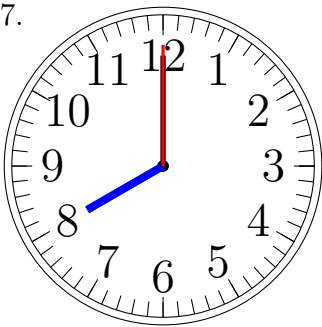
4:00:00

6.



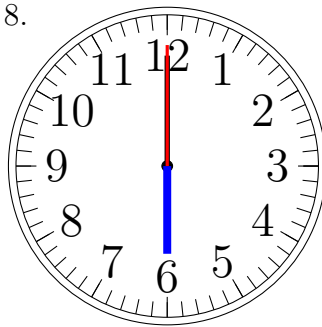
12:00:00

7.



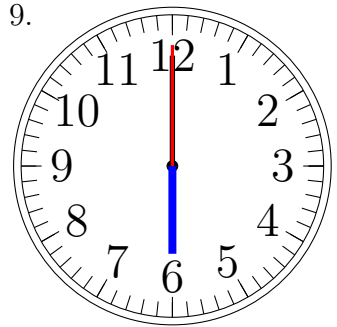
8:00:00

8.



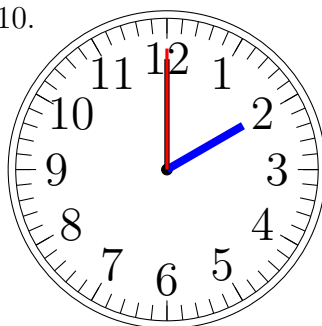
6:00:00

9.



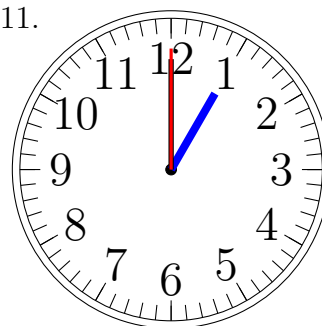
6:00:00

10.



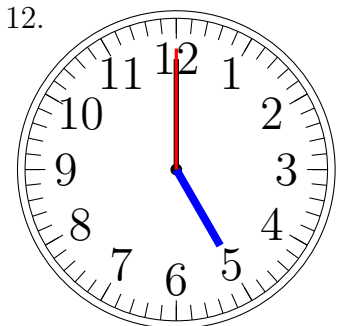
2:00:00

11.



1:00:00

12.



5:00:00