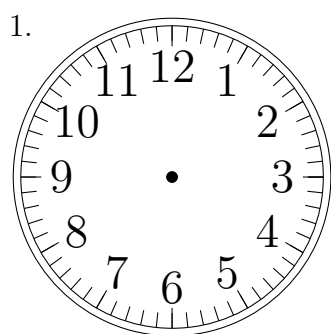
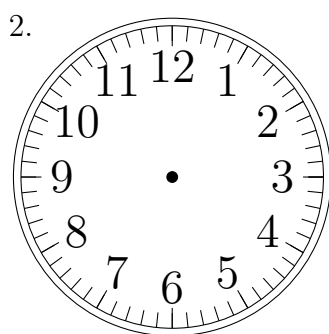


Place d'Aiguilles sur une Horloge Analogique (E)

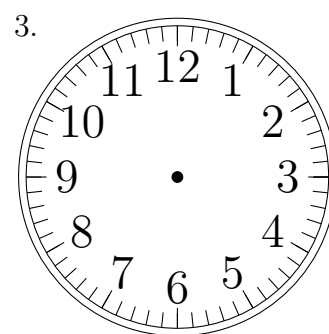
Placer les aiguilles de l'horloge pour qu'elles montrent le temps indiqué.



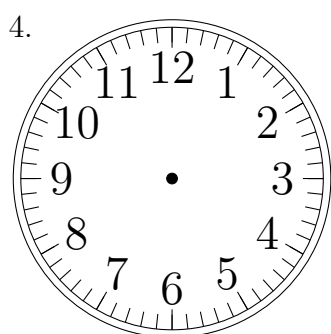
3:00:00



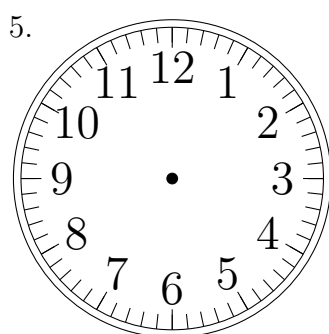
9:00:00



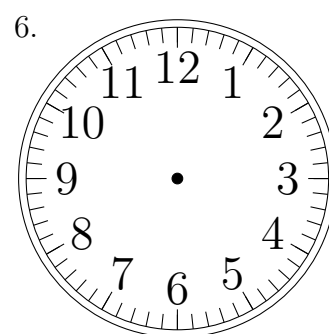
9:00:00



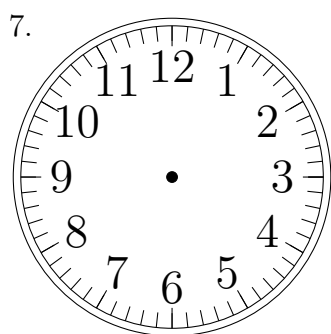
10:00:00



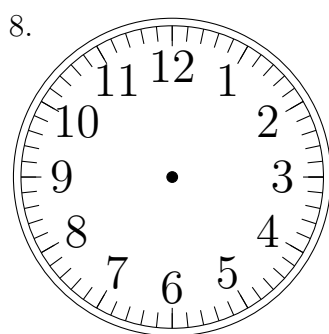
1:00:00



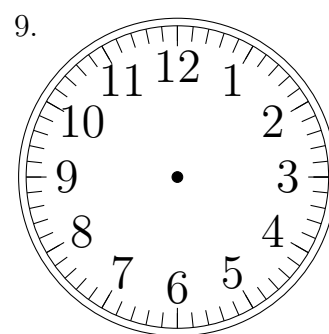
5:00:00



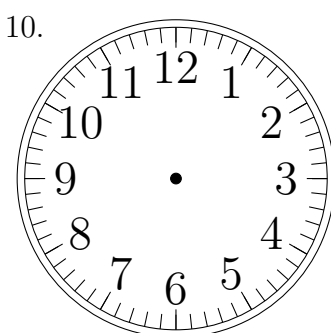
1:00:00



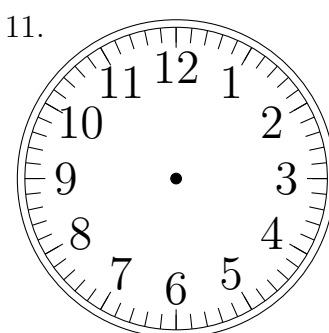
2:00:00



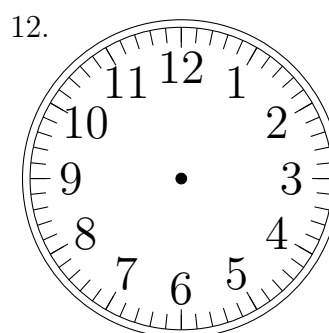
8:00:00



10:00:00



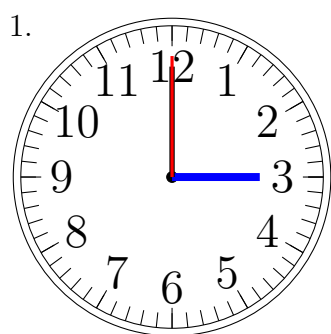
3:00:00



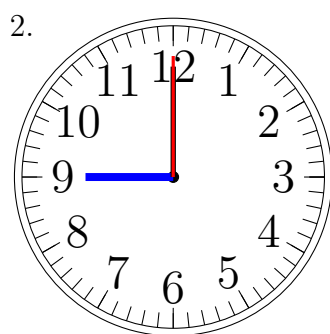
11:00:00

Place d'Aiguilles sur une Horloge Analogique (E) Solutions

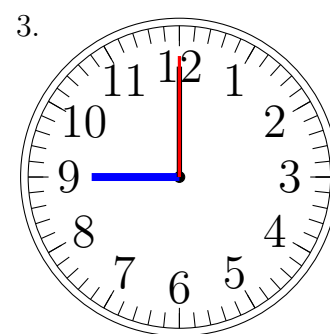
Placer les aiguilles de l'horloge pour qu'elles montrent le temps indiqué.



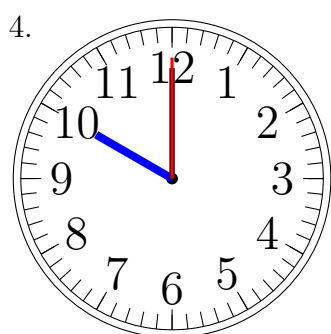
3:00:00



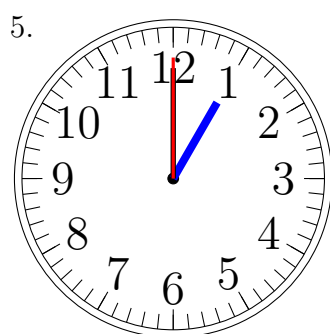
9:00:00



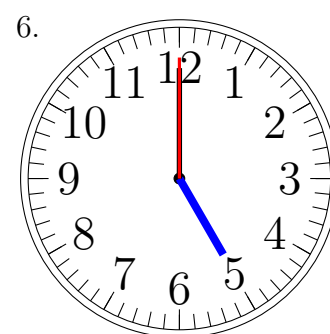
9:00:00



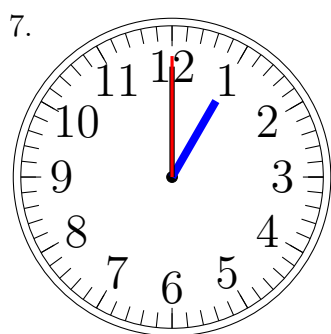
10:00:00



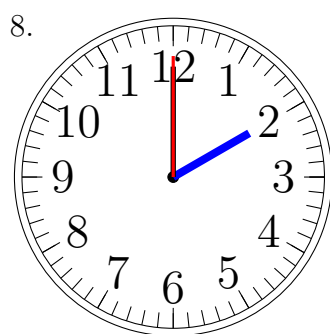
1:00:00



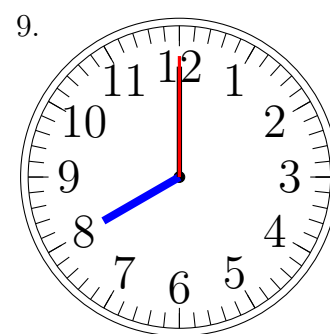
5:00:00



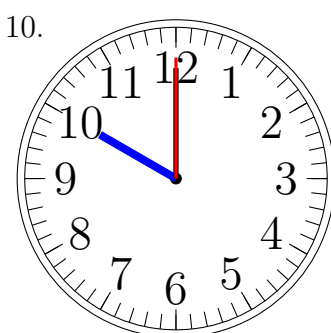
1:00:00



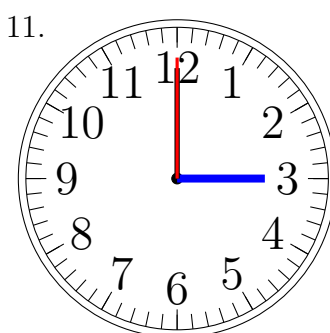
2:00:00



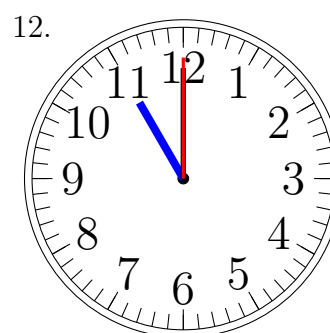
8:00:00



10:00:00



3:00:00



11:00:00