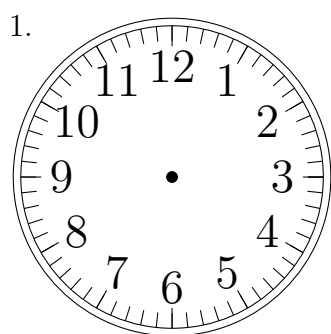
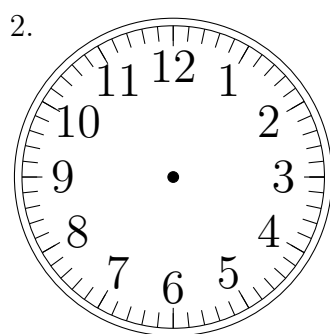


Place d'Aiguilles sur une Horloge Analogique (C)

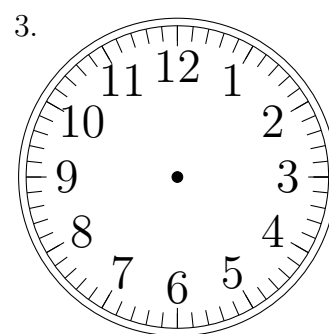
Placer les aiguilles de l'horloge pour qu'elles montrent le temps indiqué.



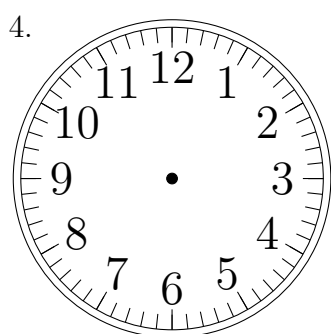
6:00:00



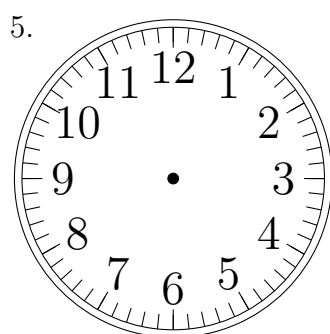
4:00:00



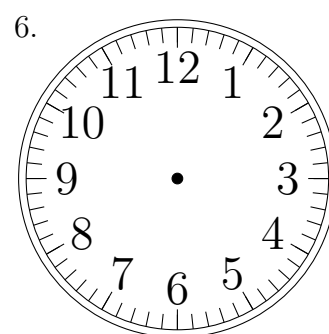
1:00:00



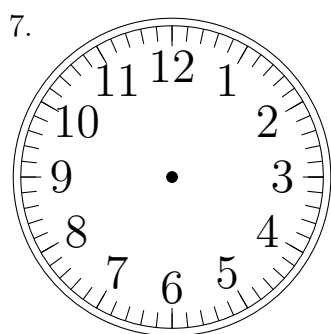
4:00:00



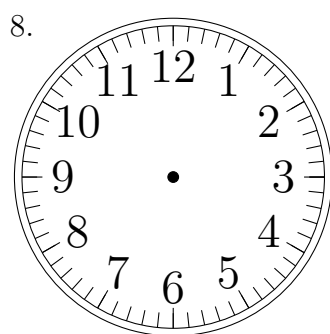
9:00:00



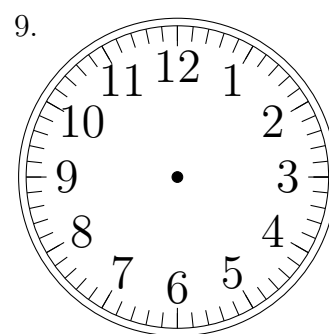
12:00:00



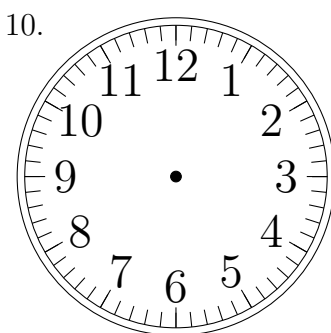
8:00:00



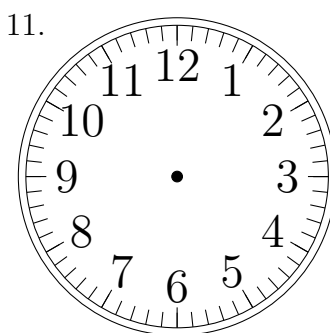
11:00:00



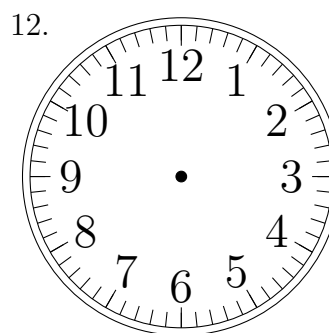
5:00:00



6:00:00



10:00:00

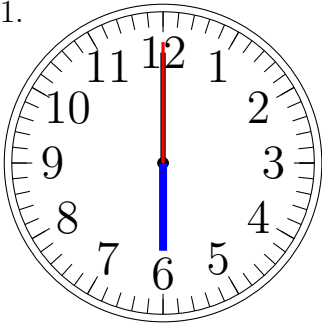


5:00:00

Place d'Aiguilles sur une Horloge Analogique (C) Solutions

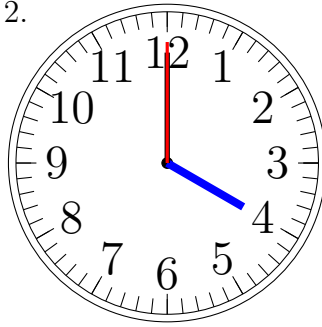
Placer les aiguilles de l'horloge pour qu'elles montrent le temps indiqué.

1.



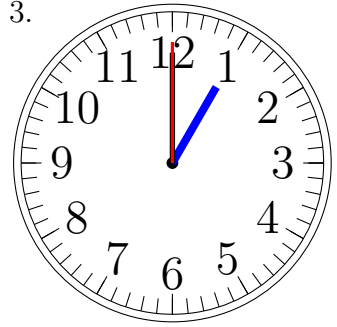
6:00:00

2.



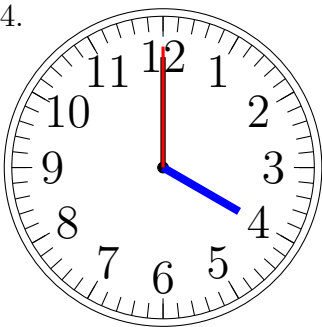
4:00:00

3.



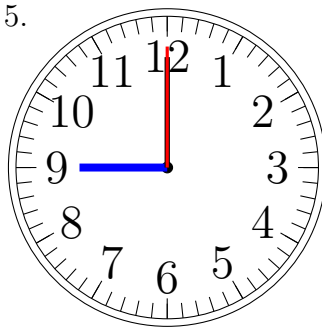
1:00:00

4.



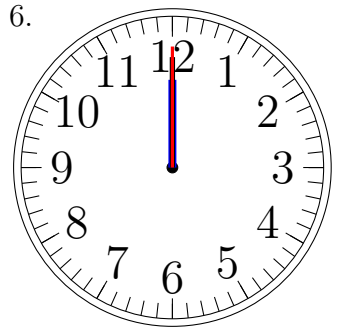
4:00:00

5.



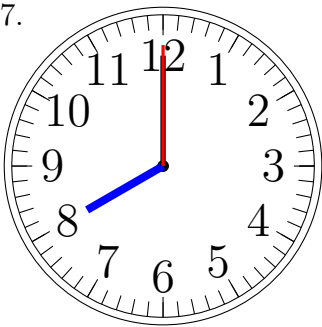
9:00:00

6.



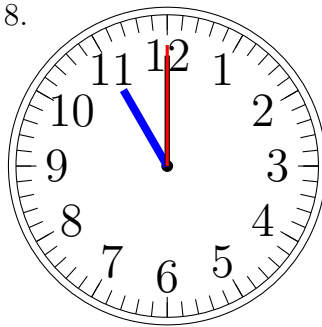
12:00:00

7.



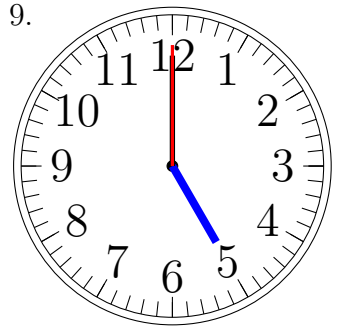
8:00:00

8.



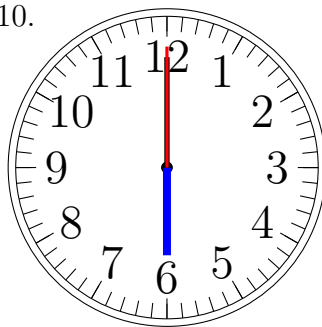
11:00:00

9.



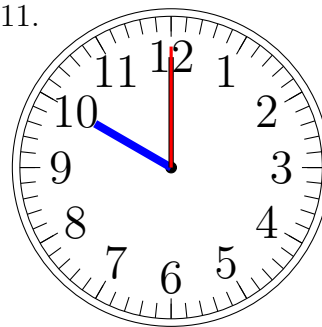
5:00:00

10.



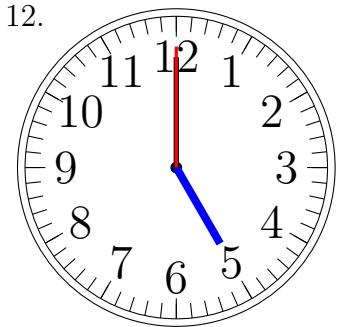
6:00:00

11.



10:00:00

12.



5:00:00