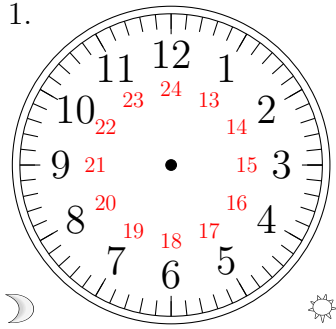


Place d'Aiguilles sur une Horloge Analogique (J)

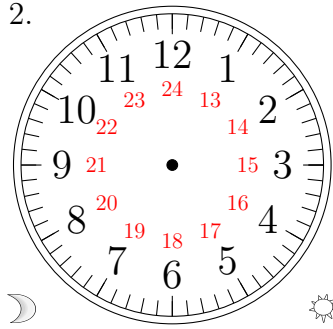
Placer les aiguilles de l'horloge pour qu'elles montrent le temps indiqué.

1.



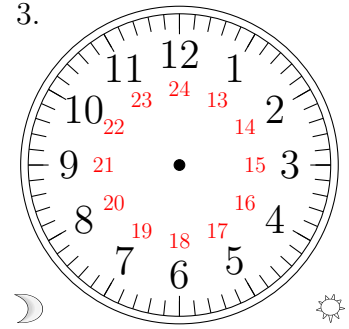
10:30:00

2.



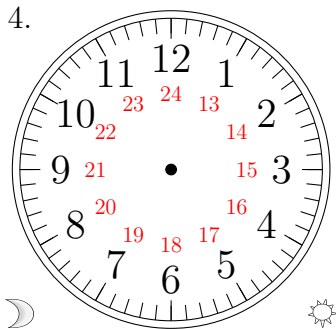
03:30:00

3.



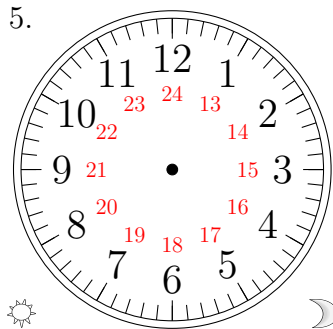
11:00:00

4.



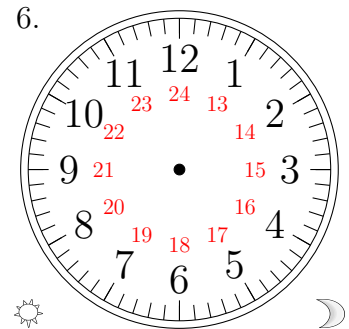
04:00:30

5.



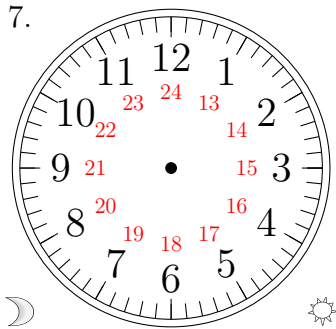
13:00:30

6.



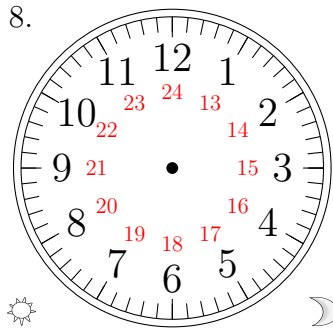
19:30:30

7.



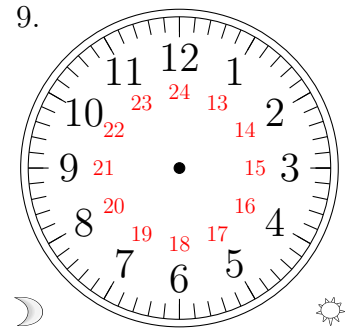
06:00:30

8.



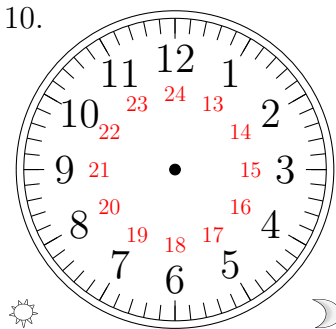
17:30:30

9.



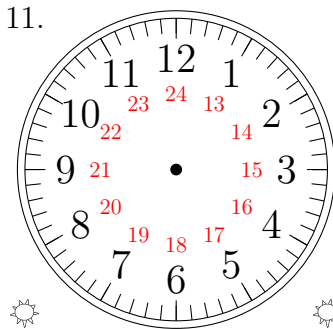
02:00:00

10.



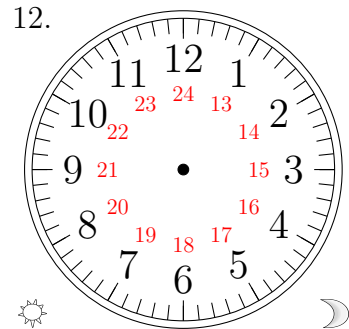
20:30:00

11.



12:00:00

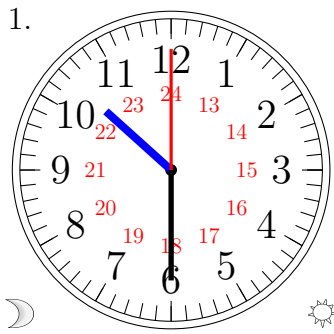
12.



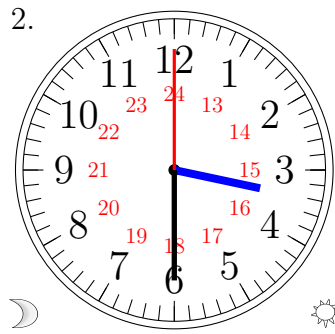
16:30:30

Place d'Aiguilles sur une Horloge Analogique (J) Solutions

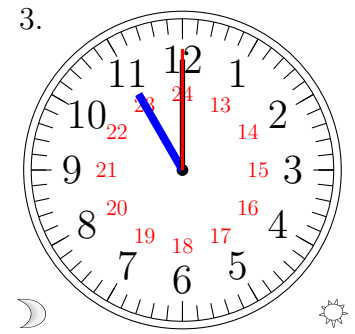
Placer les aiguilles de l'horloge pour qu'elles montrent le temps indiqué.



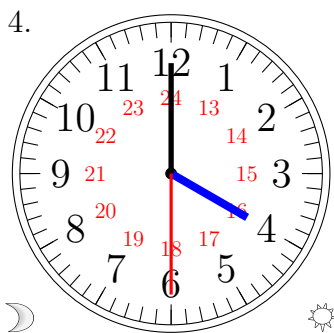
10:30:00



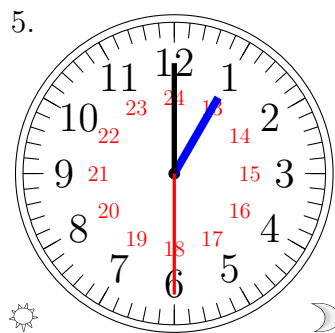
03:30:00



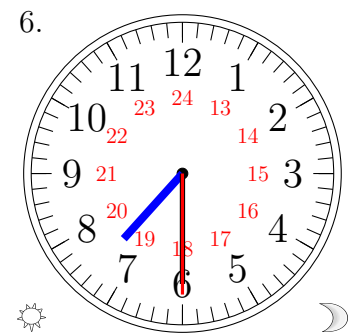
11:00:00



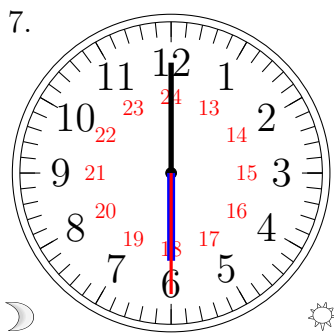
04:00:30



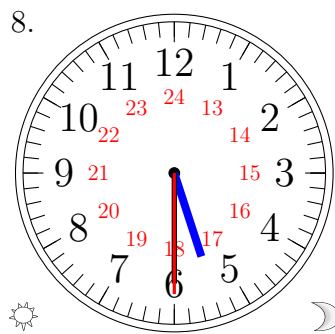
13:00:30



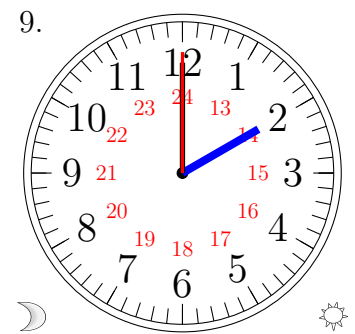
19:30:30



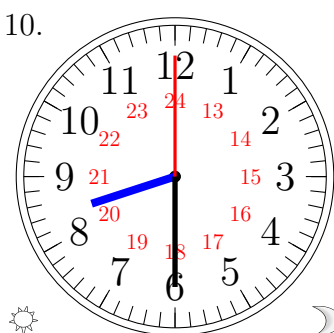
06:00:30



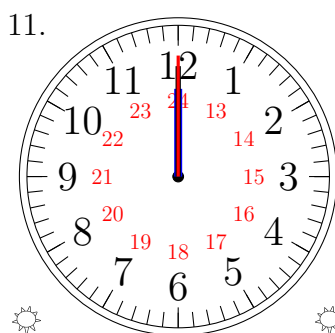
17:30:30



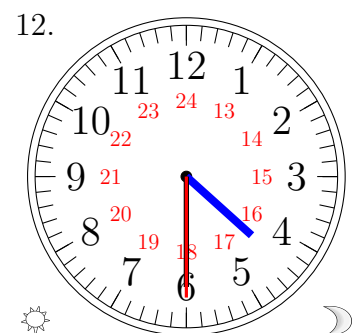
02:00:00



20:30:00



12:00:00



16:30:30