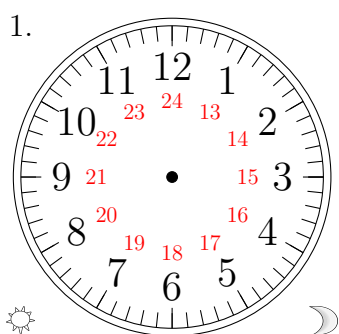
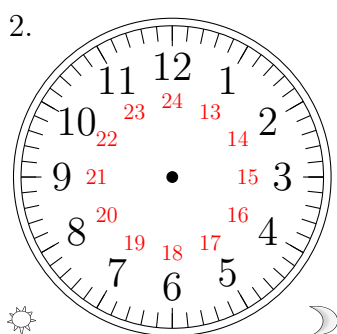


# Place d'Aiguilles sur une Horloge Analogique (H)

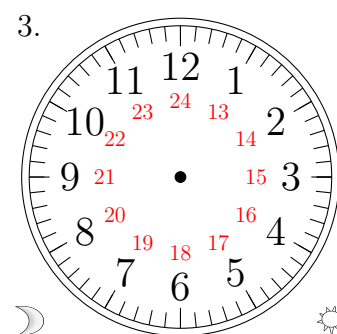
Placer les aiguilles de l'horloge pour qu'elles montrent le temps indiqué.



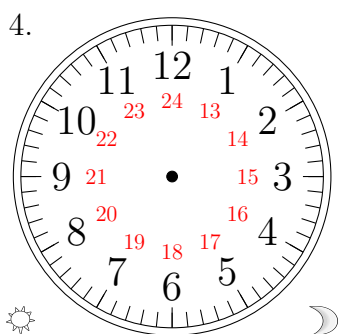
23:00:30



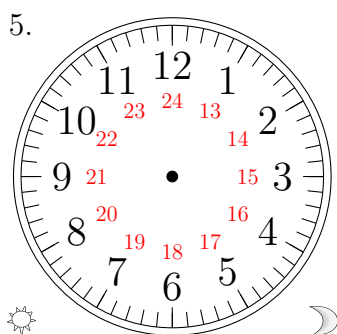
20:30:30



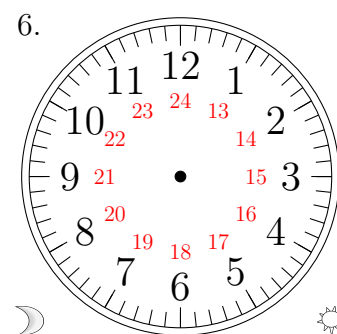
08:00:30



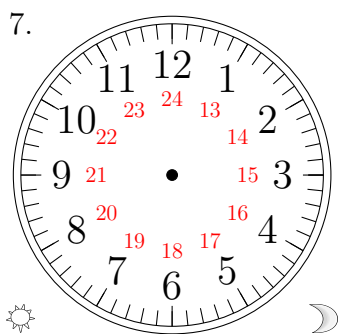
22:30:00



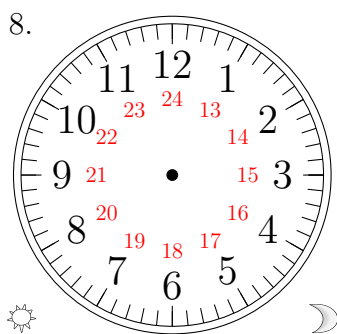
15:00:00



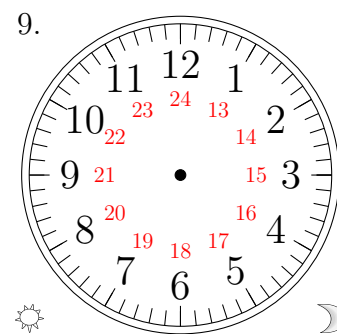
06:30:00



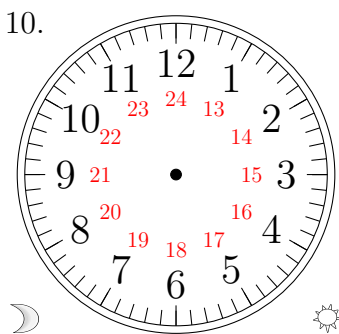
18:30:30



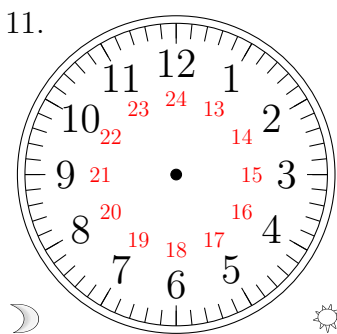
13:30:30



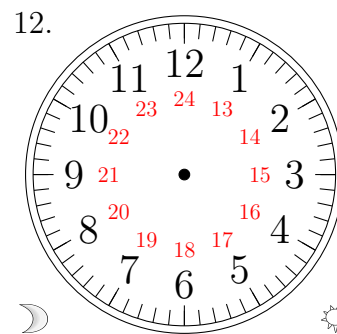
17:30:00



01:00:00



04:00:00

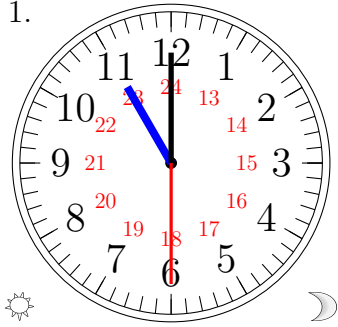


10:00:30

# Place d'Aiguilles sur une Horloge Analogique (H) Solutions

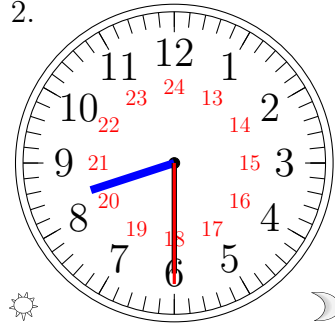
Placer les aiguilles de l'horloge pour qu'elles montrent le temps indiqué.

1.



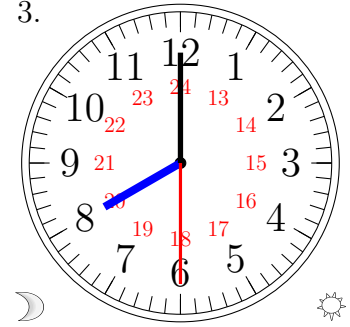
23:00:30

2.



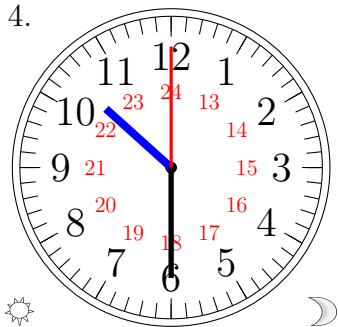
20:30:30

3.



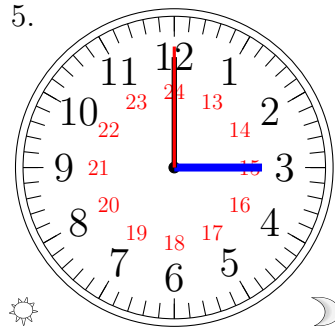
08:00:30

4.



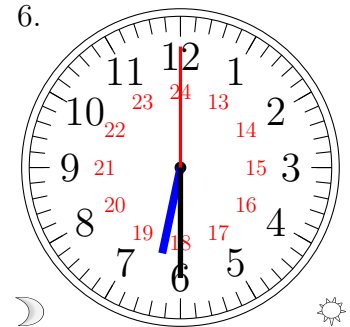
22:30:00

5.



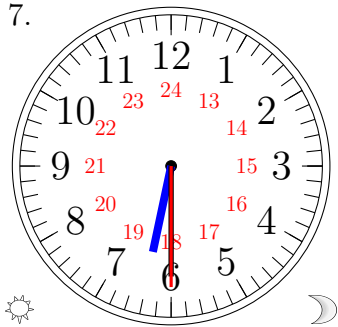
15:00:00

6.



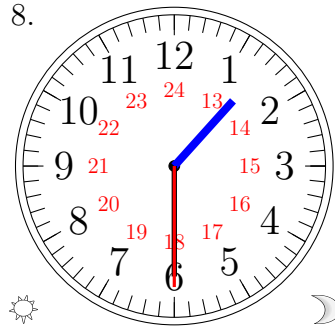
06:30:00

7.



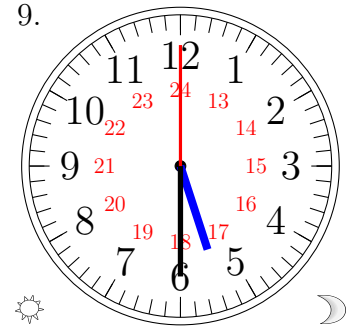
18:30:30

8.



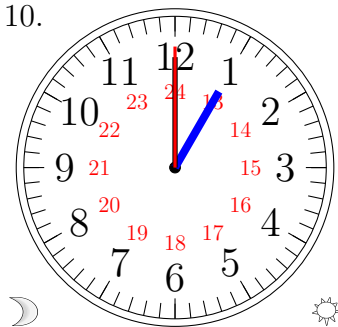
13:30:30

9.



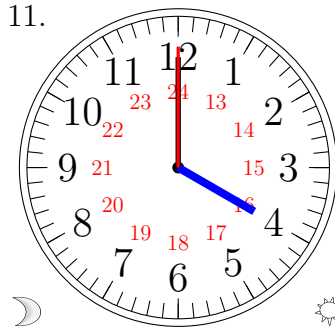
17:30:00

10.



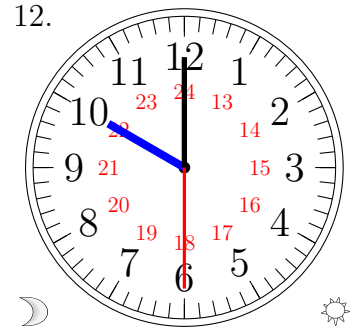
01:00:00

11.



04:00:00

12.



10:00:30