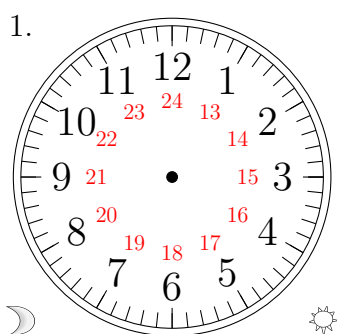
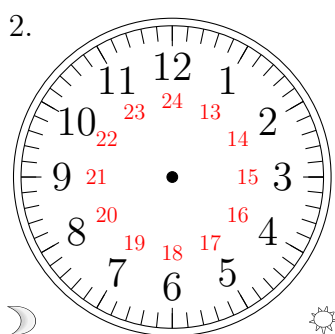


Place d'Aiguilles sur une Horloge Analogique (B)

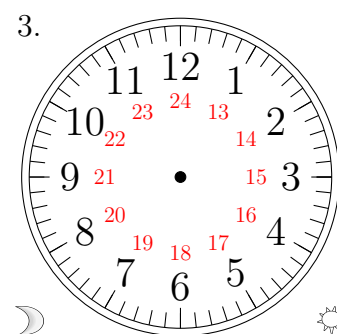
Placer les aiguilles de l'horloge pour qu'elles montrent le temps indiqué.



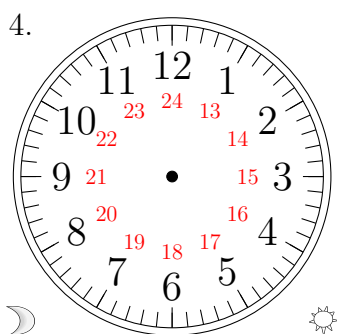
07:30:30



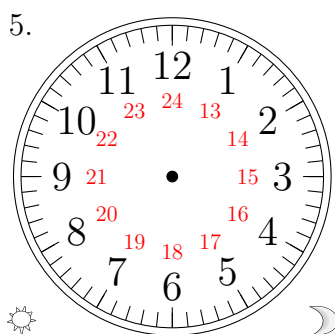
04:00:00



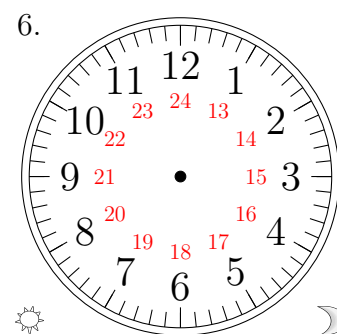
05:00:30



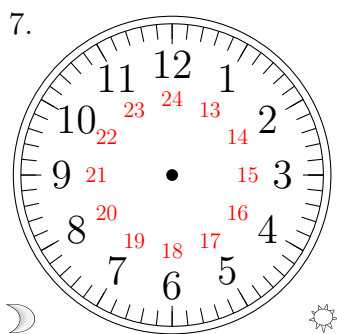
03:00:00



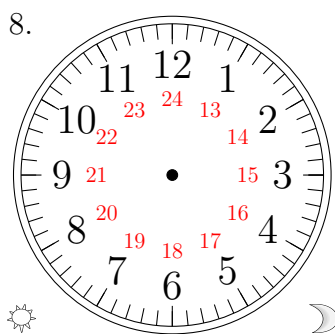
23:30:30



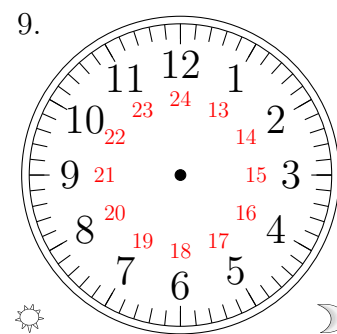
13:30:00



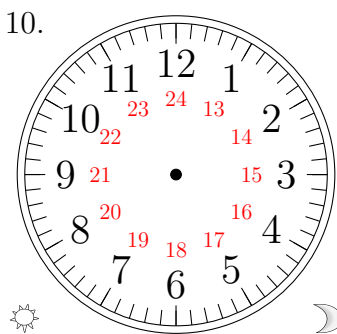
11:00:30



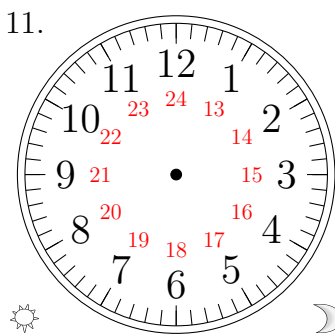
14:00:00



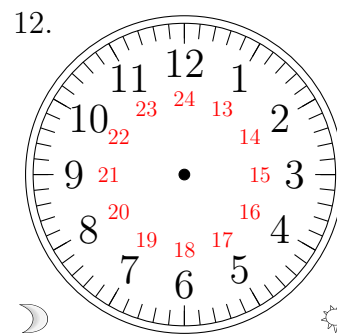
17:00:00



20:30:00



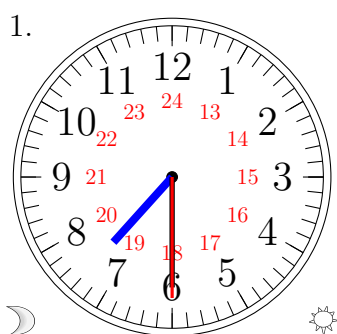
16:30:30



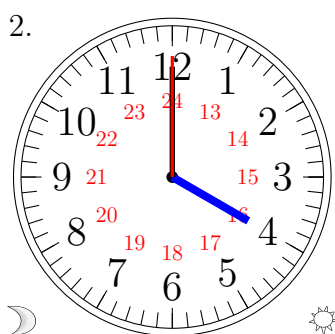
10:30:30

Place d'Aiguilles sur une Horloge Analogique (B) Solutions

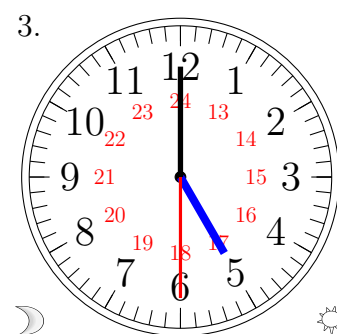
Placer les aiguilles de l'horloge pour qu'elles montrent le temps indiqué.



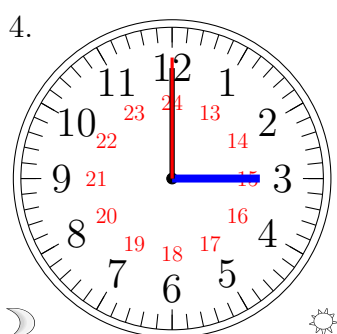
07:30:30



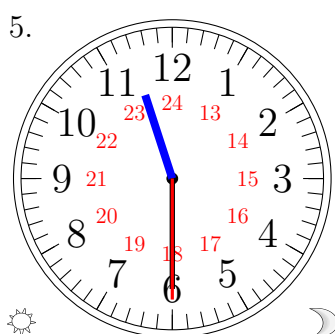
04:00:00



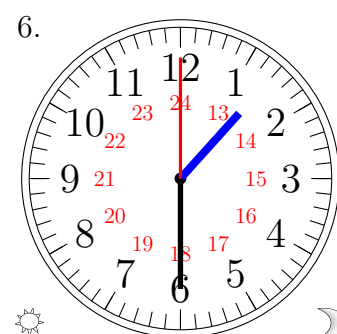
05:00:30



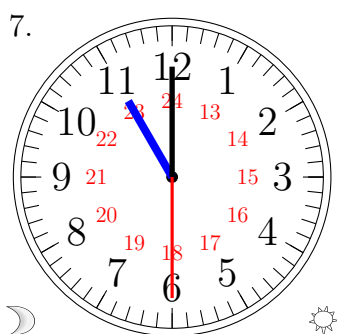
03:00:00



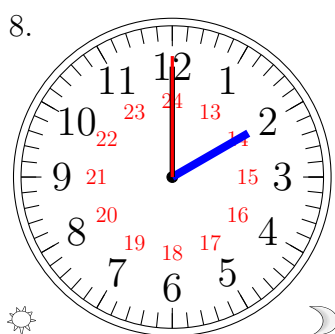
23:30:30



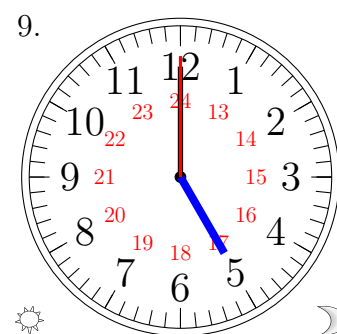
13:30:00



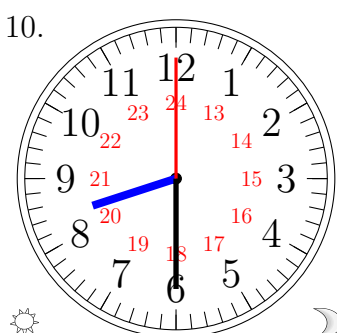
11:00:30



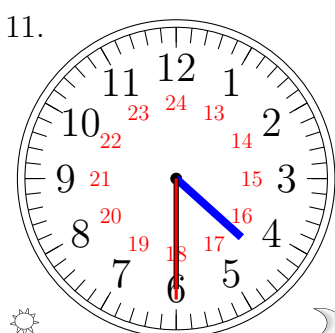
14:00:00



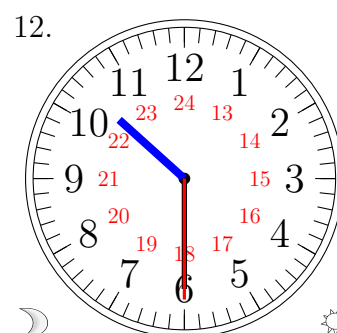
17:00:00



20:30:00



16:30:30



10:30:30