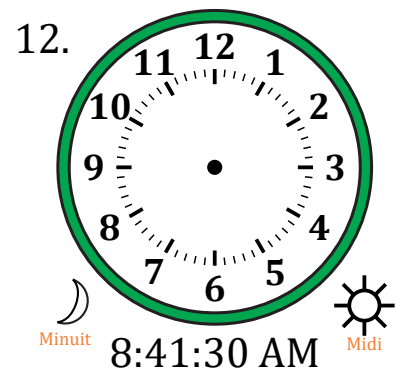
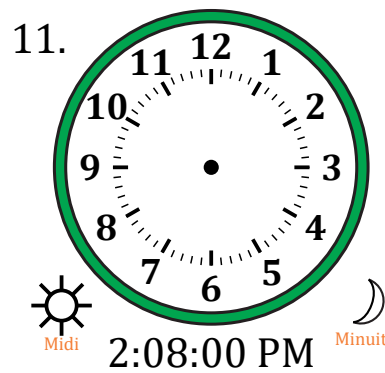
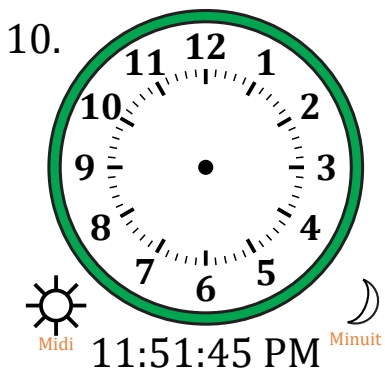
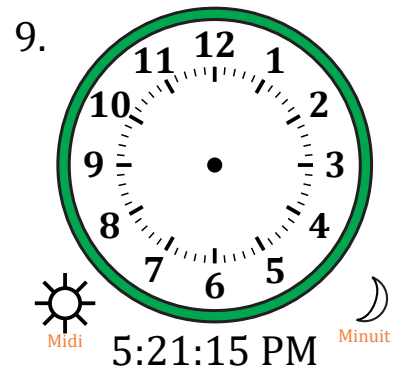
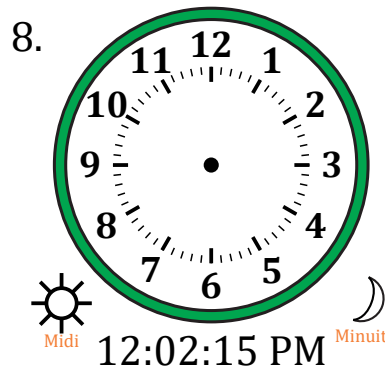
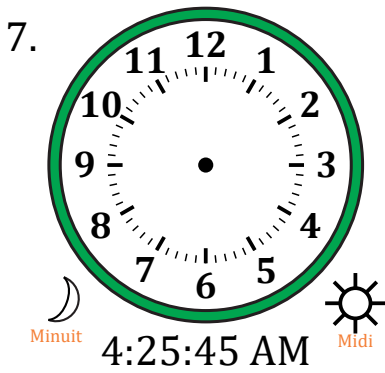
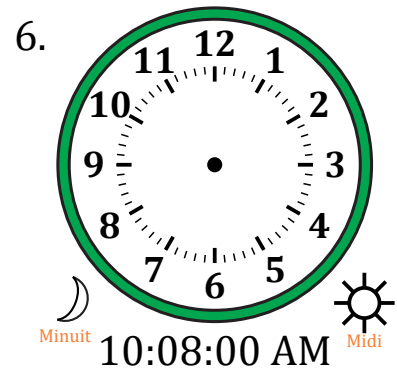
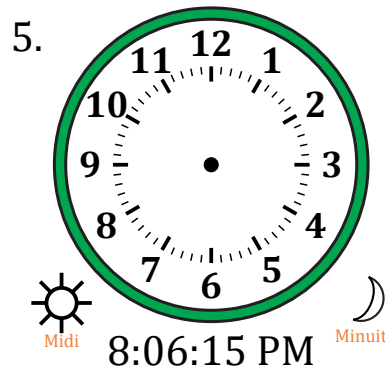
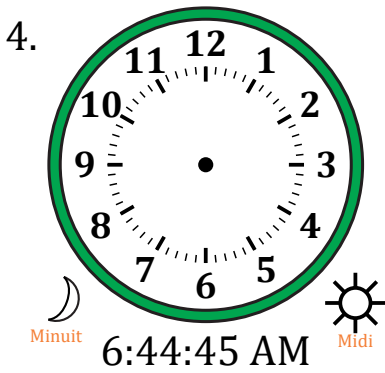
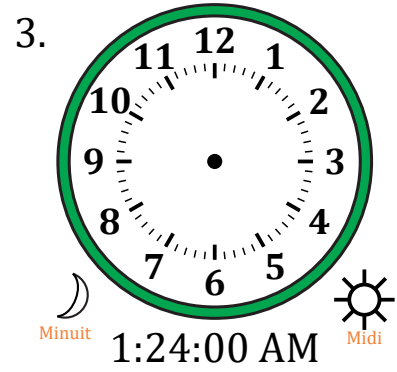
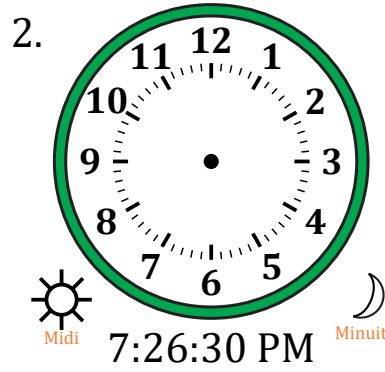
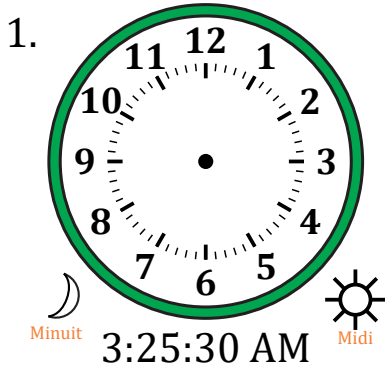


Place d'Aiguilles sur Une Horloge Analogique (E)

Nom: _____

Date: _____

Placer les aiguilles de l'horloge pour qu'elles montrent le temps indiqué.

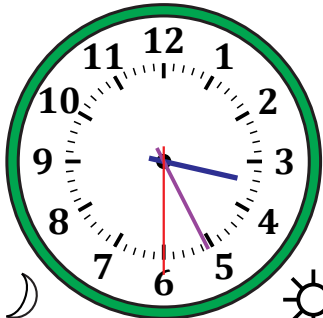




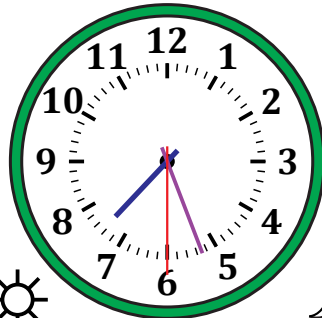


Place d'Aiguilles sur Une Horloge Analogique (E) Solutions

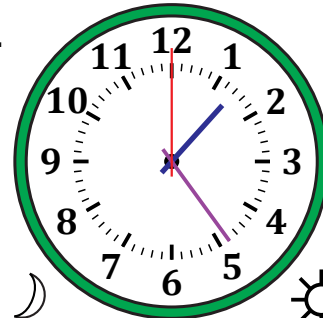


Nom: _____

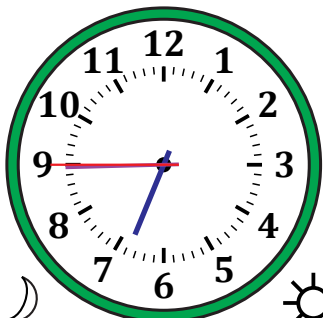

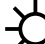
Date: _____

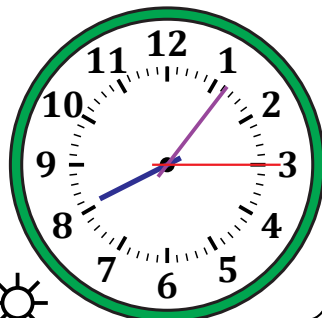
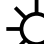

Placer les aiguilles de l'horloge pour qu'elles montrent le temps indiqué.

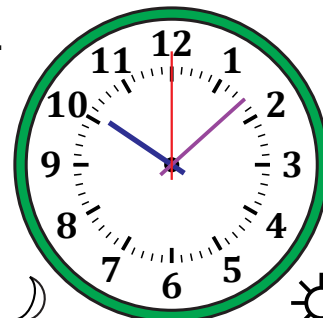


1. 
 Minuit  3:25:30 AM  Midi

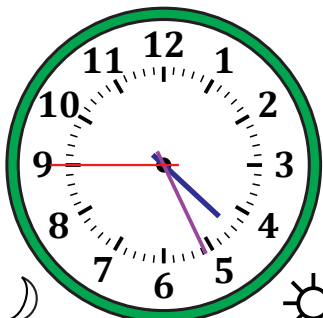

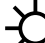
2. 
 Midi  7:26:30 PM  Minuit

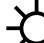
3. 
 Minuit  1:24:00 AM  Midi

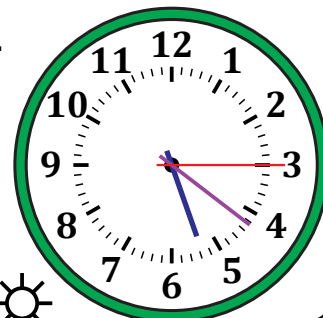


4. 
 Minuit  6:44:45 AM  Midi

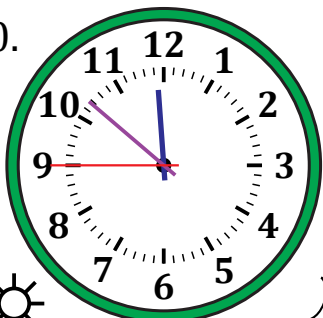


5. 
 Midi  8:06:15 PM  Minuit

6. 
 Minuit  10:08:00 AM  Midi

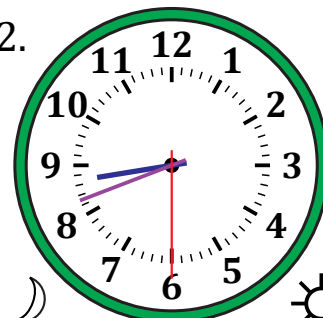


7. 
 Minuit  4:25:45 AM  Midi

8. 
 Midi  12:02:15 PM  Minuit

9. 
 Midi  5:21:15 PM  Minuit

10. 
 Midi  11:51:45 PM  Minuit

11. 
 Midi  2:08:00 PM  Minuit

12. 
 Minuit  8:41:30 AM  Midi