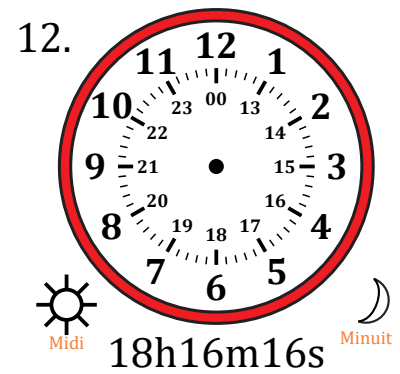
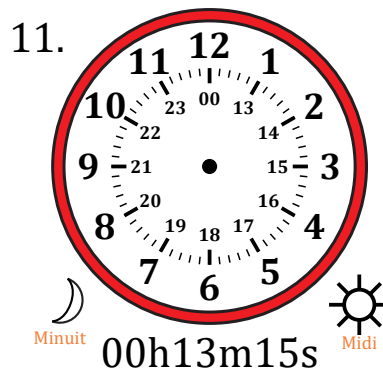
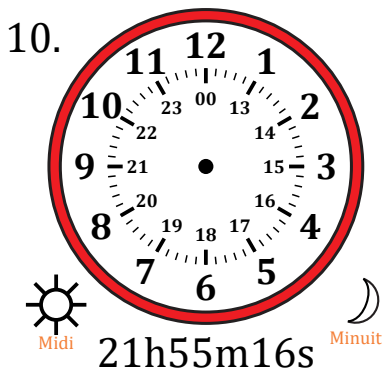
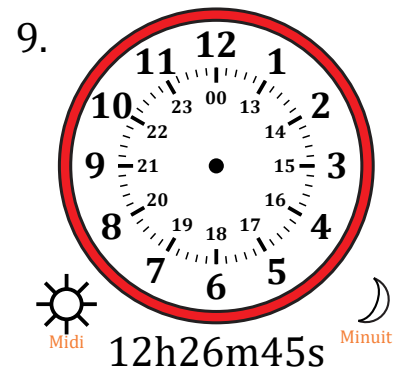
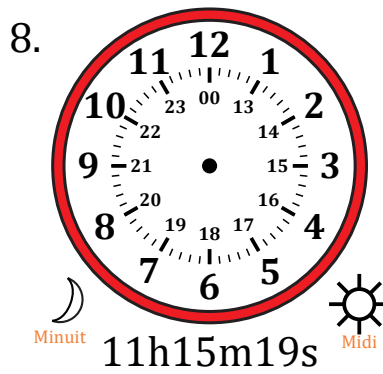
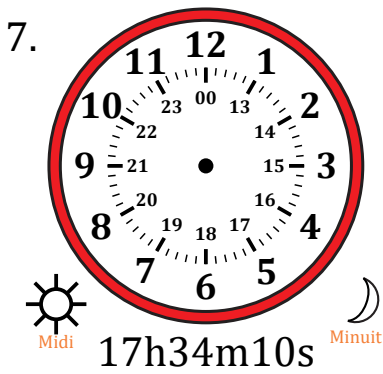
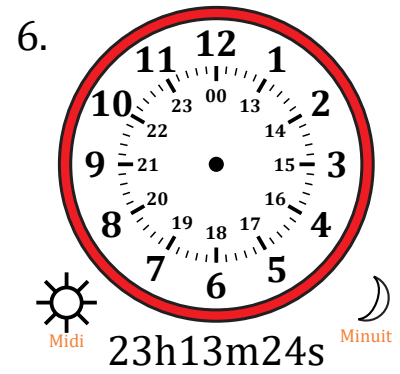
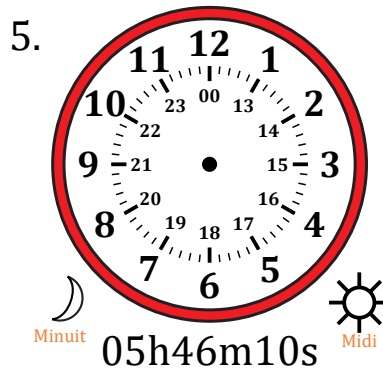
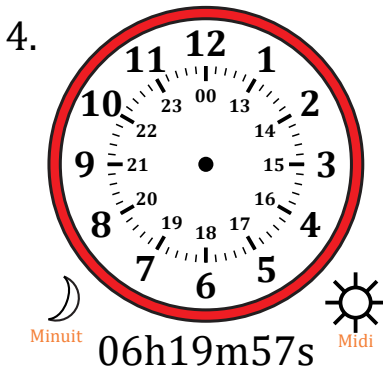
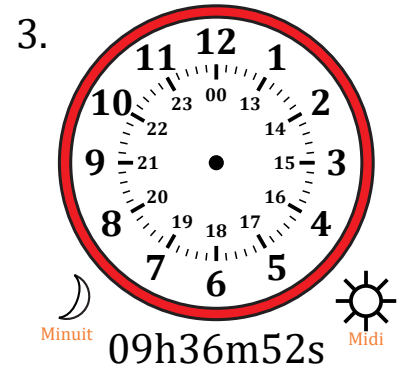
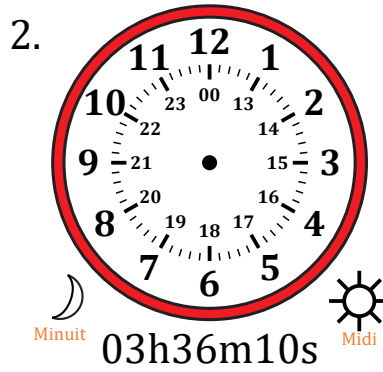
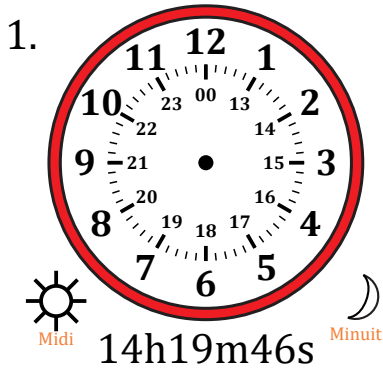


Place d'Aiguilles sur Une Horloge Analogique (G)

Nom: _____

Date: _____

Placer les aiguilles de l'horloge pour qu'elles montrent le temps indiqué.

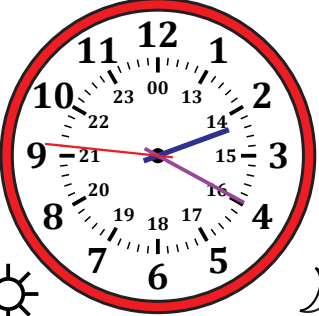


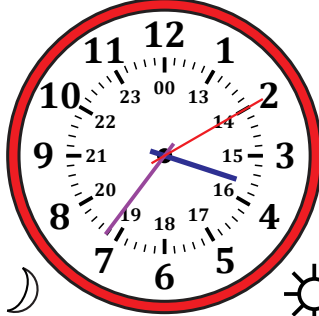
Place d'Aiguilles sur Une Horloge Analogique (G) Solutions

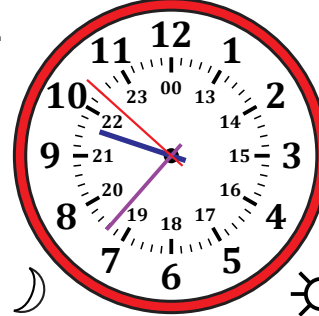
Nom: _____

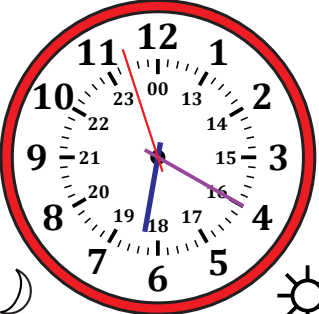
Date: _____

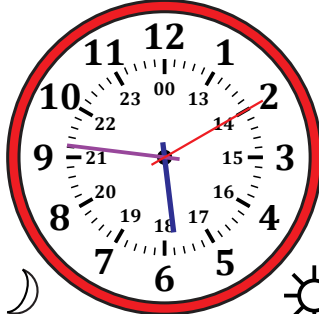
Placer les aiguilles de l'horloge pour qu'elles montrent le temps indiqué.

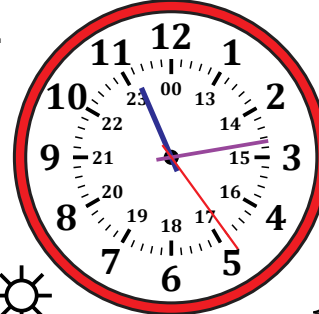
1. 
 Midi Minuit
14h19m46s

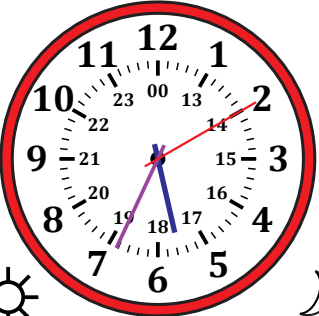
2. 
 Minuit Midi
03h36m10s

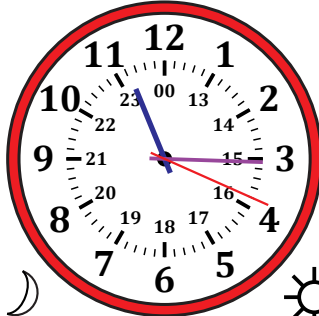
3. 
 Minuit Midi
09h36m52s

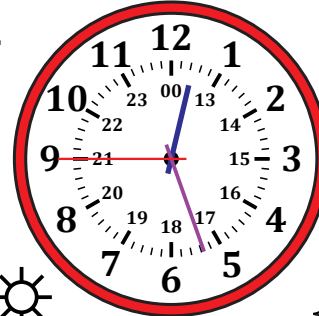
4. 
 Minuit Midi
06h19m57s

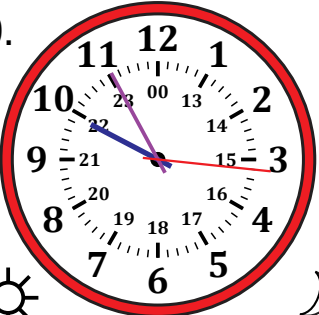
5. 
 Minuit Midi
05h46m10s

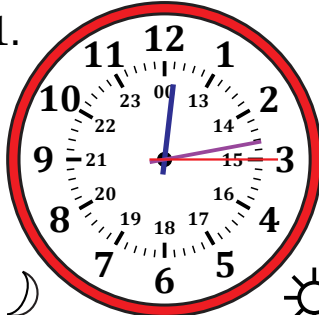
6. 
 Midi Minuit
23h13m24s

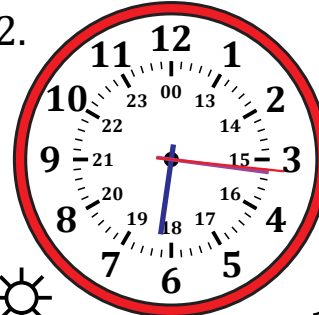
7. 
 Midi Minuit
17h34m10s

8. 
 Minuit Midi
11h15m19s

9. 
 Midi Minuit
12h26m45s

10. 
 Midi Minuit
21h55m16s

11. 
 Minuit Midi
00h13m15s

12. 
 Midi Minuit
18h16m16s