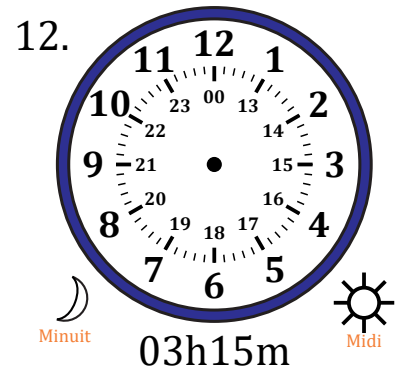
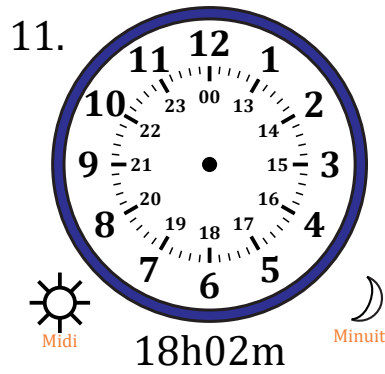
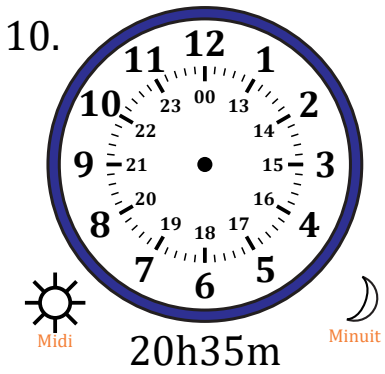
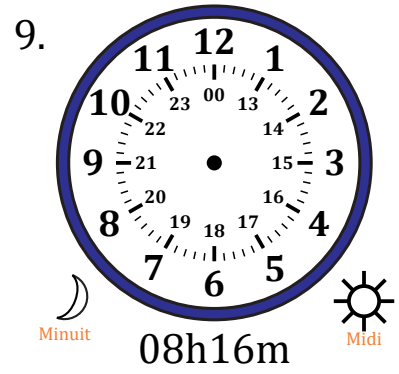
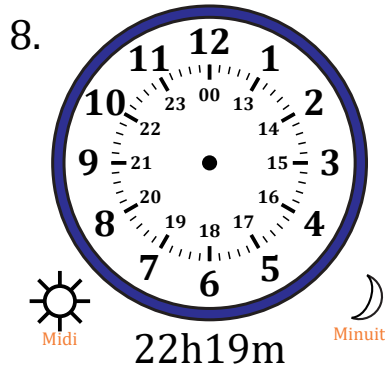
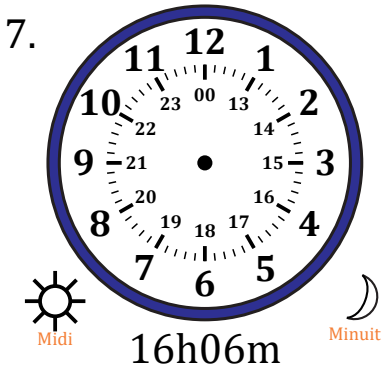
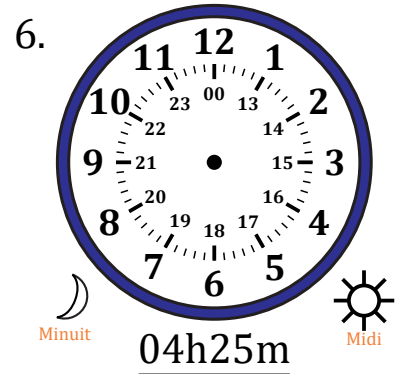
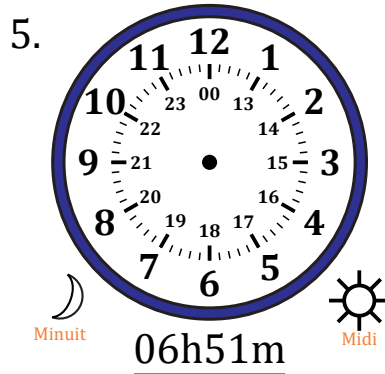
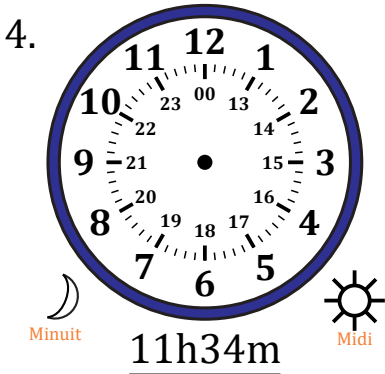
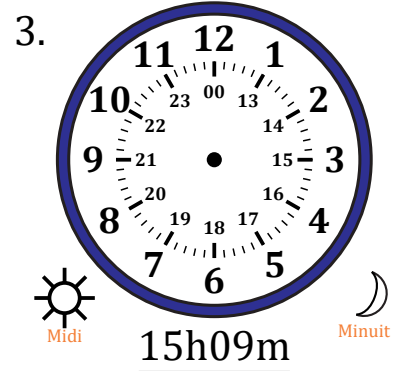
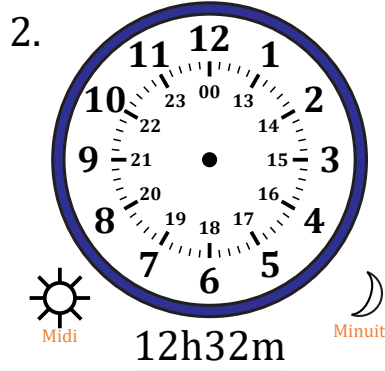
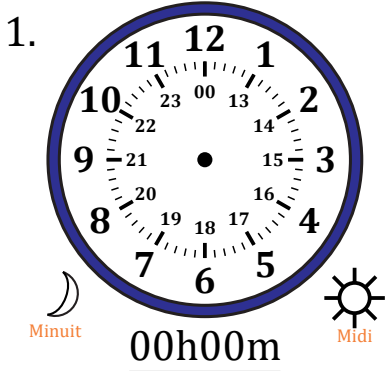


# Place d'Aiguilles sur Une Horloge Analogique (I)

Nom: \_\_\_\_\_

Date: \_\_\_\_\_

Placer les aiguilles de l'horloge pour qu'elles montrent le temps indiqué.



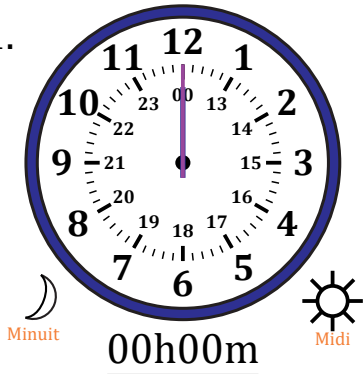
# Place d'Aiguilles sur Une Horloge Analogique (I) Solutions

Nom: \_\_\_\_\_

Date: \_\_\_\_\_

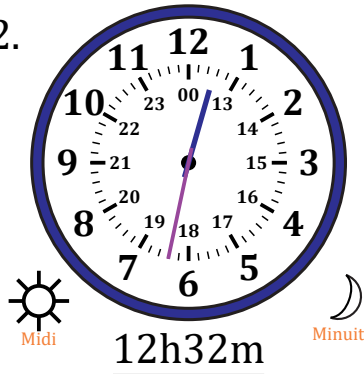
Placer les aiguilles de l'horloge pour qu'elles montrent le temps indiqué.

1.



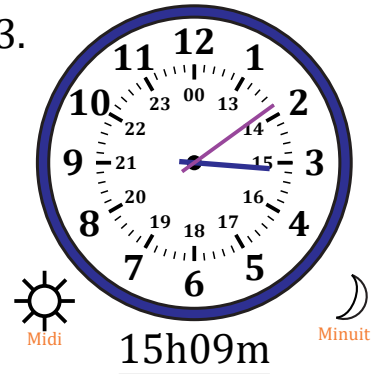
00h00m

2.



12h32m

3.



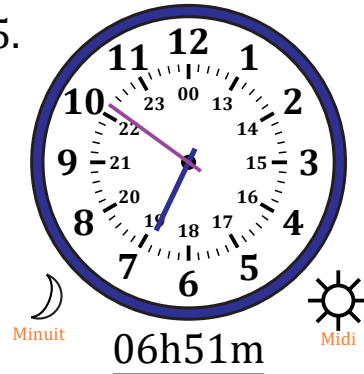
15h09m

4.



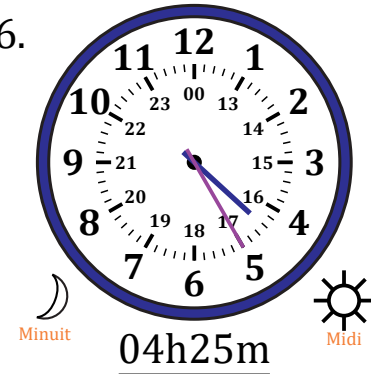
11h34m

5.



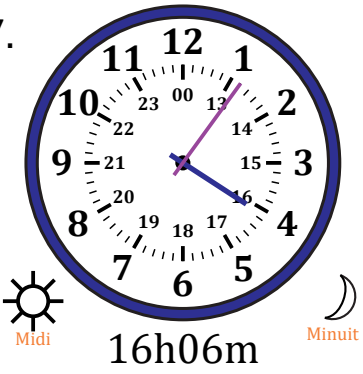
06h51m

6.



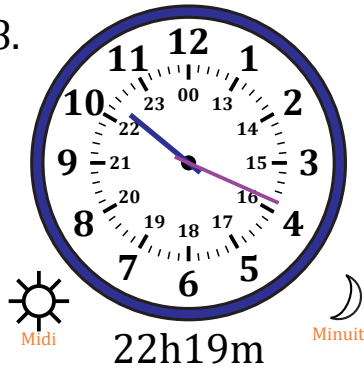
04h25m

7.



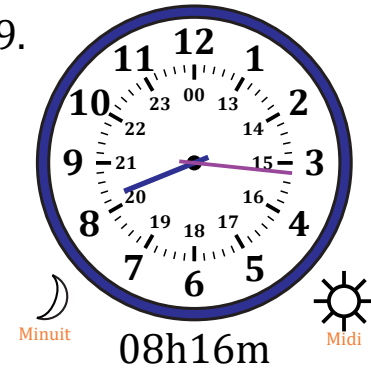
16h06m

8.



22h19m

9.



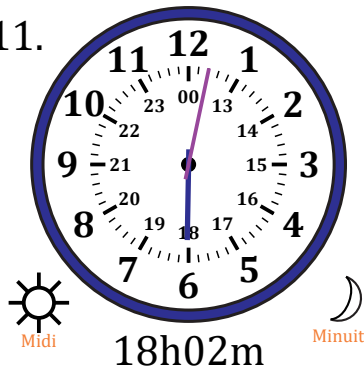
08h16m

10.



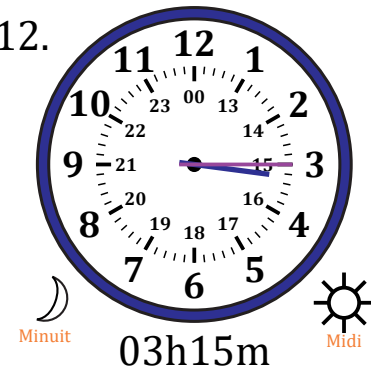
20h35m

11.



18h02m

12.



03h15m