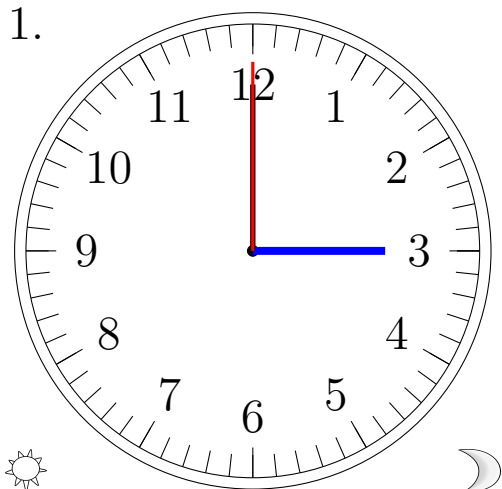


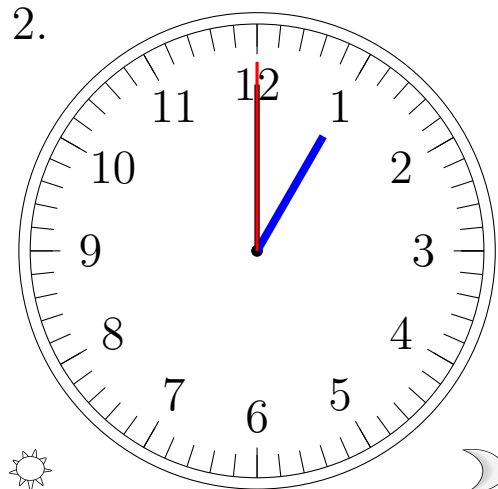
# Lecture d'une Horloge Analogique (A)

Lisez chaque heure et écrivez-la dans l'espace sous l'horloge.

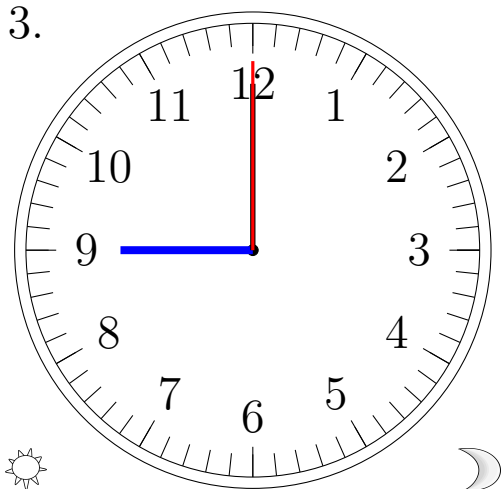
1.



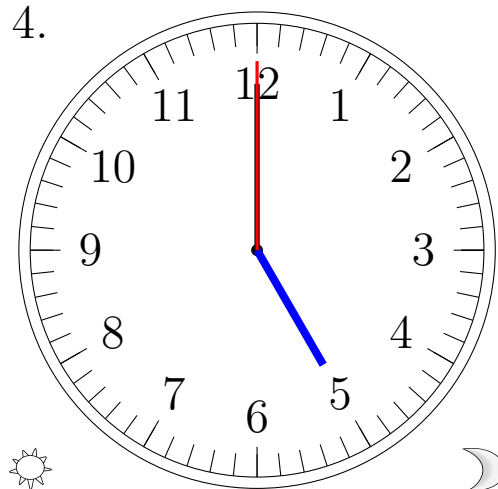
2.



3.



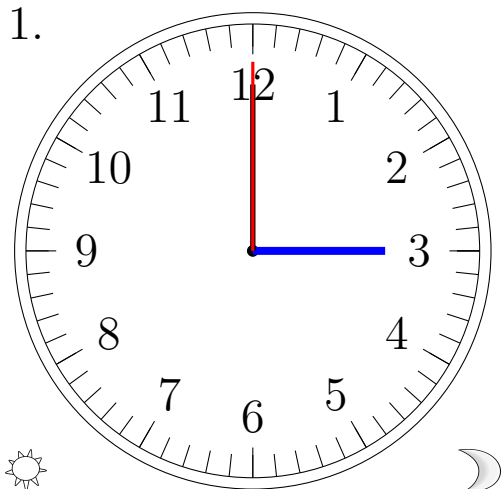
4.



# Lecture d'une Horloge Analogique (A) Solutions

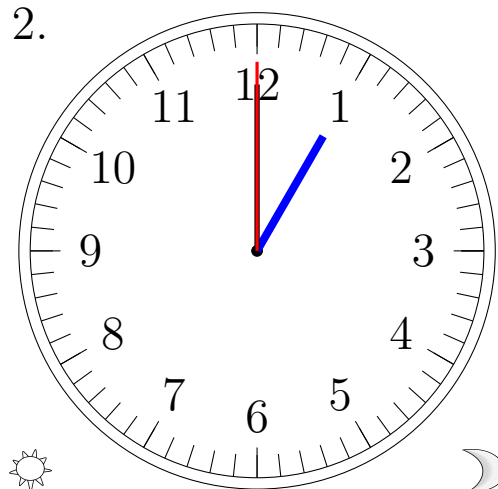
Lisez chaque heure et écrivez-la dans l'espace sous l'horloge.

1.



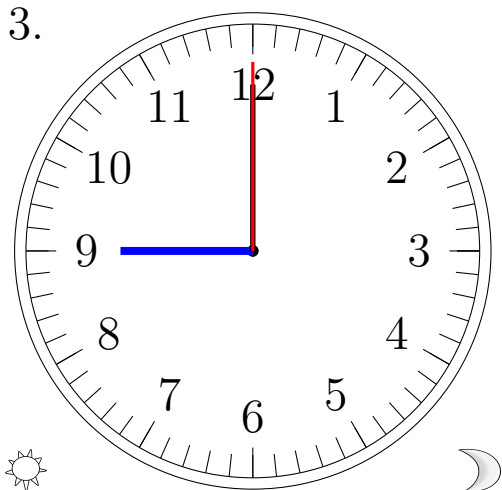
3:00:00 PM

2.



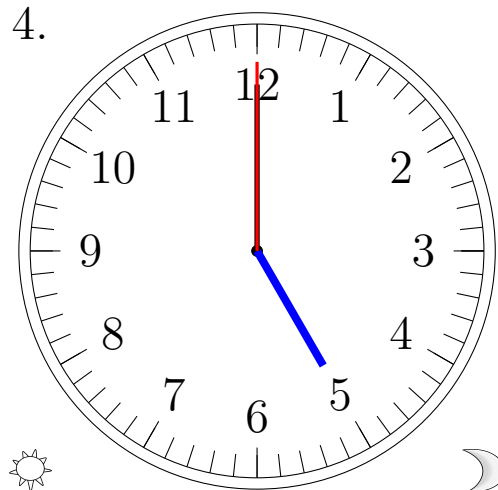
1:00:00 PM

3.



9:00:00 PM

4.



5:00:00 PM