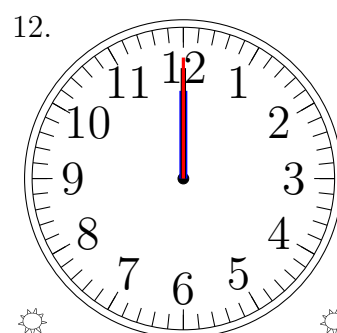
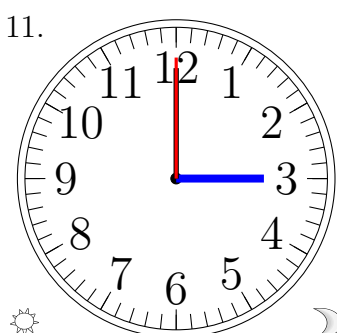
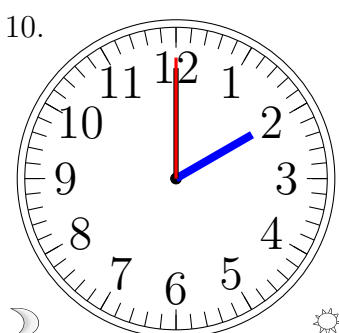
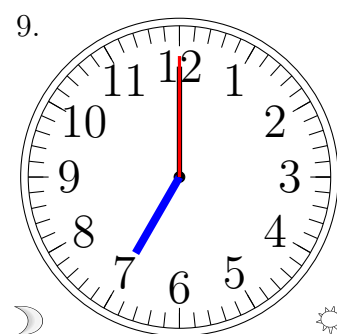
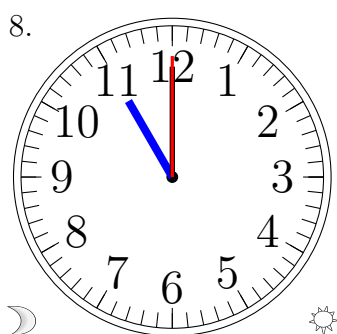
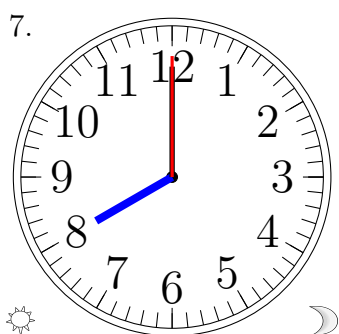
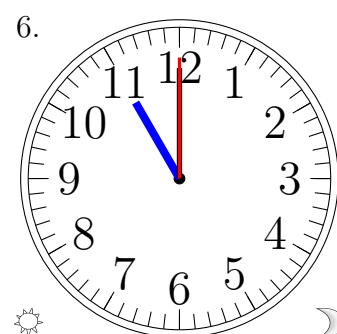
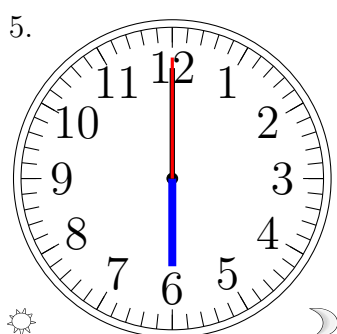
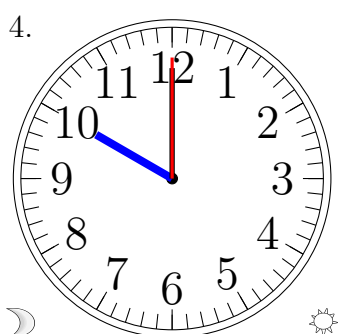
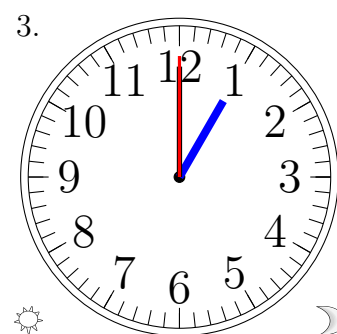
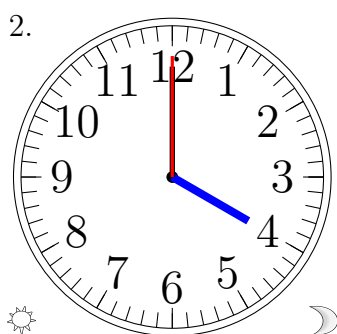
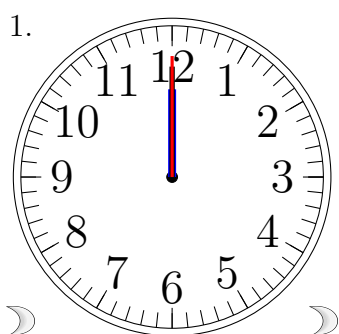


Lecture d'une Horloge Analogique (I)

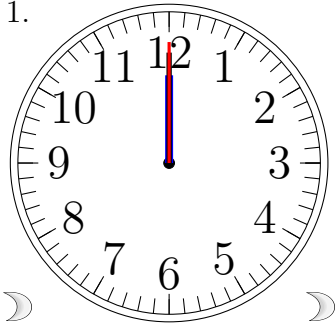
Lisez chaque heure et écrivez-la dans l'espace sous l'horloge.



Lecture d'une Horloge Analogique (I) Solutions

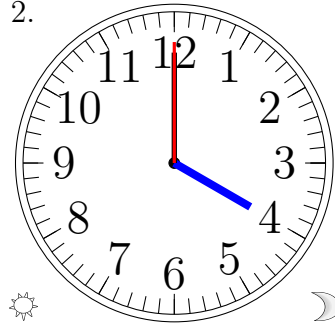
Lisez chaque heure et écrivez-la dans l'espace sous l'horloge.

1.



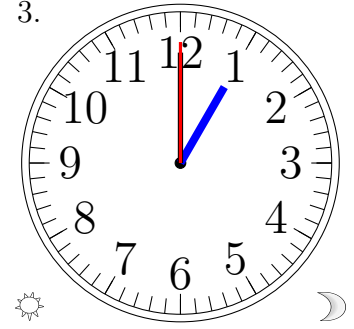
12:00:00 AM

2.



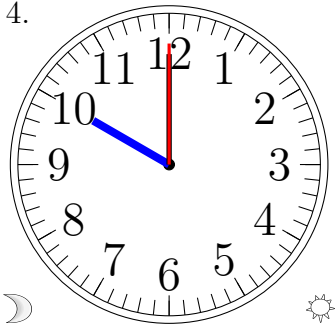
4:00:00 PM

3.



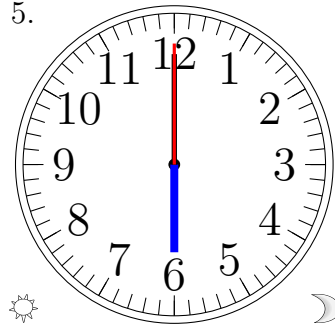
1:00:00 PM

4.



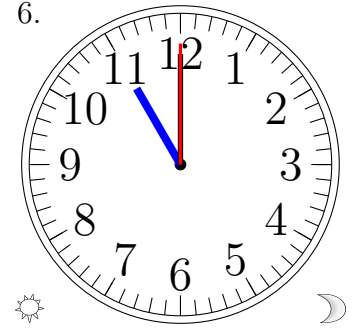
10:00:00 AM

5.



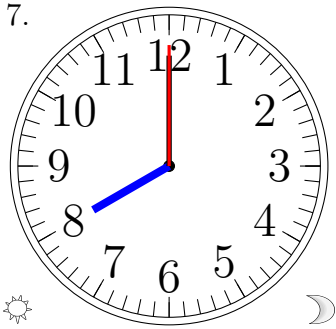
6:00:00 PM

6.



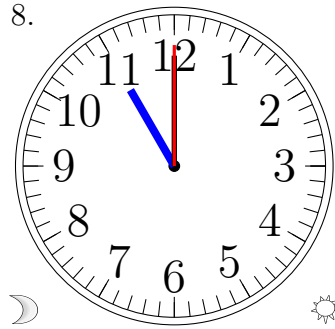
11:00:00 PM

7.



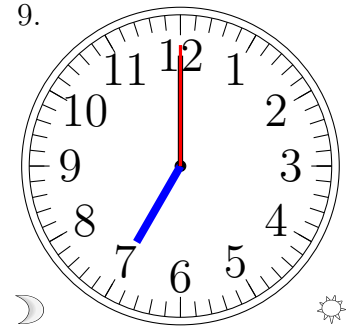
8:00:00 PM

8.



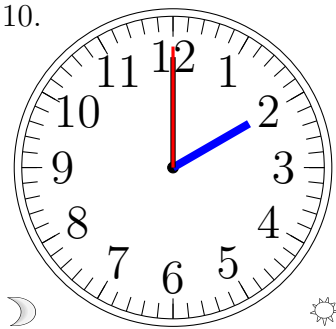
11:00:00 AM

9.



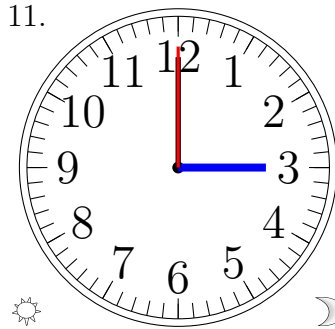
7:00:00 AM

10.



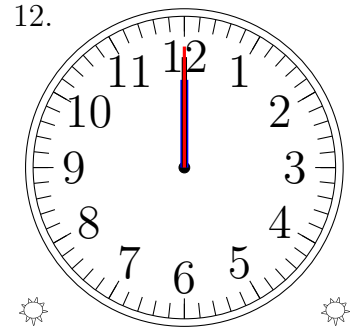
2:00:00 AM

11.



3:00:00 PM

12.



12:00:00 PM