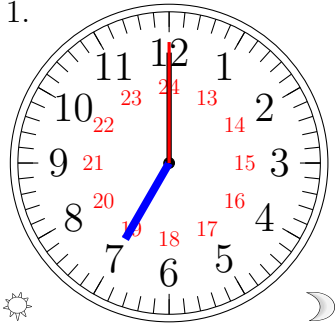


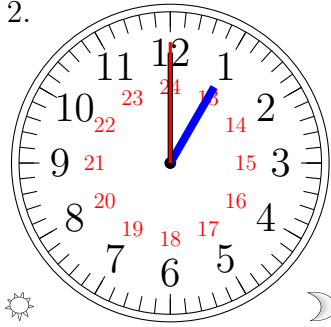
Lecture d'une Horloge Analogique (A)

Lisez chaque heure et écrivez-la dans l'espace sous l'horloge.

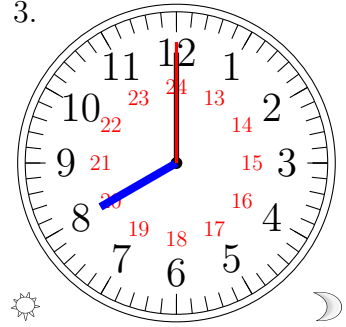
1.



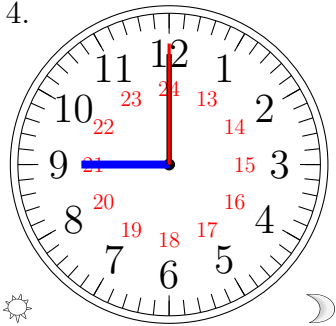
2.



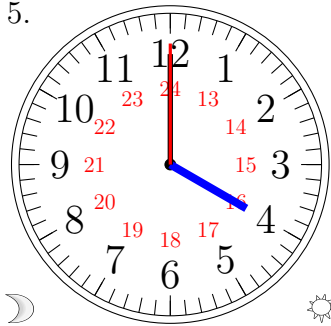
3.



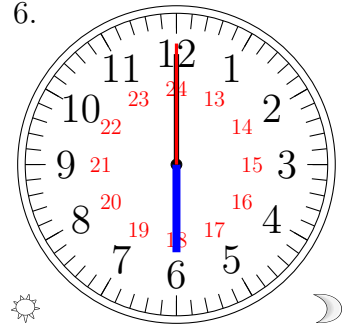
4.



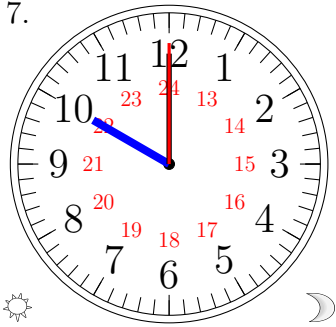
5.



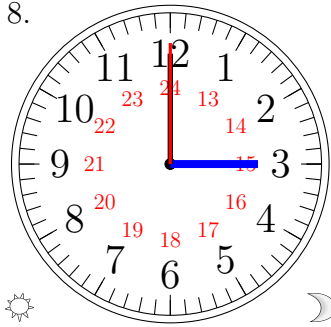
6.



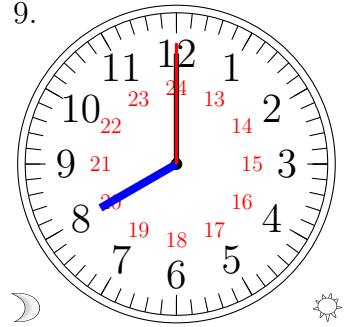
7.



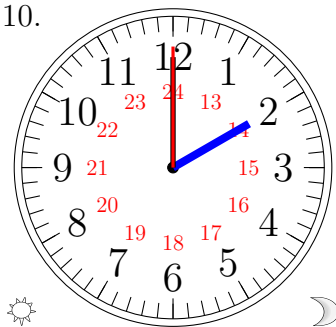
8.



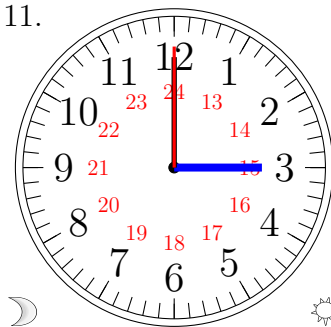
9.



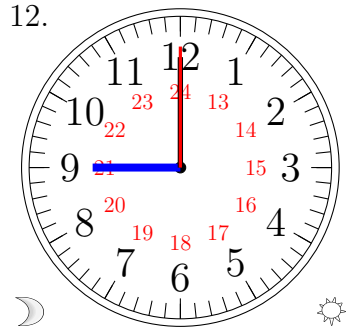
10.



11.

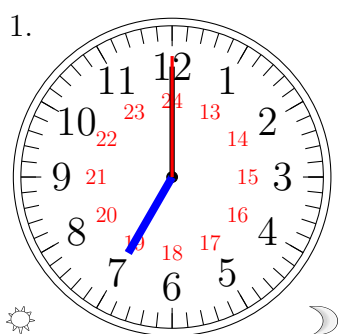


12.

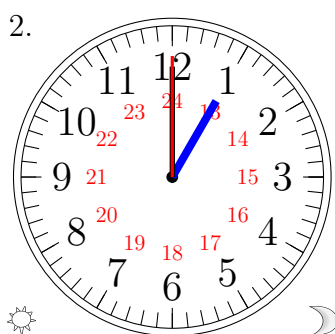


Lecture d'une Horloge Analogique (A) Solutions

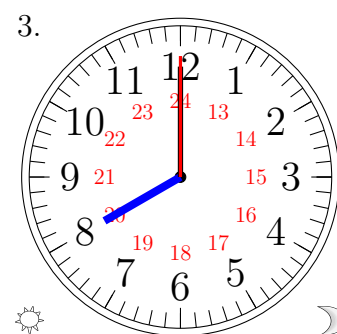
Lisez chaque heure et écrivez-la dans l'espace sous l'horloge.



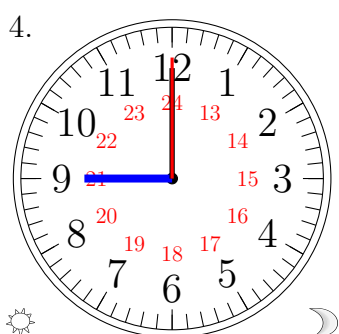
19:00:00



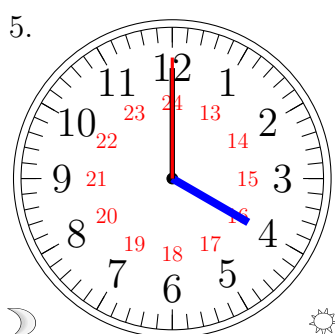
13:00:00



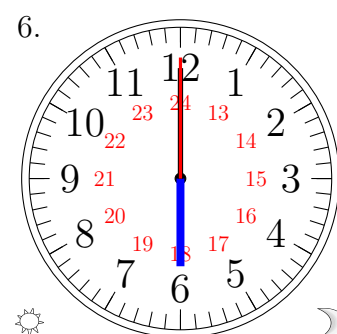
20:00:00



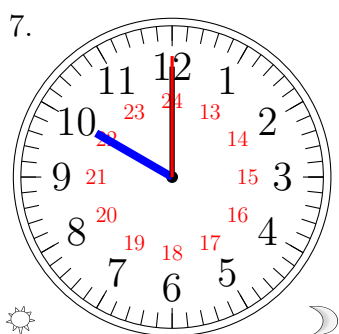
21:00:00



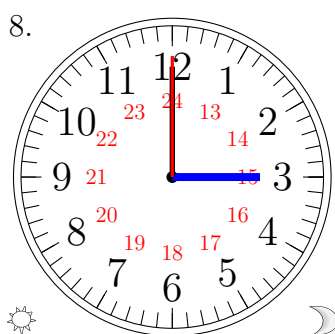
04:00:00



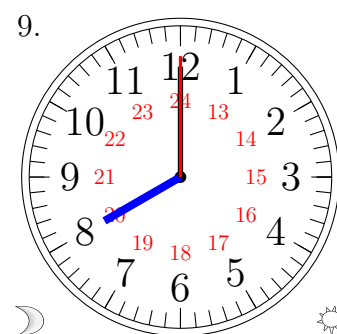
18:00:00



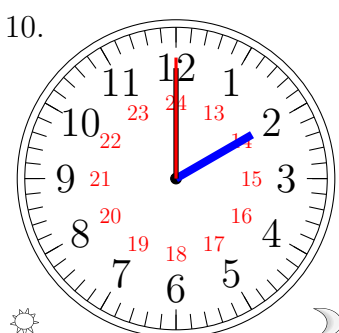
22:00:00



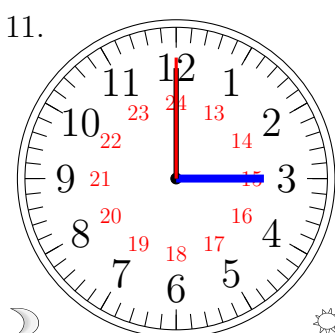
15:00:00



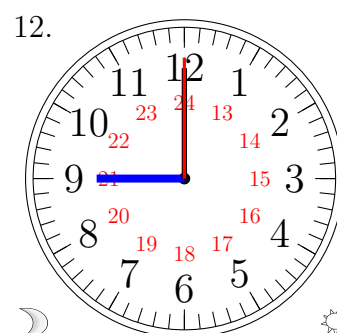
08:00:00



14:00:00



03:00:00



09:00:00