

Dessin d'Aiguilles d'une Horloge Analogique (D)

Dessinez les aiguilles des horloges.



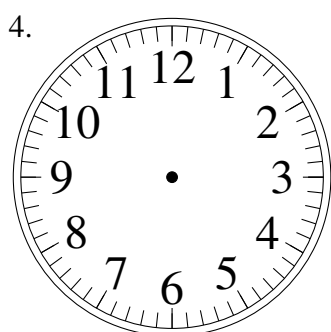
3:05:00



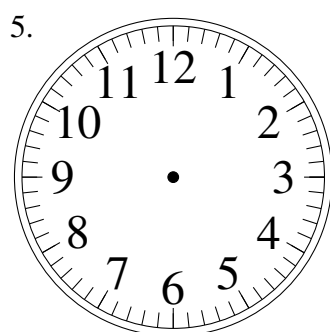
2:20:00



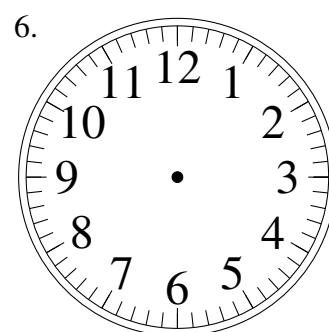
6:44:00



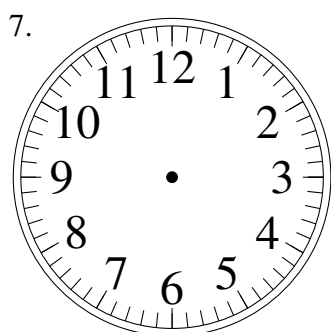
10:12:00



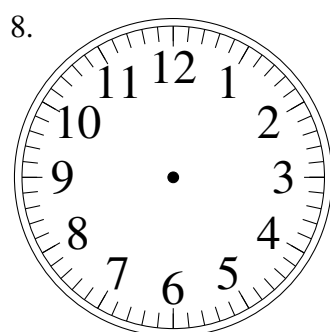
3:31:00



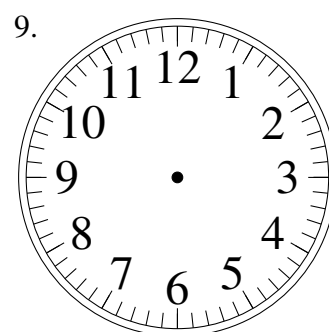
10:14:00



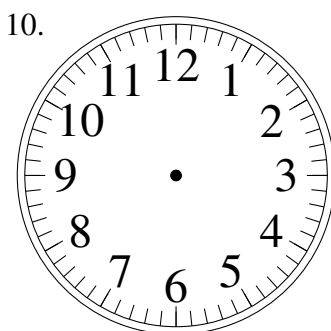
4:07:00



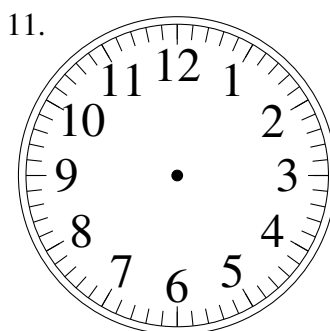
7:28:00



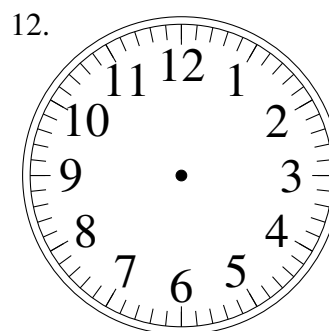
3:11:00



8:46:00



4:21:00

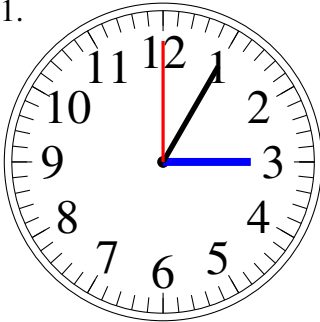


8:51:00

Dessin d'Aiguilles d'une Horloge Analogique (D) Solutions

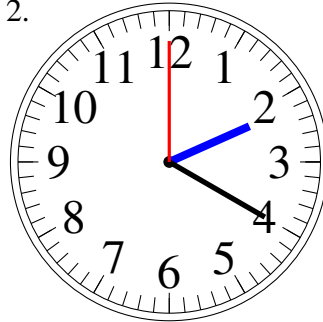
Dessinez les aiguilles des horloges.

1.



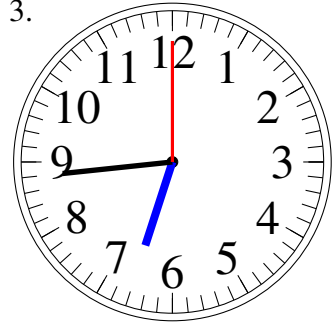
3:05:00

2.



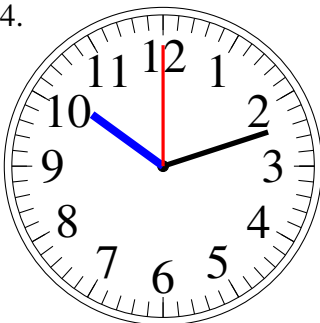
2:20:00

3.



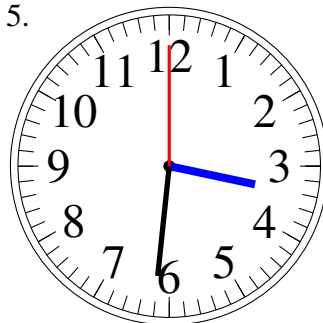
6:44:00

4.



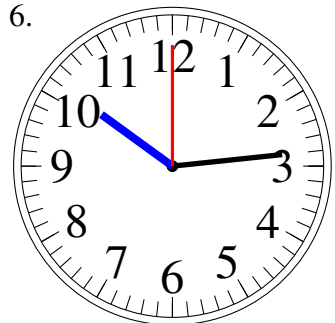
10:12:00

5.



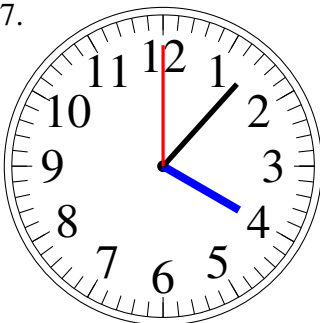
3:31:00

6.



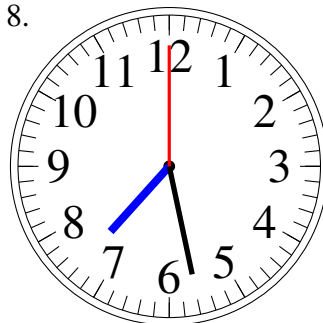
10:14:00

7.



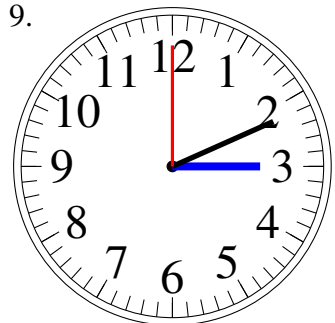
4:07:00

8.



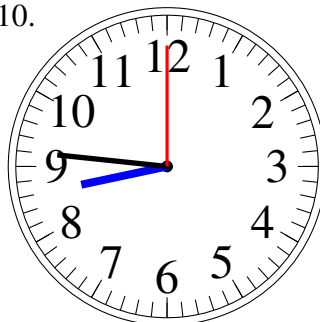
7:28:00

9.



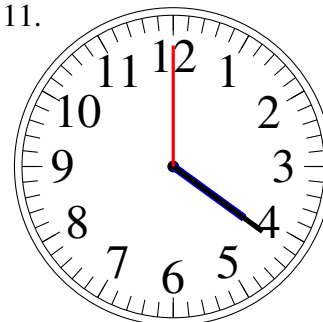
3:11:00

10.



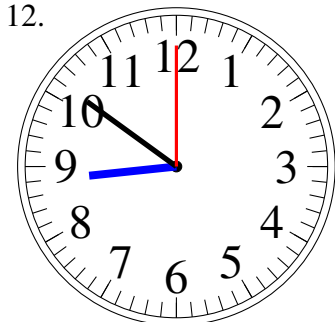
8:46:00

11.



4:21:00

12.



8:51:00