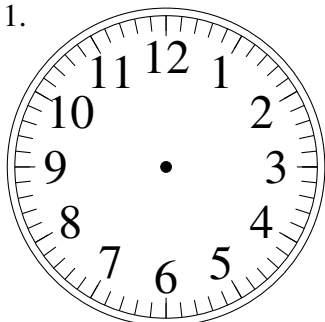


Dessin d'Aiguilles d'une Horloge Analogique (G)

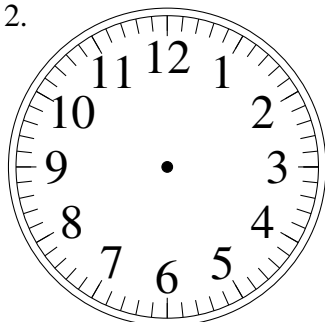
Dessinez les aiguilles des horloges.

1.



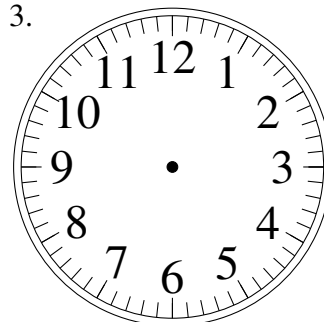
1:28:15

2.



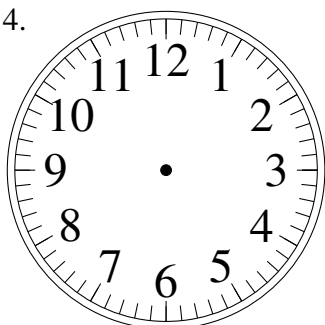
2:44:15

3.



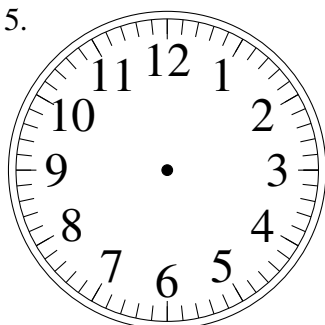
4:24:45

4.



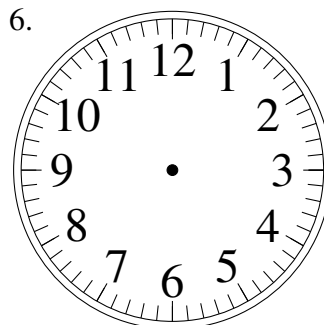
11:53:45

5.



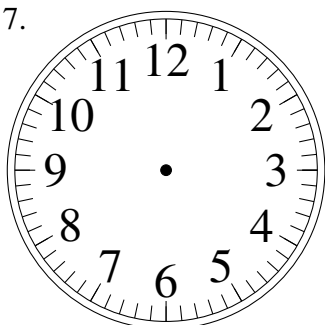
7:48:45

6.



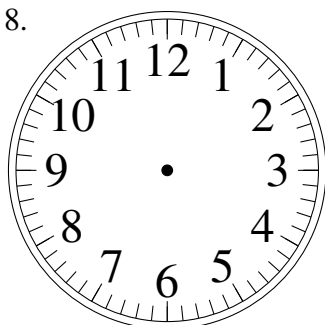
12:04:15

7.



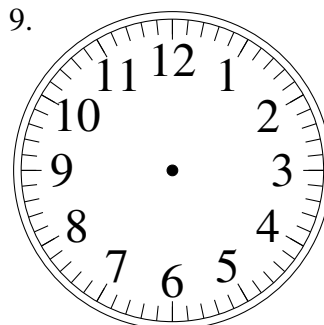
2:36:15

8.



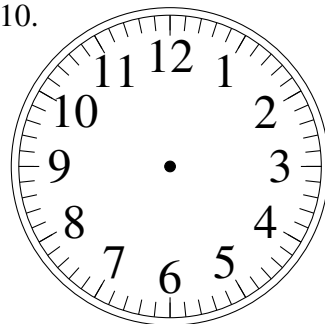
4:40:15

9.



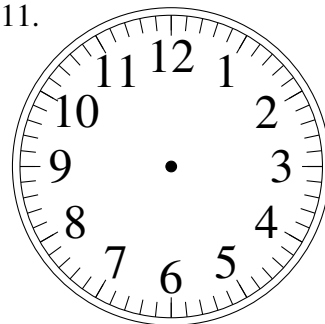
12:45:45

10.



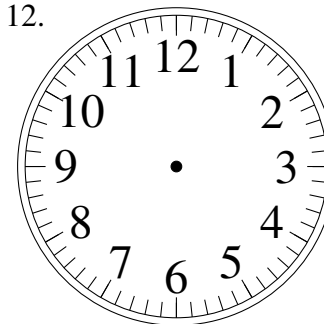
10:51:45

11.



4:31:00

12.

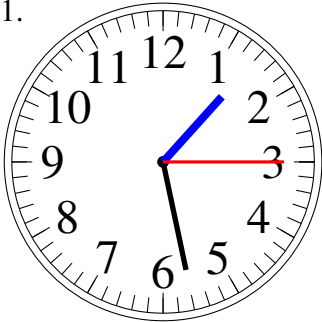


4:03:30

Dessin d'Aiguilles d'une Horloge Analogique (G) Solutions

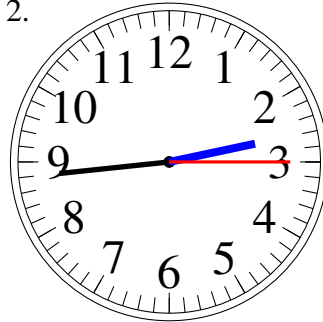
Dessinez les aiguilles des horloges.

1.



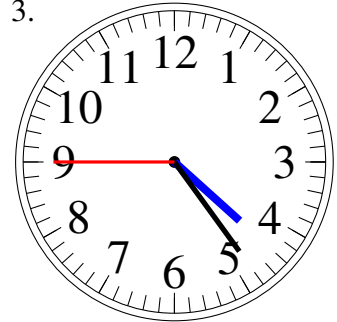
1:28:15

2.



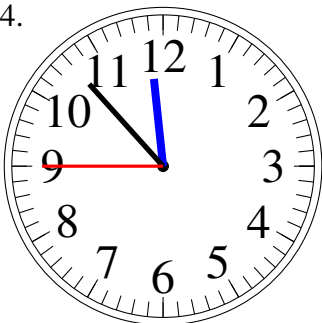
2:44:15

3.



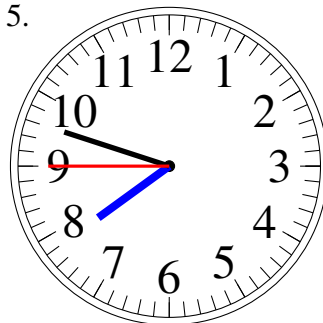
4:24:45

4.



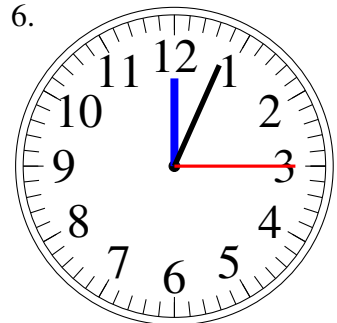
11:53:45

5.



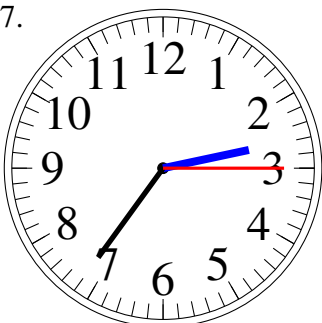
7:48:45

6.



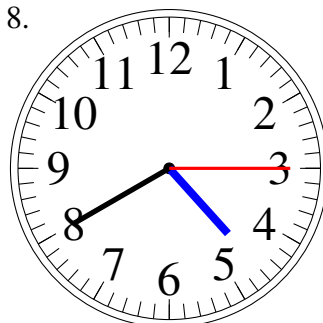
12:04:15

7.



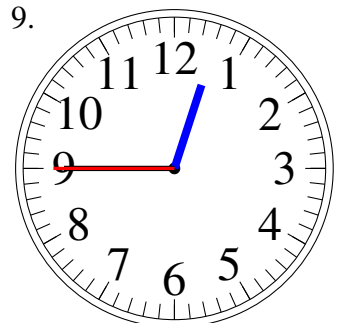
2:36:15

8.



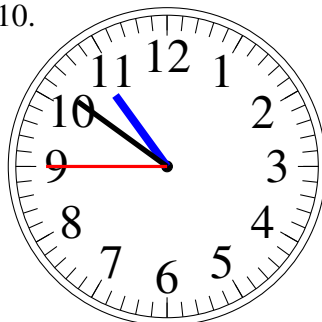
4:40:15

9.



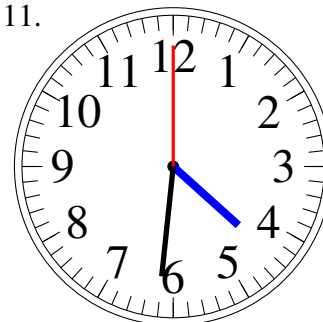
12:45:45

10.



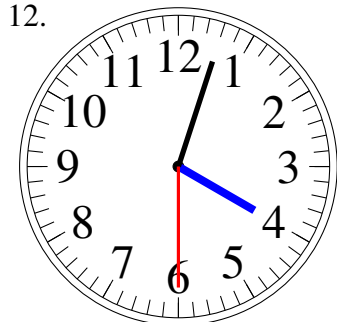
10:51:45

11.



4:31:00

12.



4:03:30