

# Dessin d'Aiguilles d'une Horloge Analogique (D)

Dessinez les aiguilles des horloges.



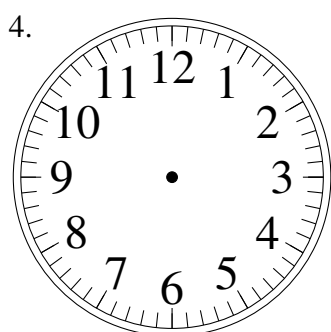
4:05:45



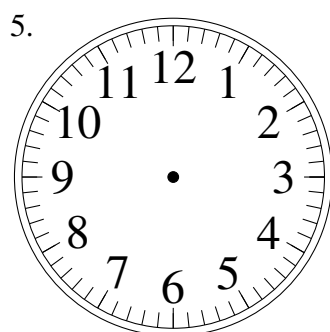
2:14:30



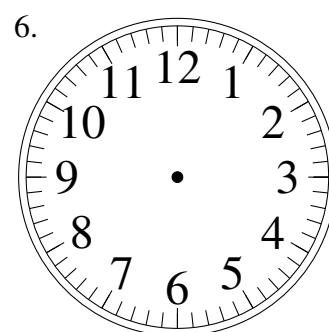
7:43:00



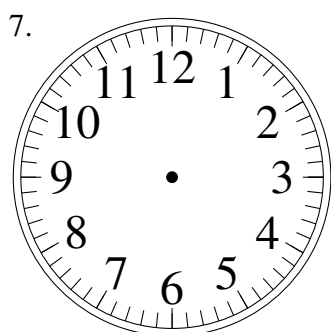
11:04:45



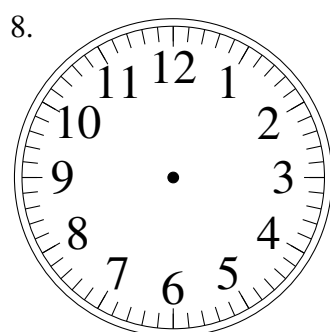
9:40:00



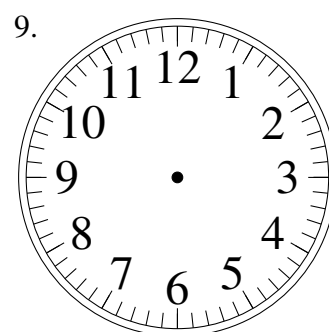
6:48:15



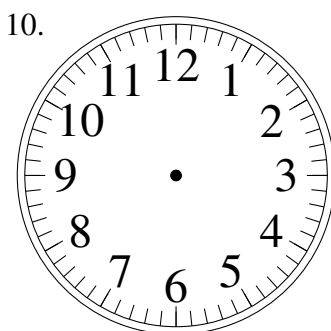
3:12:30



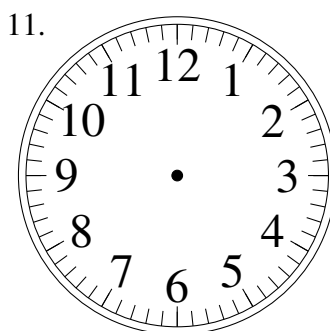
1:32:30



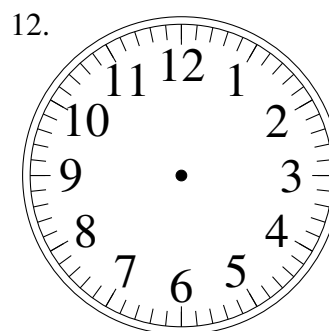
5:47:45



11:42:15



5:36:30

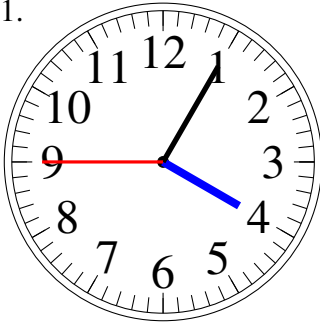


10:53:15

# Dessin d'Aiguilles d'une Horloge Analogique (D) Solutions

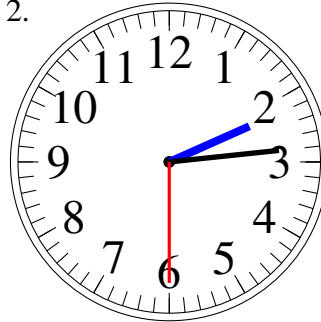
Dessinez les aiguilles des horloges.

1.



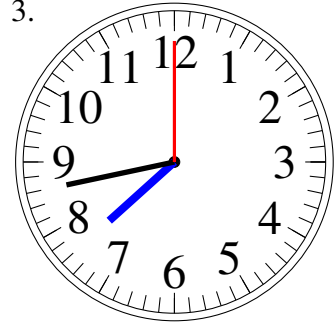
4:05:45

2.



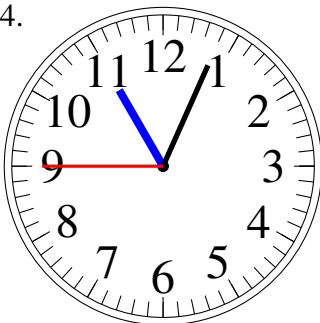
2:14:30

3.



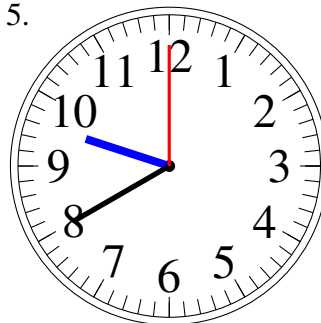
7:43:00

4.



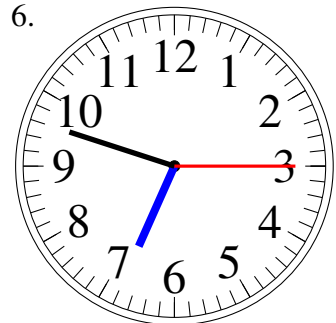
11:04:45

5.



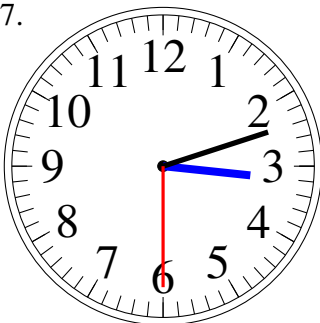
9:40:00

6.



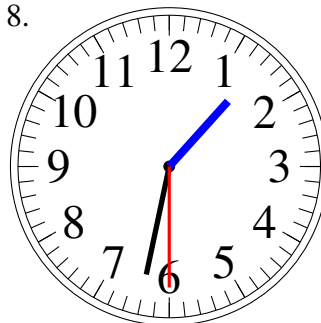
6:48:15

7.



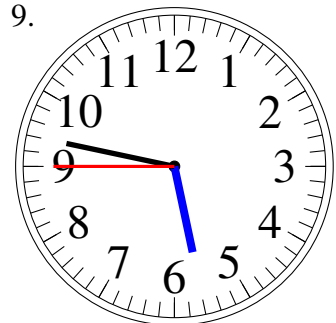
3:12:30

8.



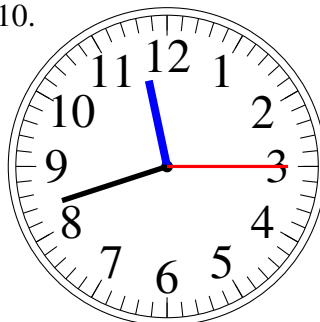
1:32:30

9.



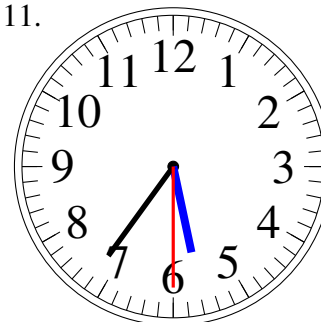
5:47:45

10.



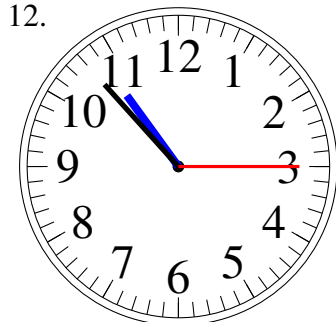
11:42:15

11.



5:36:30

12.



10:53:15