

# Dessin d'Aiguilles d'une Horloge Analogique (H)

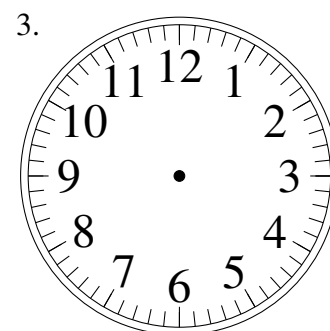
Dessinez les aiguilles des horloges.



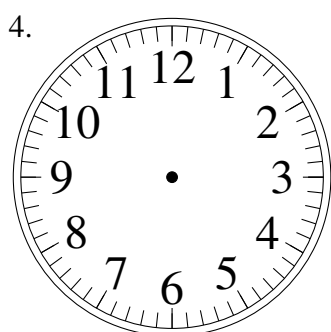
7:54:28



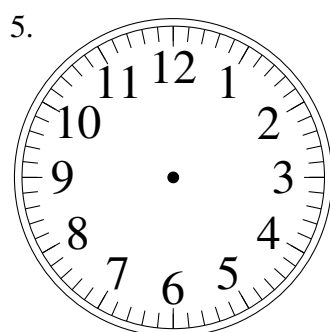
9:12:20



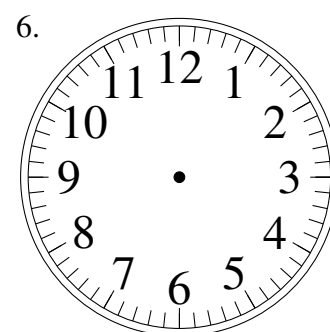
2:39:10



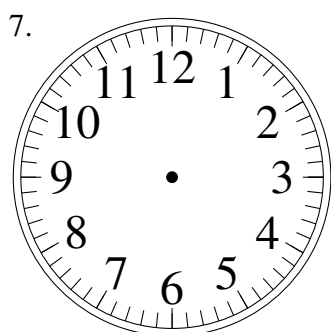
7:47:33



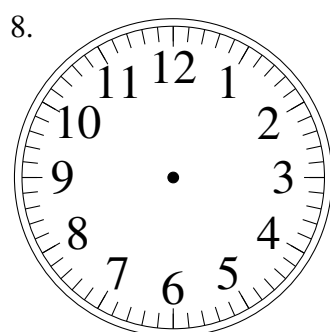
10:03:18



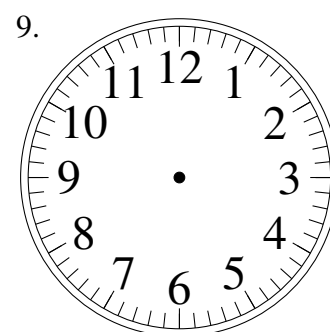
10:47:59



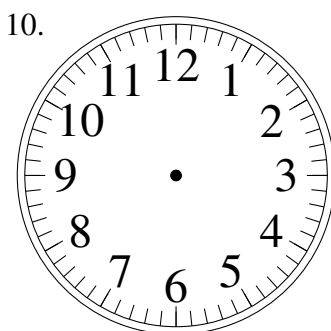
3:08:22



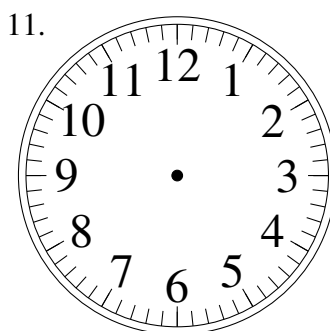
3:55:06



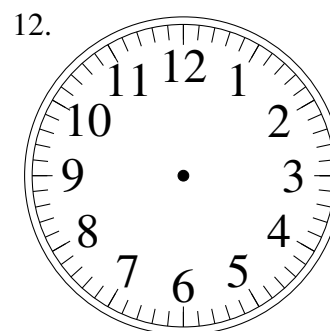
3:09:41



5:40:31



3:39:21

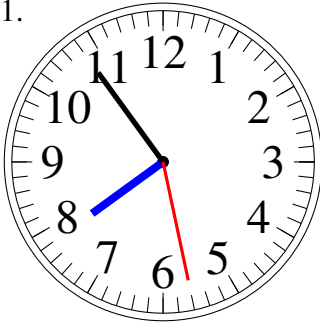


4:53:57

# Dessin d'Aiguilles d'une Horloge Analogique (H) Solutions

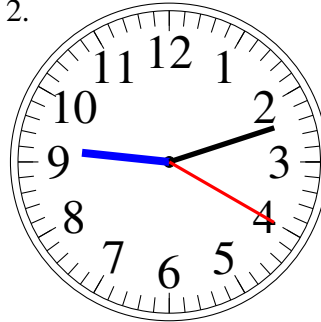
Dessinez les aiguilles des horloges.

1.



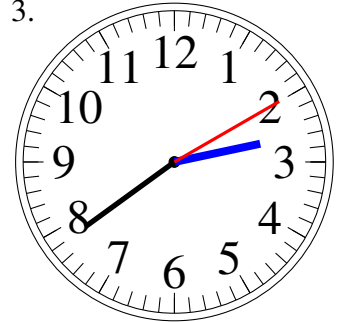
7:54:28

2.



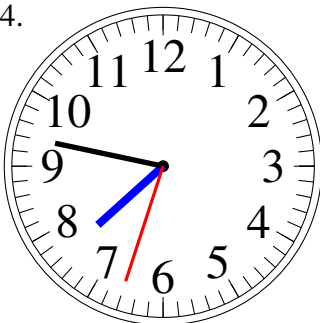
9:12:20

3.



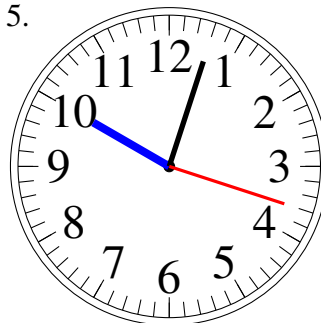
2:39:10

4.



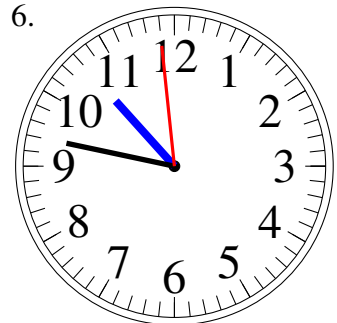
7:47:33

5.



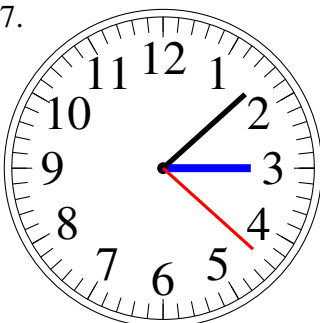
10:03:18

6.



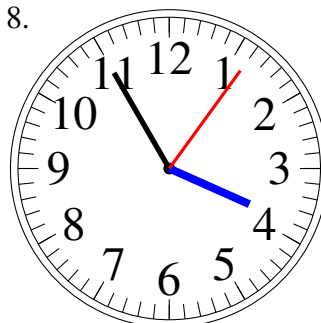
10:47:59

7.



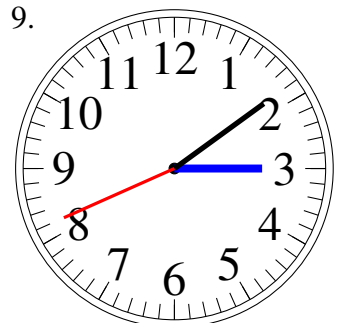
3:08:22

8.



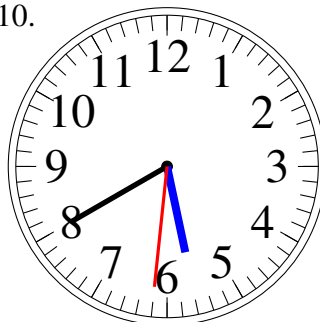
3:55:06

9.



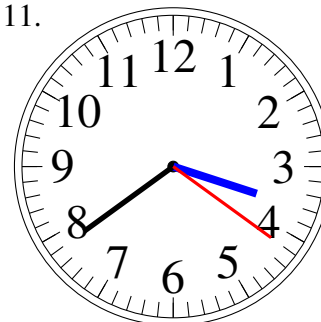
3:09:41

10.



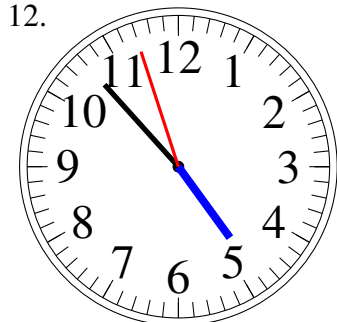
5:40:31

11.



3:39:21

12.



4:53:57