

Dessin d'Aiguilles d'une Horloge Analogique (E)

Dessinez les aiguilles des horloges.

1.



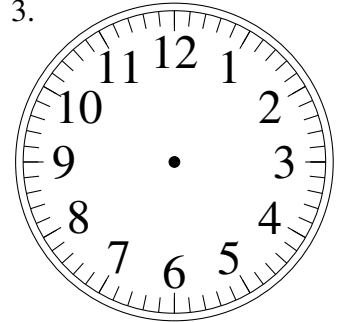
12:39:28

2.



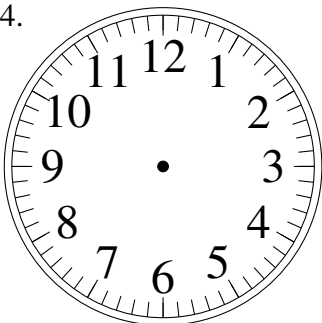
2:14:13

3.



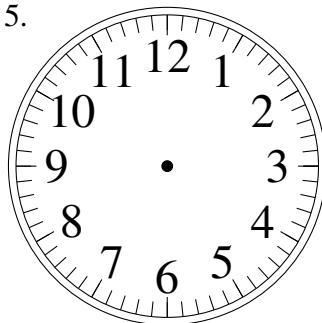
1:06:19

4.



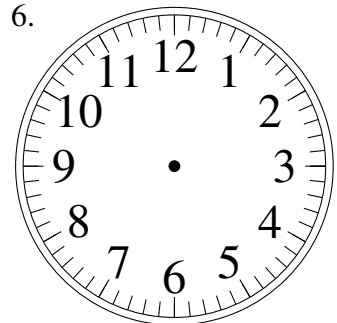
1:35:27

5.



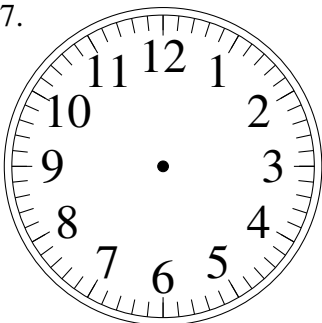
11:11:56

6.



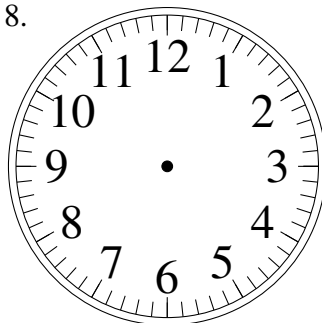
7:09:41

7.



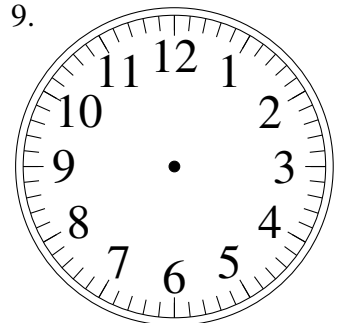
4:15:26

8.



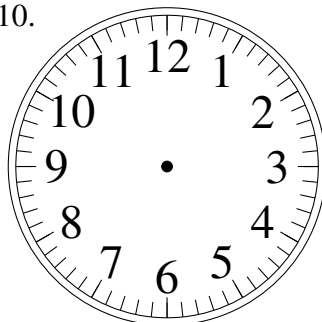
12:48:46

9.



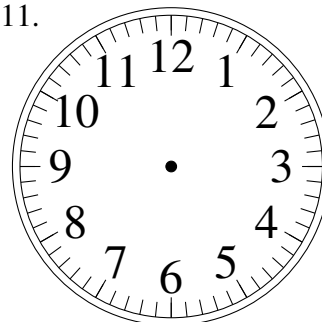
7:09:04

10.



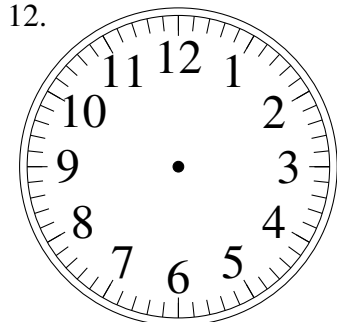
11:57:04

11.



11:55:35

12.

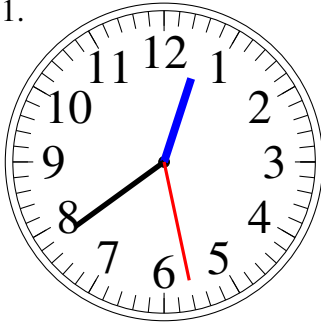


6:29:24

Dessin d'Aiguilles d'une Horloge Analogique (E) Solutions

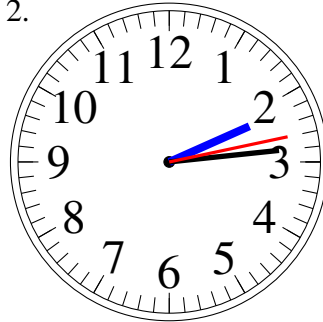
Dessinez les aiguilles des horloges.

1.



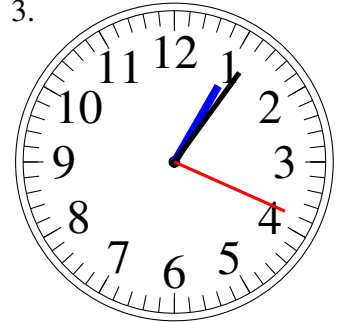
12:39:28

2.



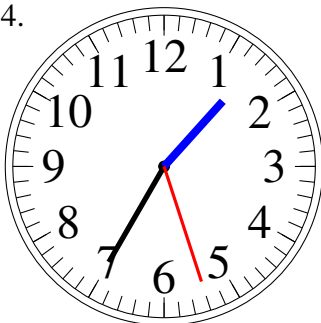
2:14:13

3.



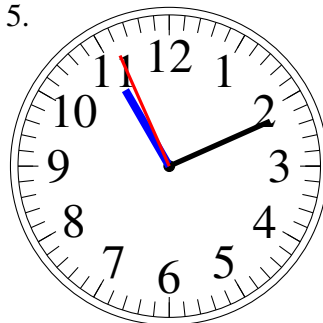
1:06:19

4.



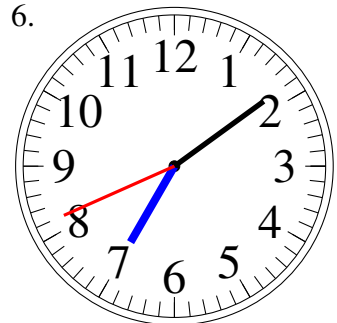
1:35:27

5.



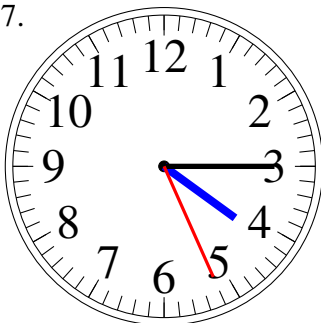
11:11:56

6.



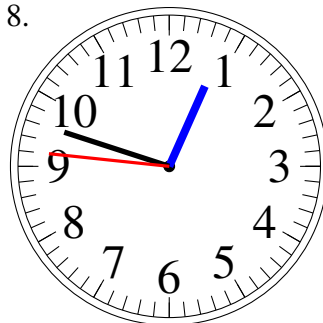
7:09:41

7.



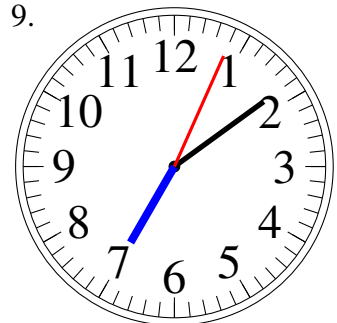
4:15:26

8.



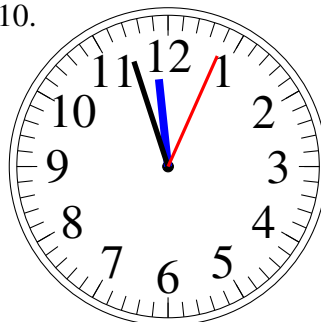
12:48:46

9.



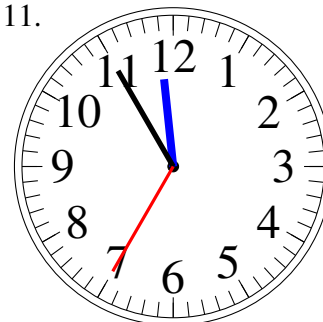
7:09:04

10.



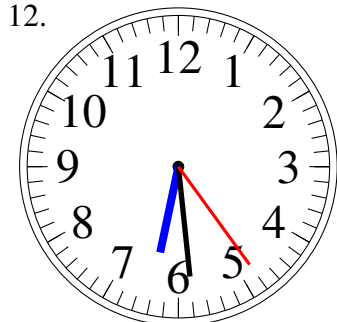
11:57:04

11.



11:55:35

12.



6:29:24