

# Dessin d'Aiguilles d'une Horloge Analogique (D)

Dessinez les aiguilles des horloges.



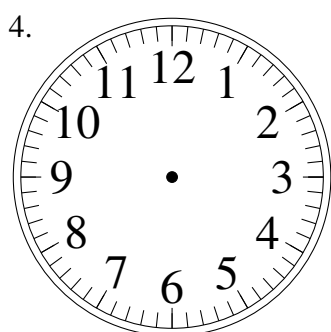
11:13:53



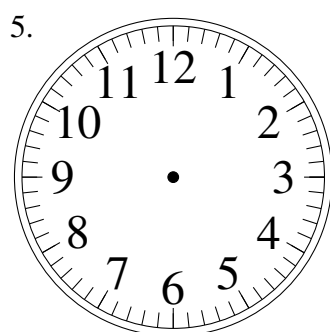
10:15:03



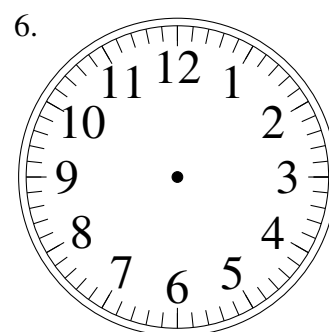
12:10:52



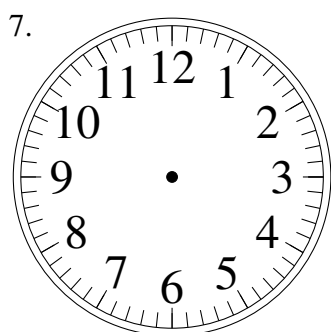
10:40:16



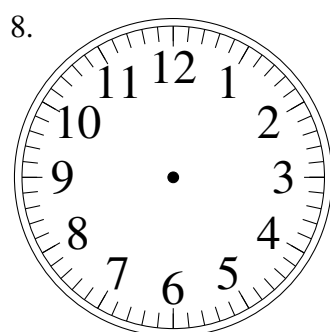
7:34:18



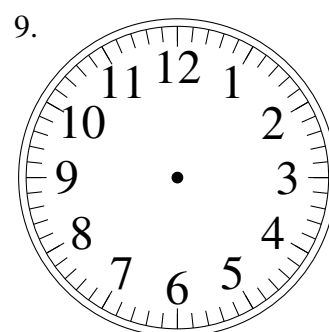
10:33:29



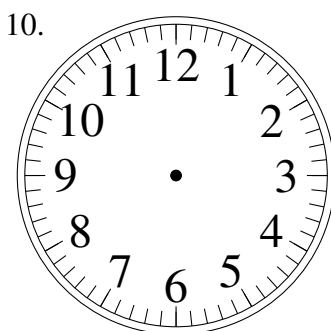
7:39:22



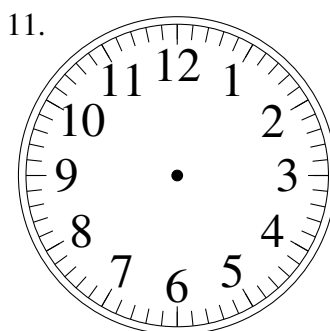
5:05:05



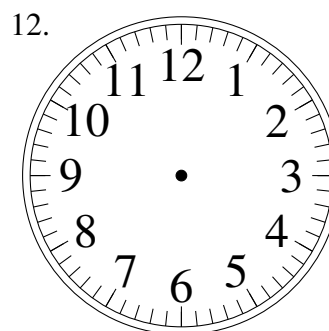
3:22:18



2:54:12



7:10:58

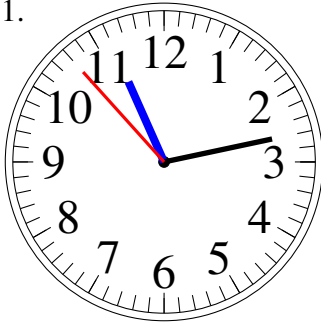


8:34:05

# Dessin d'Aiguilles d'une Horloge Analogique (D) Solutions

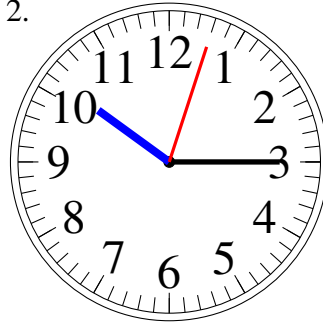
Dessinez les aiguilles des horloges.

1.



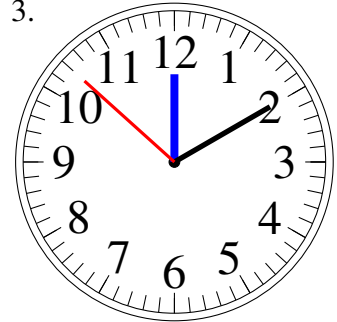
11:13:53

2.



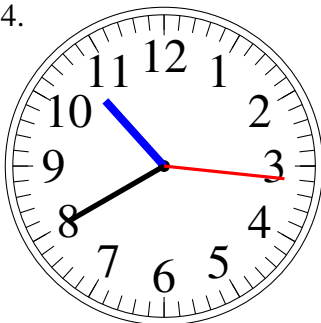
10:15:03

3.



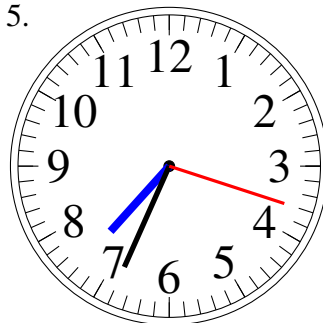
12:10:52

4.



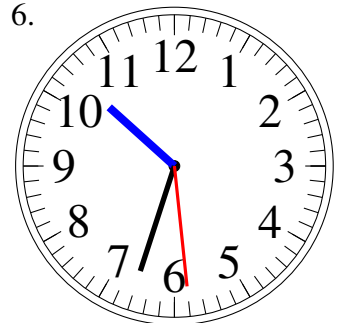
10:40:16

5.



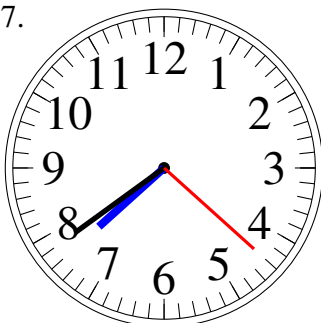
7:34:18

6.



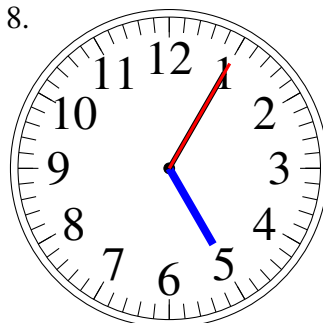
10:33:29

7.



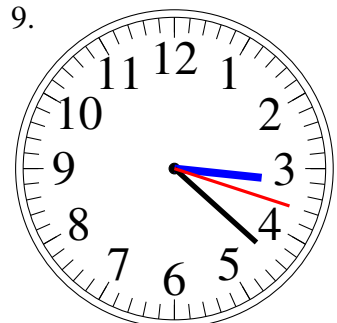
7:39:22

8.



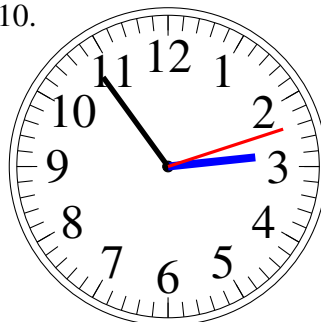
5:05:05

9.



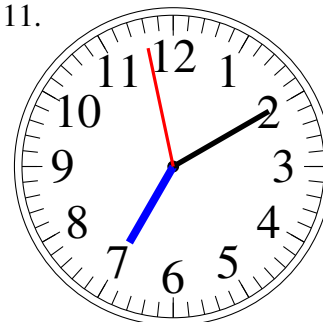
3:22:18

10.



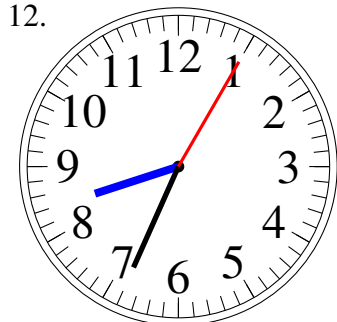
2:54:12

11.



7:10:58

12.



8:34:05