

Dessin d'Aiguilles d'une Horloge Analogique (E)

Dessinez les aiguilles des horloges.

1.



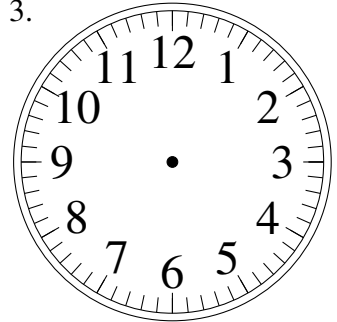
3:00

2.



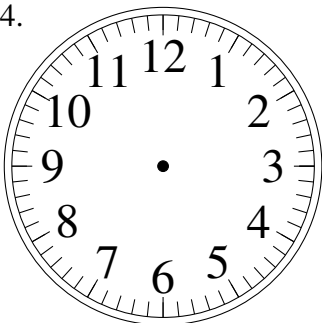
8:00

3.



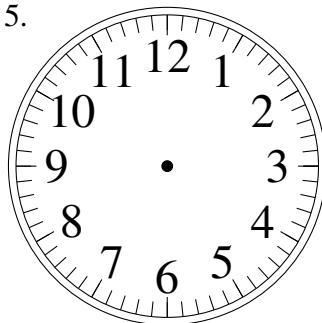
5:00

4.



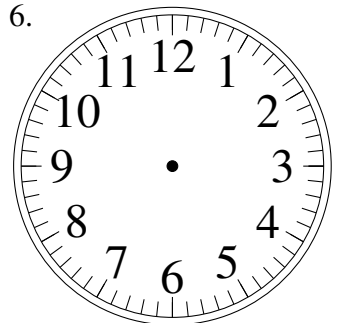
10:00

5.



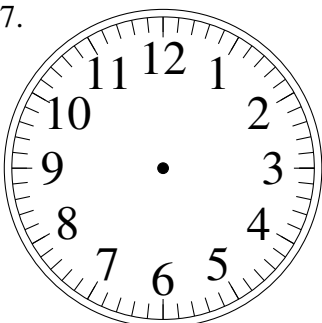
5:00

6.



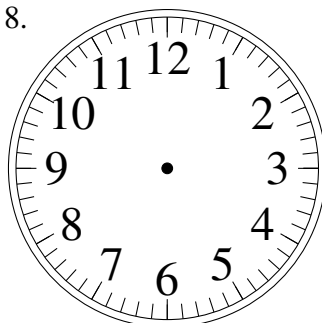
8:00

7.



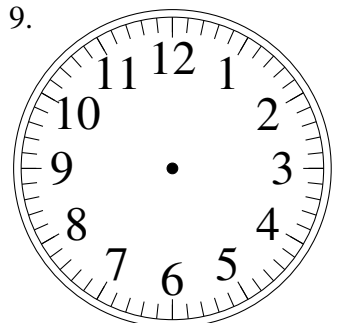
11:00

8.



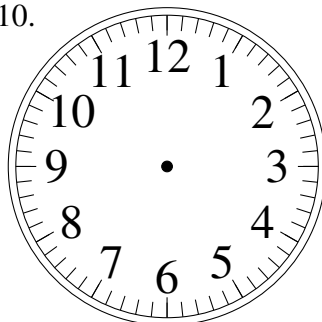
6:00

9.



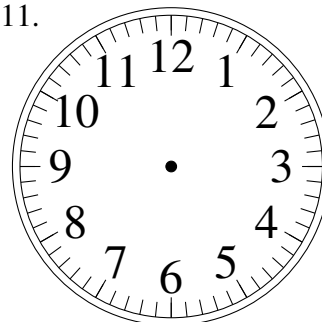
2:00

10.



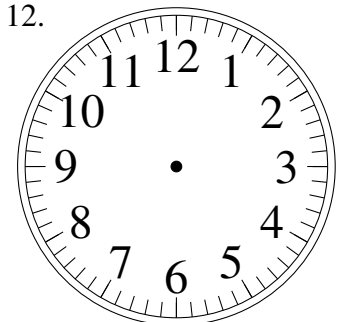
8:00

11.



12:00

12.

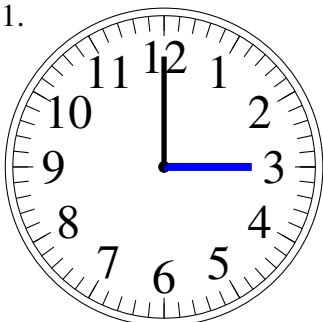


1:00

Dessin d'Aiguilles d'une Horloge Analogique (E) Solutions

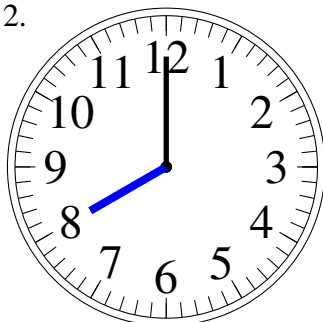
Dessinez les aiguilles des horloges.

1.



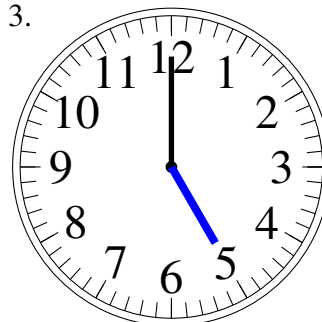
3:00

2.



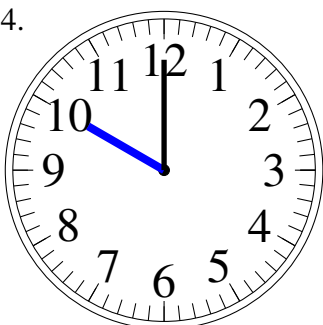
8:00

3.



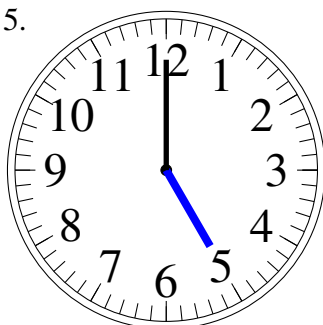
5:00

4.



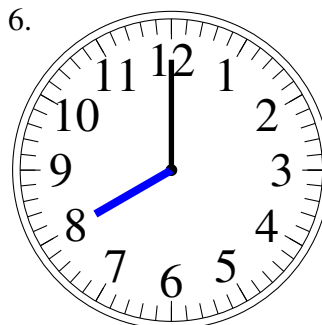
10:00

5.



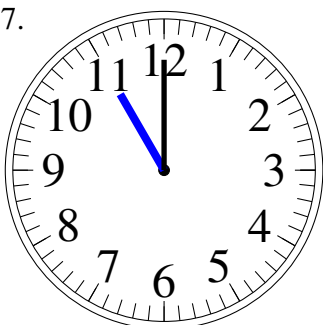
5:00

6.



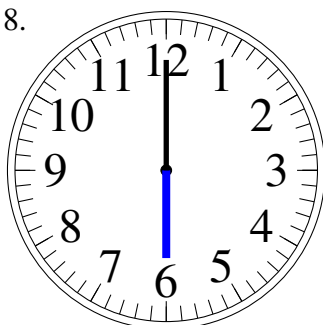
8:00

7.



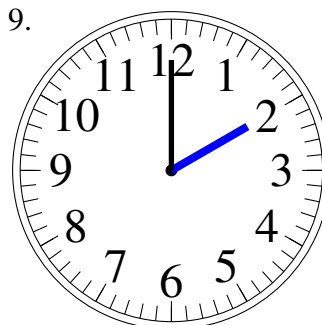
11:00

8.



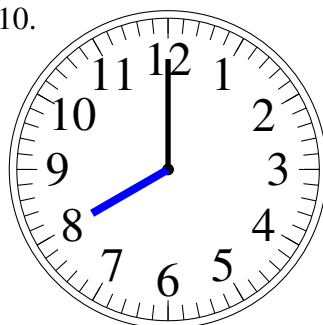
6:00

9.



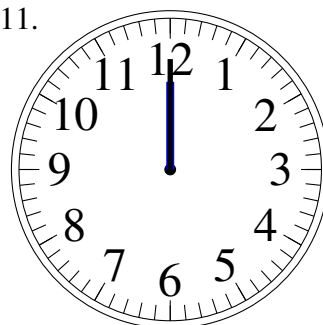
2:00

10.



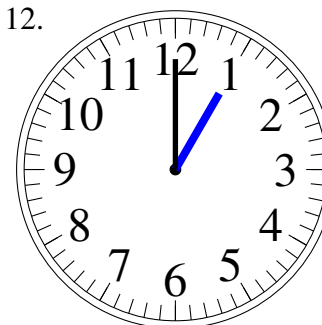
8:00

11.



12:00

12.



1:00