

Dessin d'Aiguilles d'une Horloge Analogique (E)

Dessinez les aiguilles des horloges.

1.



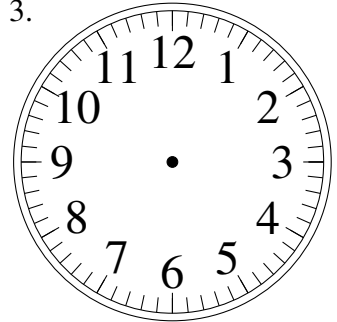
8:15

2.



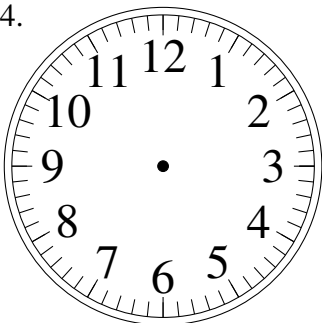
9:30

3.



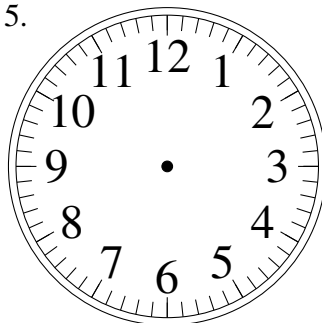
7:00

4.



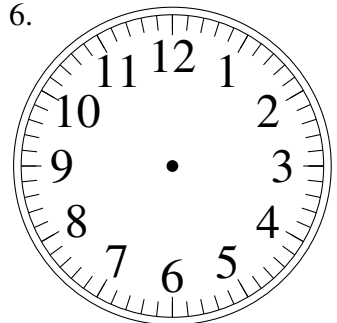
7:45

5.



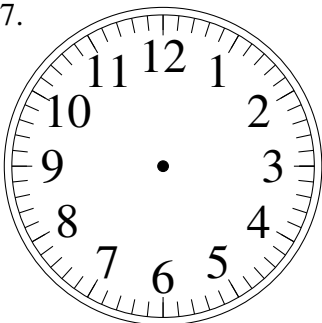
8:45

6.



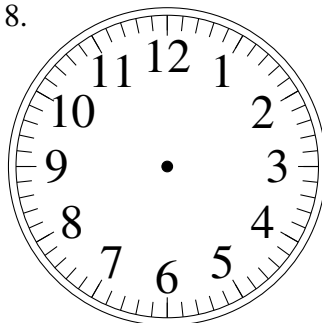
9:30

7.



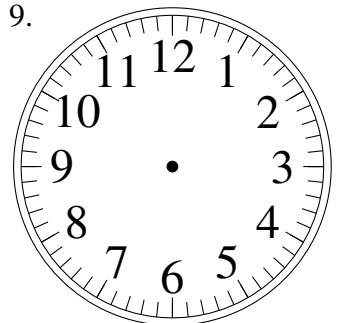
8:45

8.



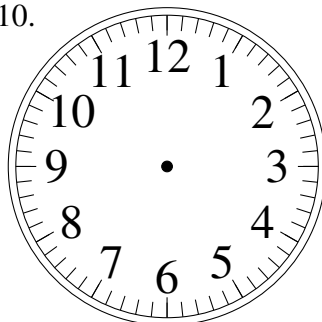
12:00

9.



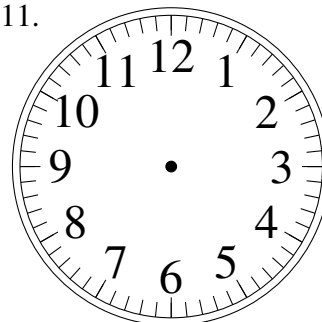
7:00

10.



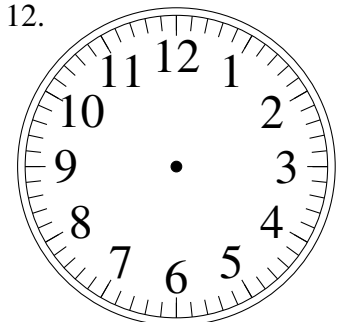
6:00

11.



8:30

12.

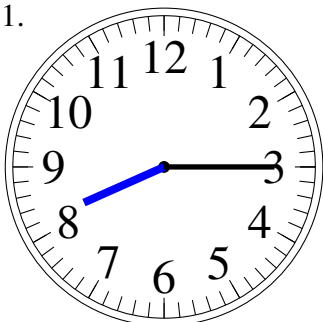


7:15

Dessin d'Aiguilles d'une Horloge Analogique (E) Solutions

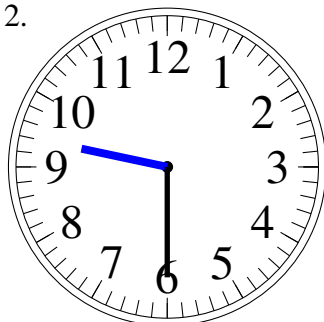
Dessinez les aiguilles des horloges.

1.



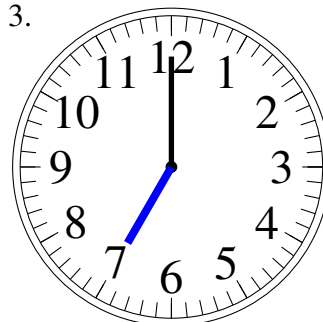
8:15

2.



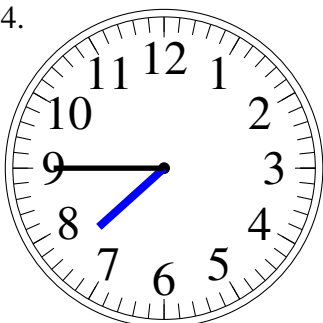
9:30

3.



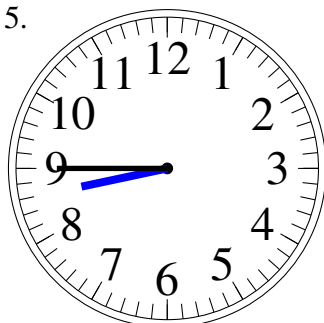
7:00

4.



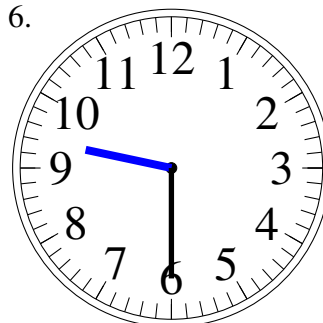
7:45

5.



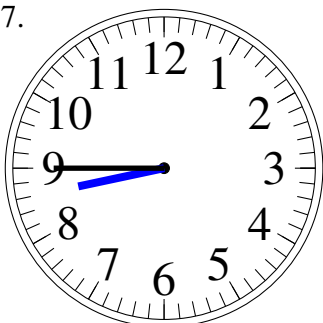
8:45

6.



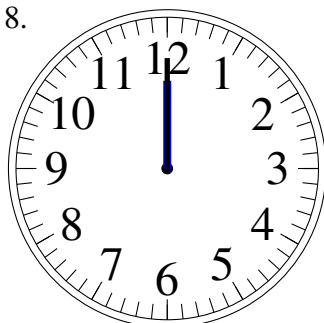
9:30

7.



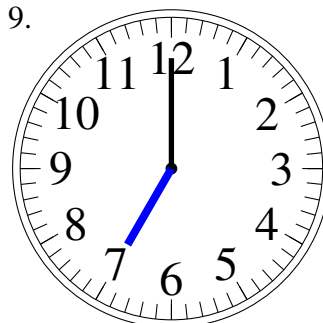
8:45

8.



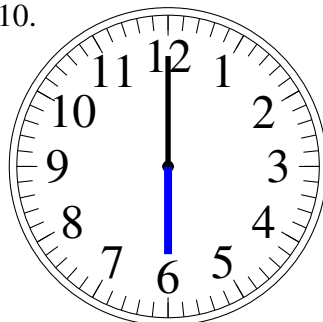
12:00

9.



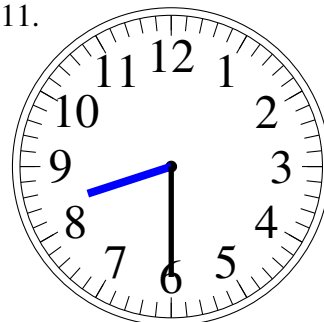
7:00

10.



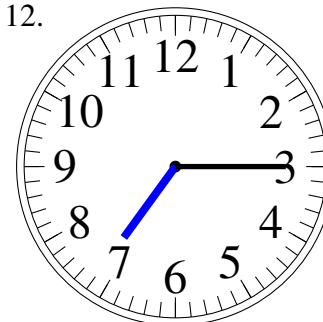
6:00

11.



8:30

12.



7:15