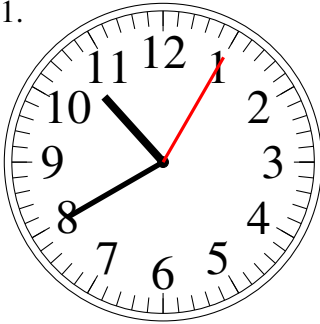


# Lecture d'Horloge Analogue (B)

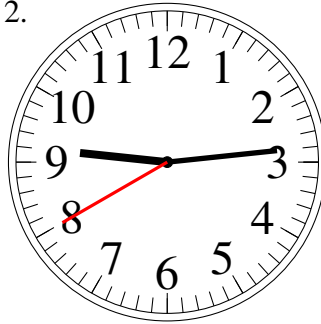
Lisez le temps indiqué et inscrivez le sous l'horloge.

1.



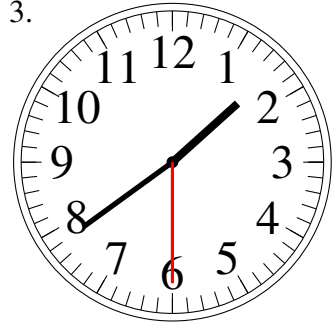
\_\_\_\_\_

2.



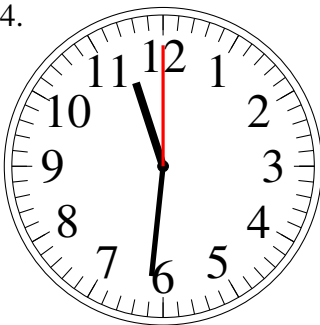
\_\_\_\_\_

3.



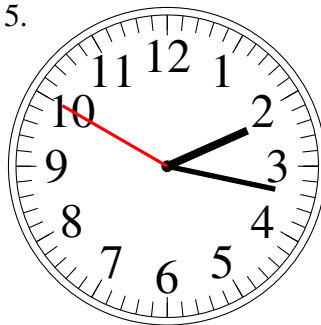
\_\_\_\_\_

4.



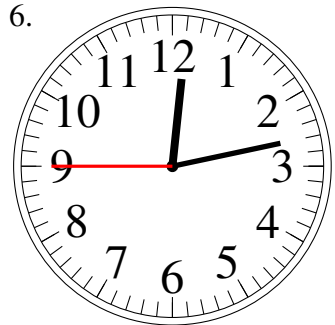
\_\_\_\_\_

5.



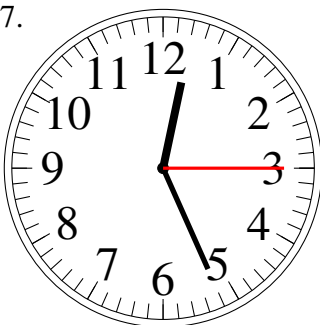
\_\_\_\_\_

6.



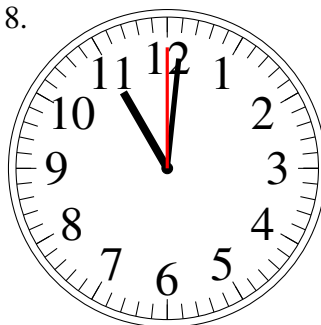
\_\_\_\_\_

7.



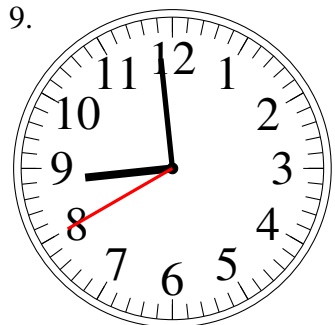
\_\_\_\_\_

8.



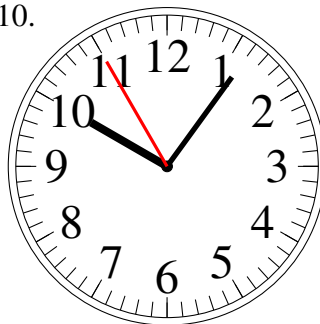
\_\_\_\_\_

9.



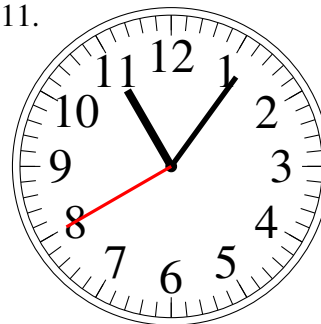
\_\_\_\_\_

10.



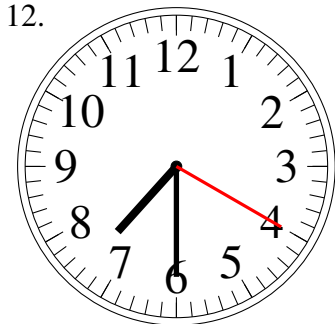
\_\_\_\_\_

11.



\_\_\_\_\_

12.

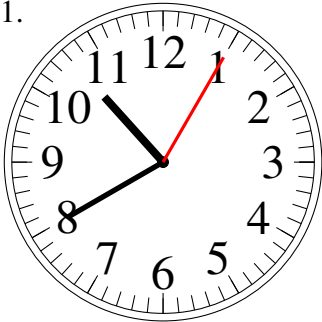


\_\_\_\_\_

# Lecture d'Horloge Analogue (B) Solutions

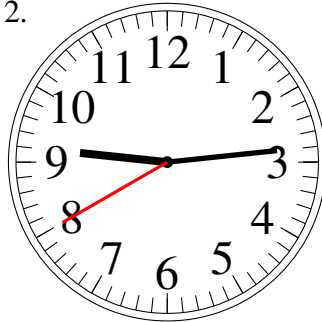
Lisez le temps indiqué et inscrivez le sous l'horloge.

1.



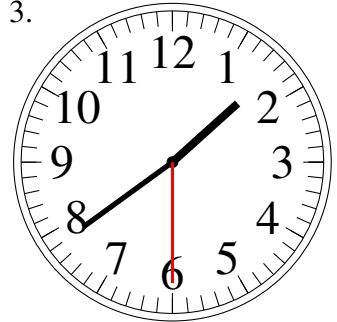
10:40.05

2.



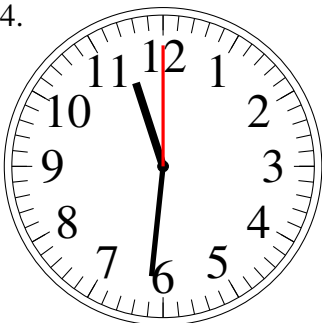
9:14.40

3.



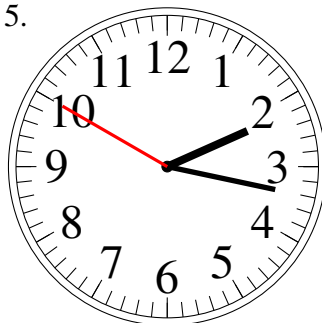
1:39.30

4.



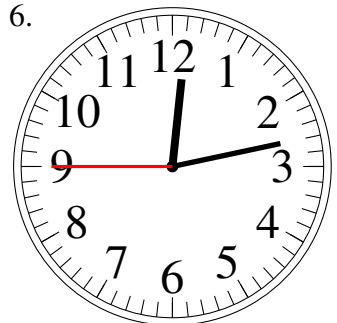
11:31.00

5.



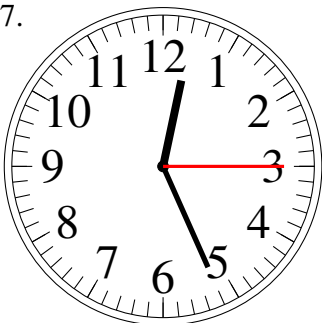
2:17.50

6.



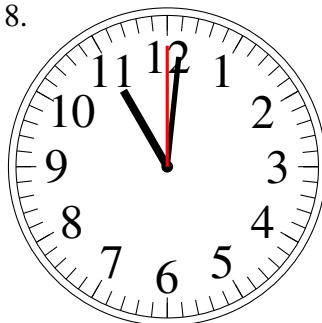
12:13.45

7.



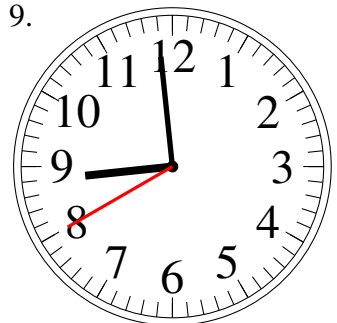
12:26.15

8.



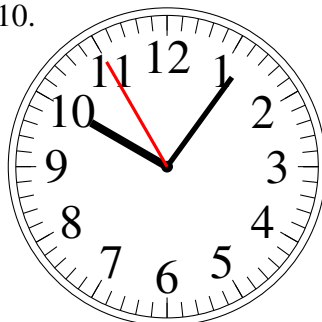
11:01.00

9.



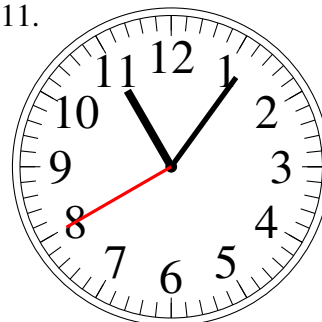
8:59.40

10.



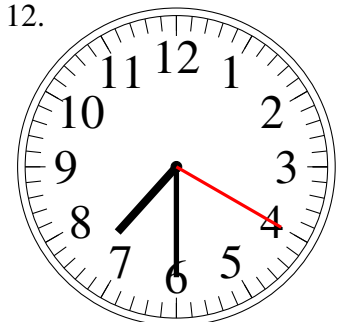
10:06.55

11.



11:06.40

12.



7:30.20