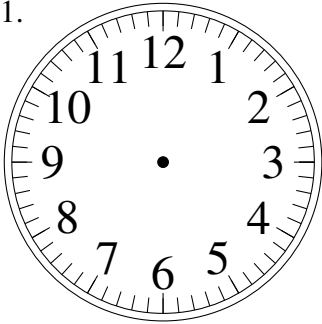


Esquisse d'Horloges Analogues (I)

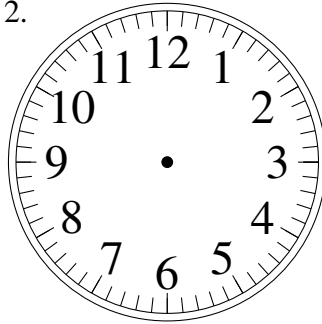
Dessiner les aiguilles de l'horloge pour qu'elles montrent le temps indiqué.

1.



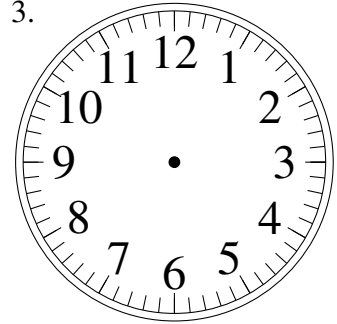
7:00

2.



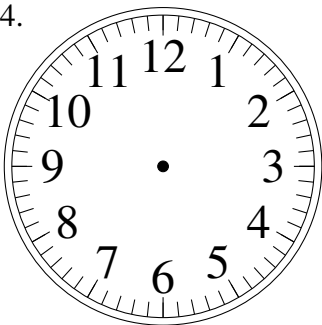
11:30

3.



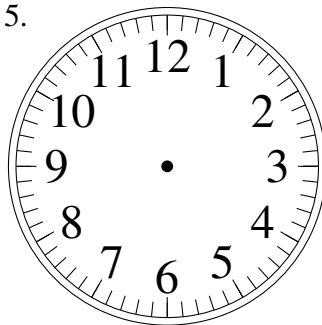
6:30

4.



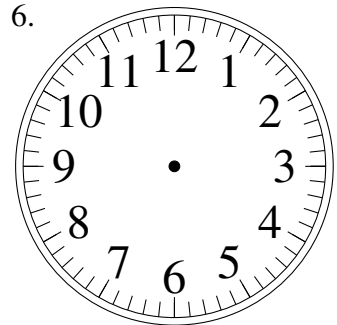
5:30

5.



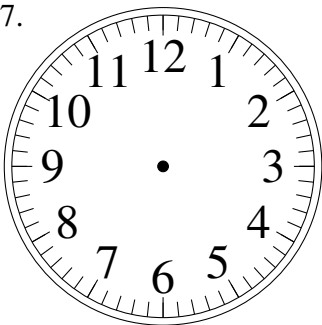
12:30

6.



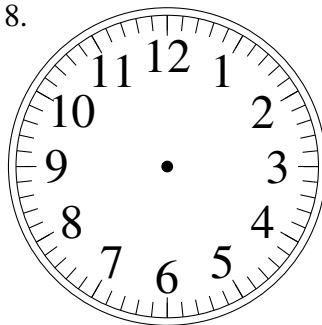
8:30

7.



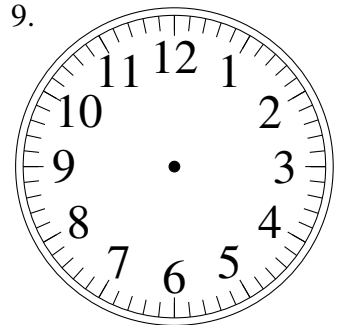
5:30

8.



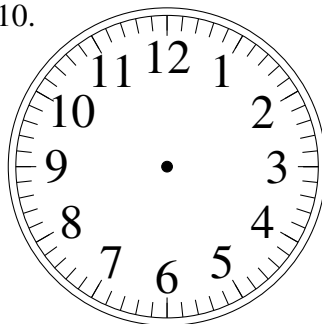
5:30

9.



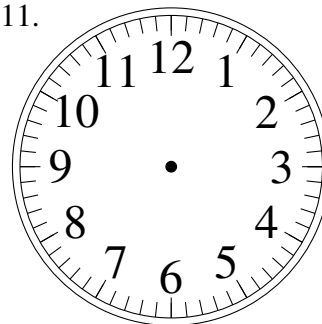
7:00

10.



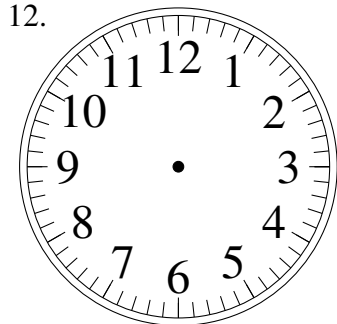
1:00

11.



12:00

12.

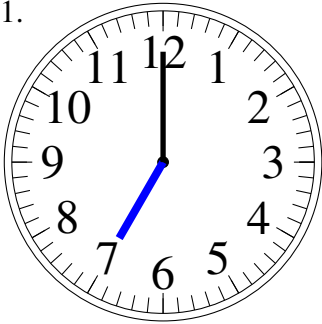


9:00

Esquisse d'Horloges Analogues (I) Solutions

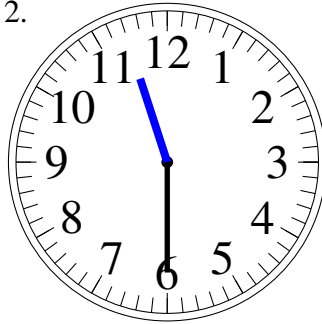
Dessiner les aiguilles de l'horloge pour qu'elles montrent le temps indiqué.

1.



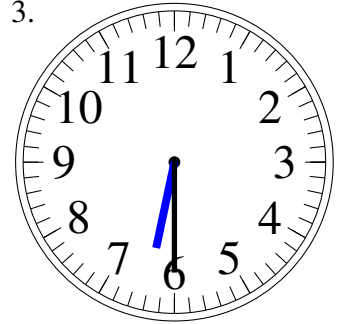
7:00

2.



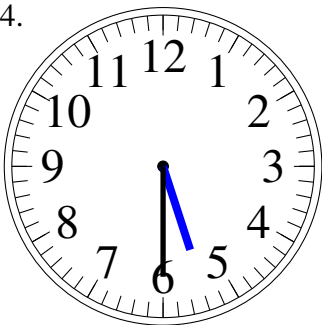
11:30

3.



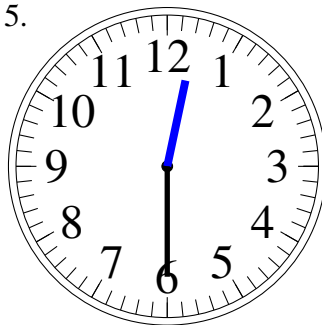
6:30

4.



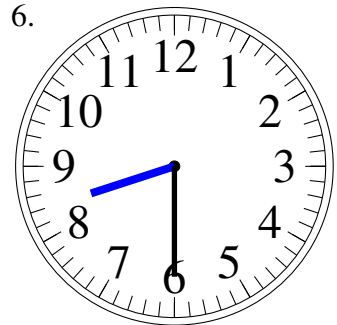
5:30

5.



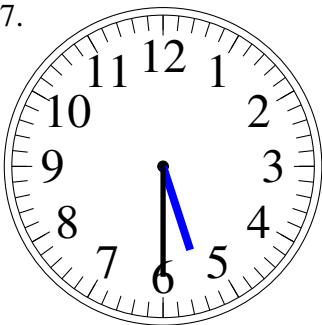
12:30

6.



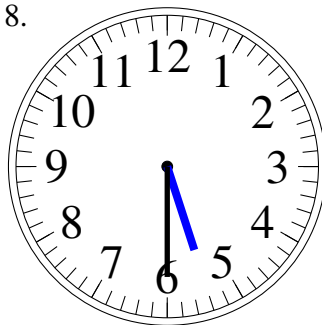
8:30

7.



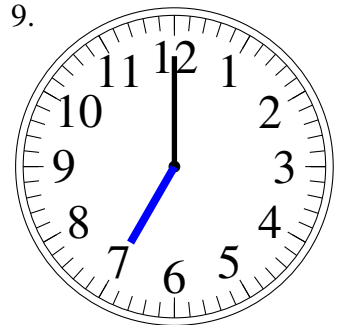
5:30

8.



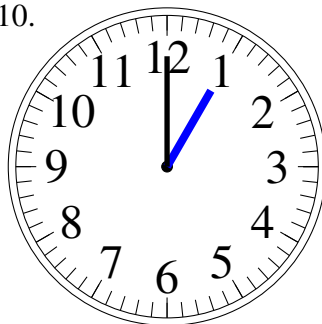
5:30

9.



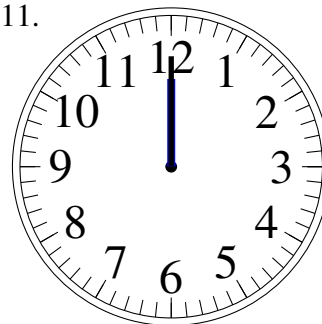
7:00

10.



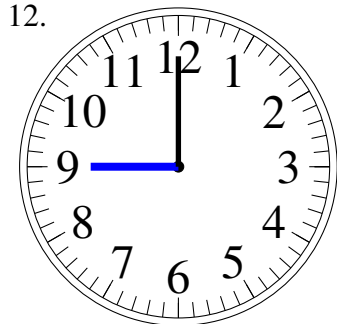
1:00

11.



12:00

12.



9:00