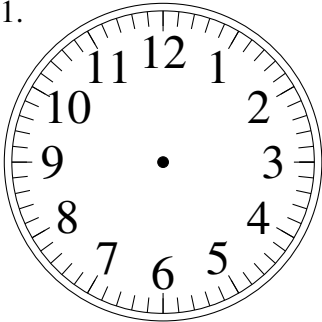


Esquisse d'Horloges Analogues (G)

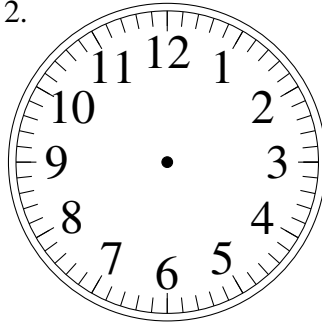
Dessiner les aiguilles de l'horloge pour qu'elles montrent le temps indiqué.

1.



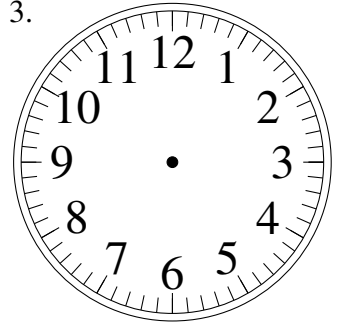
11:00

2.



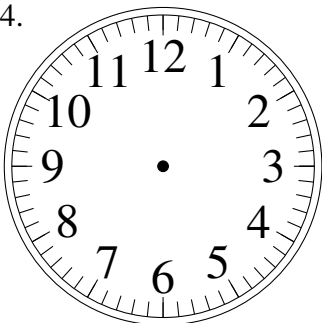
3:00

3.



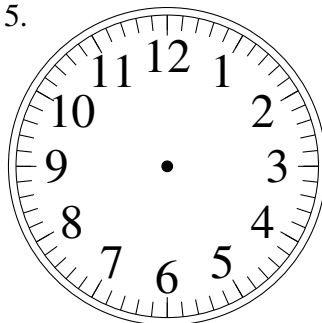
7:00

4.



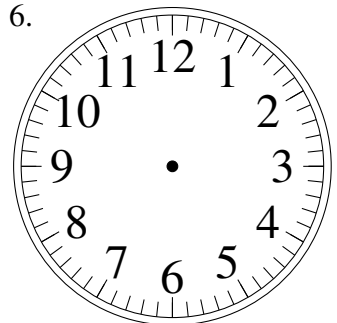
9:15

5.



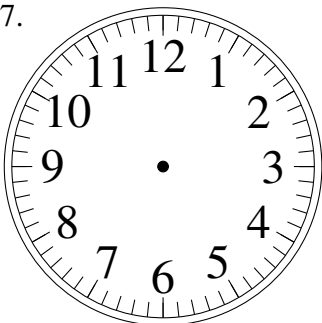
3:00

6.



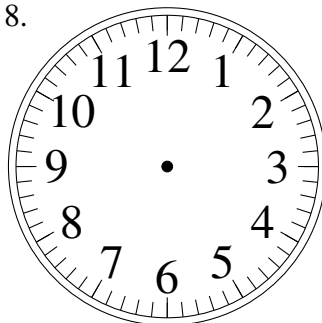
12:45

7.



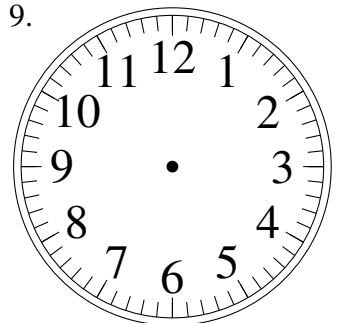
2:15

8.



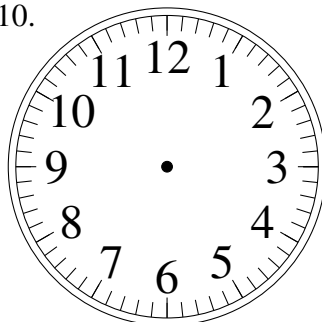
3:15

9.



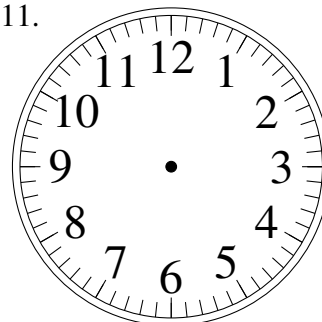
7:15

10.



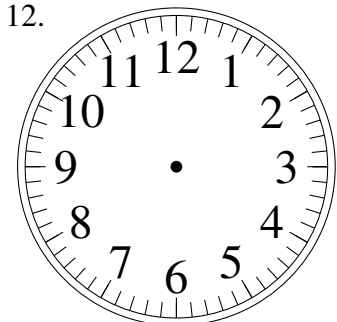
8:15

11.



1:45

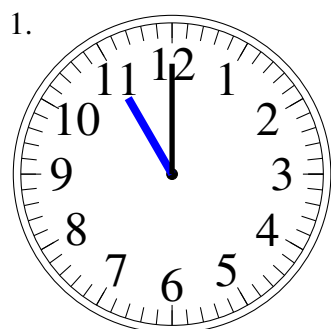
12.



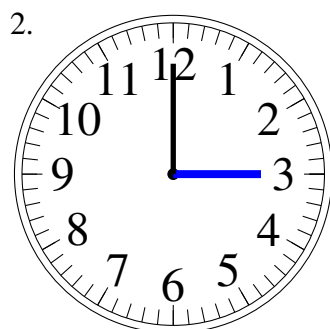
9:00

Esquisse d'Horloges Analogues (G) Solutions

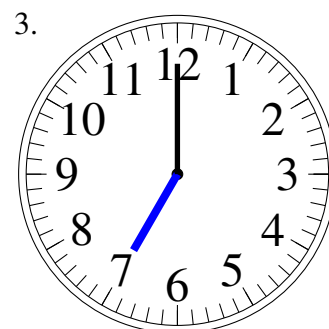
Dessiner les aiguilles de l'horloge pour qu'elles montrent le temps indiqué.



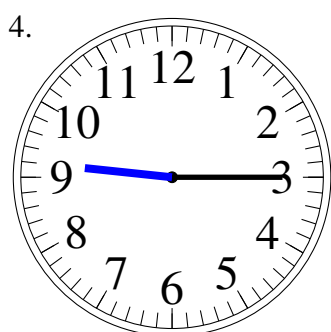
11:00



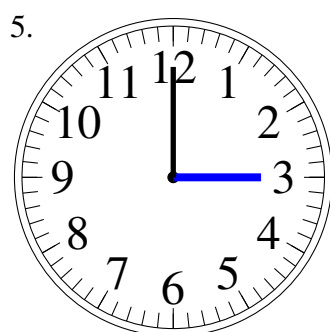
3:00



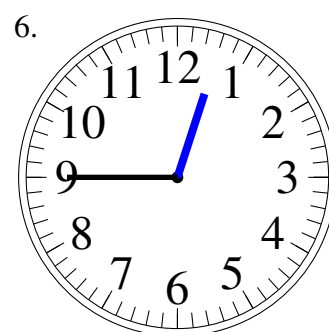
7:00



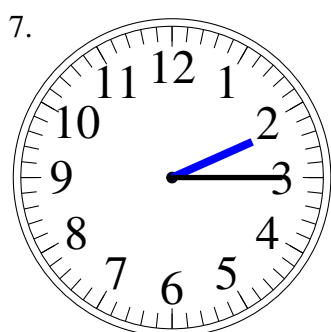
9:15



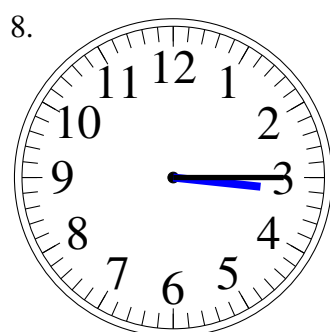
3:00



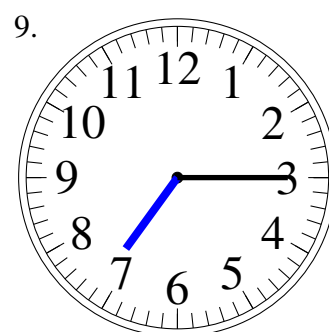
12:45



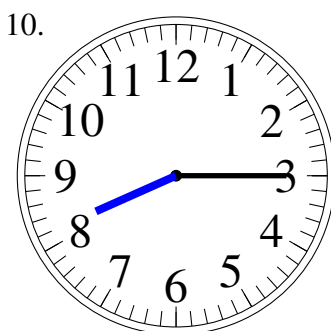
2:15



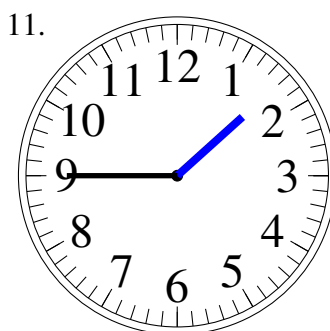
3:15



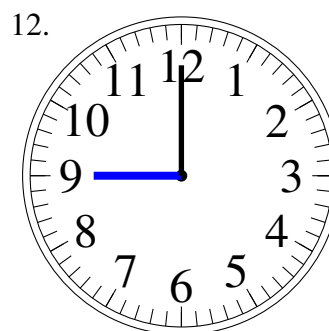
7:15



8:15



1:45



9:00