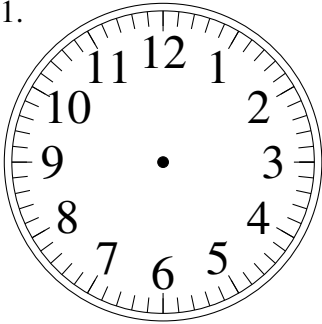


Esquisse d'Horloges Analogues (F)

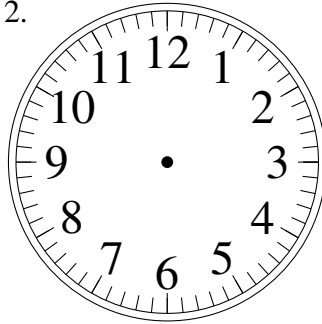
Dessiner les aiguilles de l'horloge pour qu'elles montrent le temps indiqué.

1.



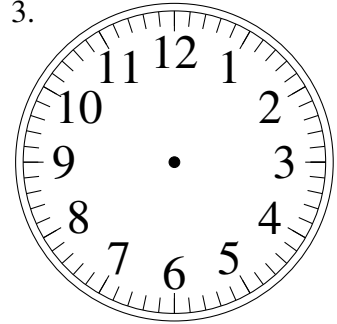
2:30

2.



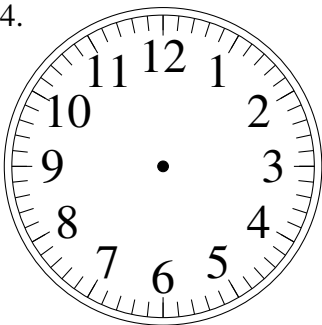
3:15

3.



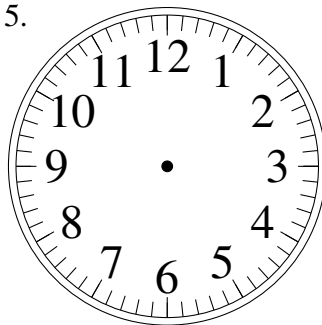
4:15

4.



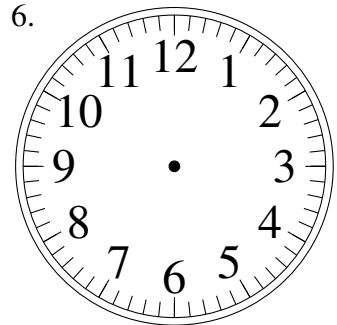
8:00

5.



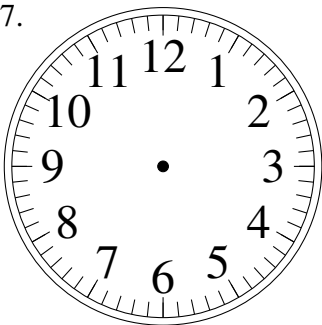
4:00

6.



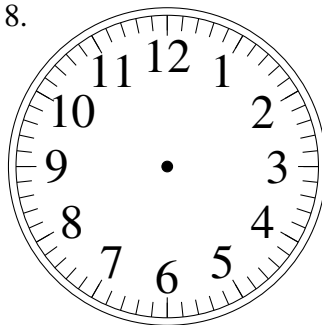
2:45

7.



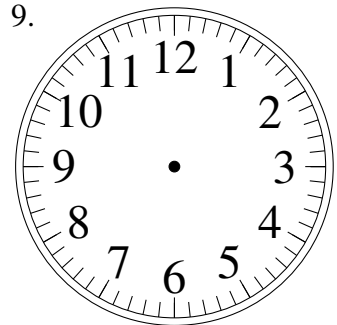
3:30

8.



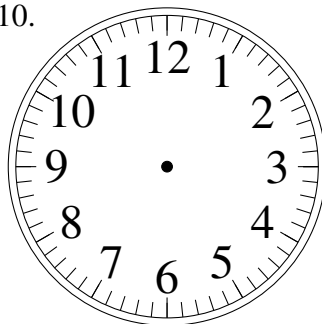
5:30

9.



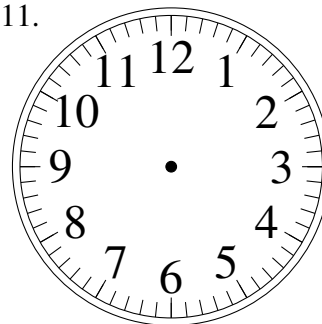
11:45

10.



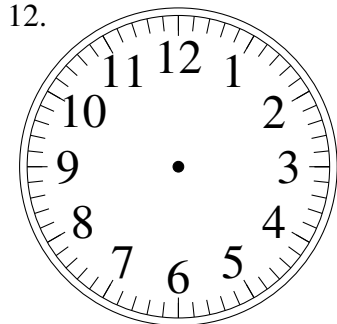
4:30

11.



6:00

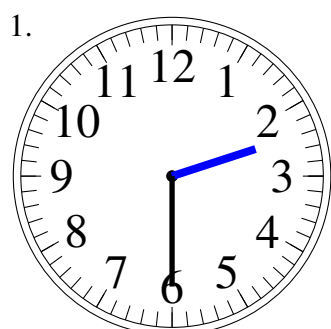
12.



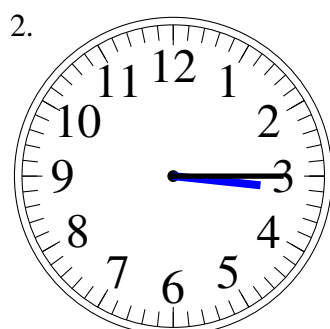
7:00

Esquisse d'Horloges Analogues (F) Solutions

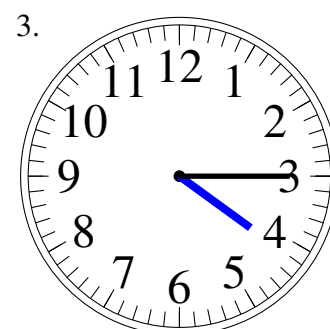
Dessiner les aiguilles de l'horloge pour qu'elles montrent le temps indiqué.



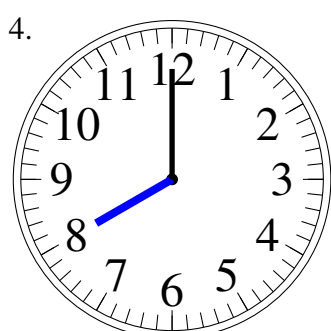
2:30



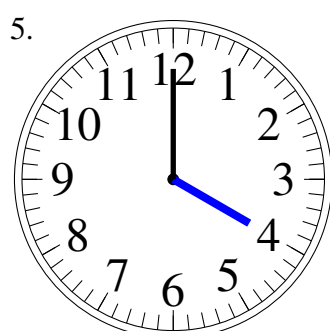
3:15



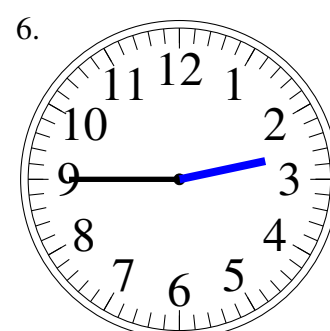
4:15



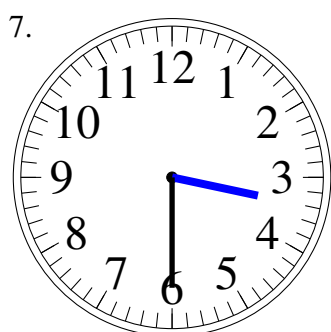
8:00



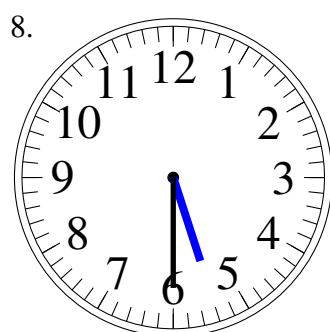
4:00



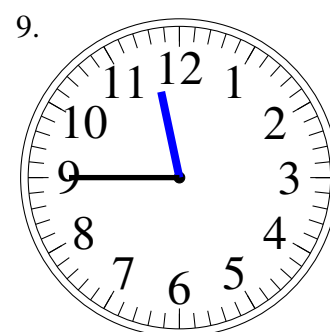
2:45



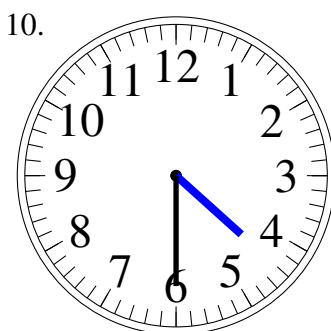
3:30



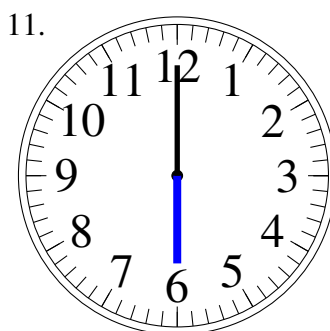
5:30



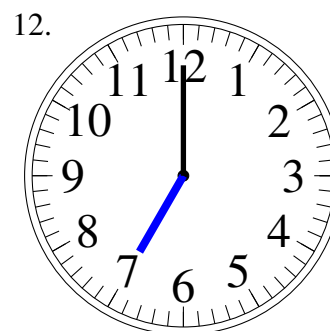
11:45



4:30



6:00



7:00