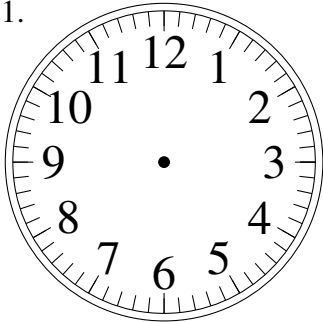


Esquisse d'Horloges Analogues (E)

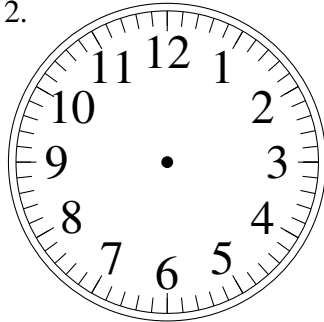
Dessiner les aiguilles de l'horloge pour qu'elles montrent le temps indiqué.

1.



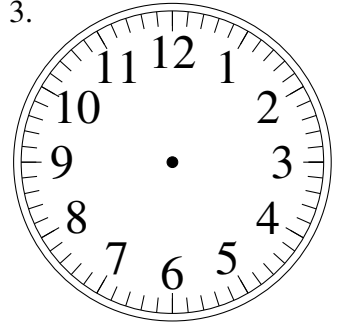
1:30

2.



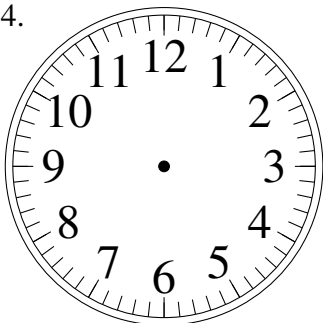
10:45

3.



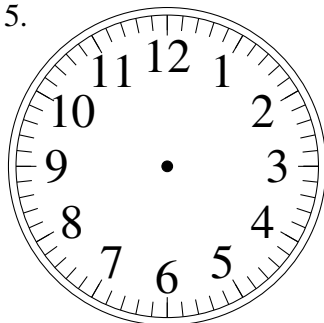
8:15

4.



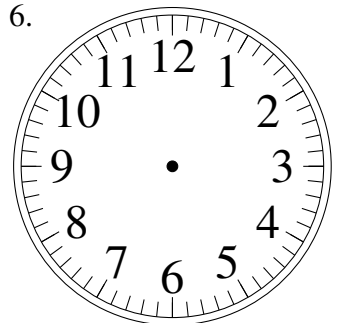
1:00

5.



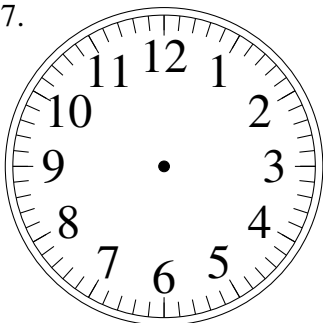
11:45

6.



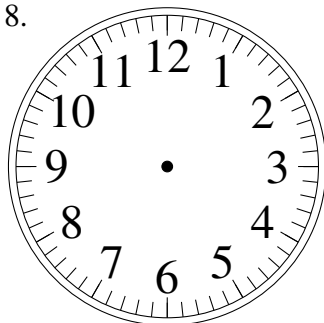
11:00

7.



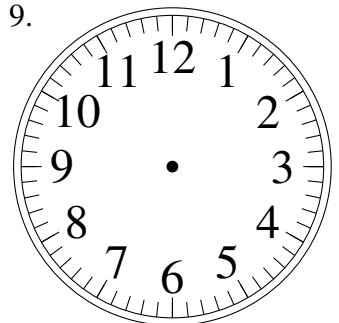
1:00

8.



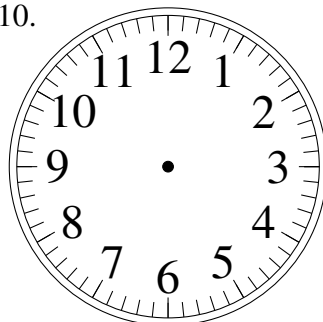
11:30

9.



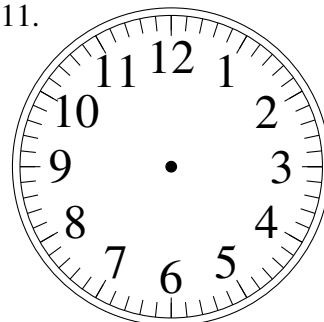
7:15

10.



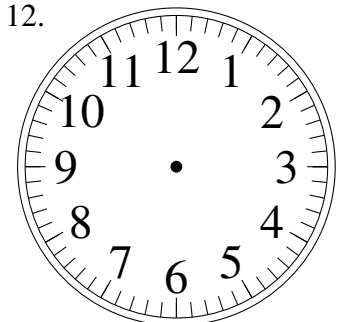
7:30

11.



8:00

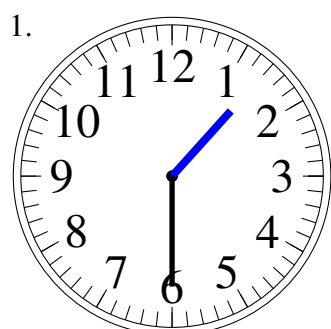
12.



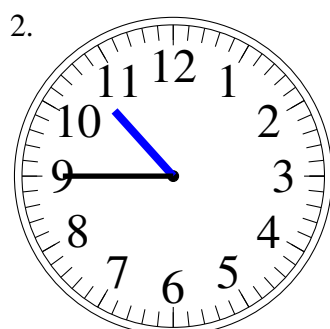
11:15

Esquisse d'Horloges Analogues (E) Solutions

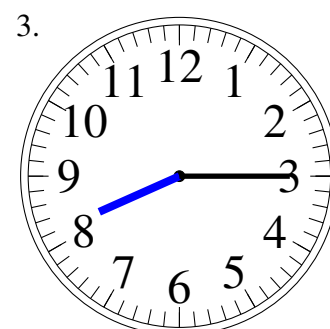
Dessiner les aiguilles de l'horloge pour qu'elles montrent le temps indiqué.



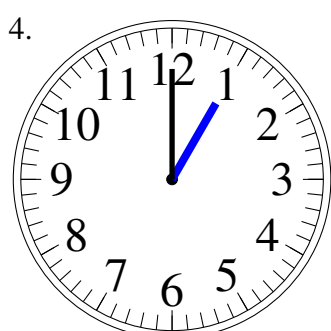
1:30



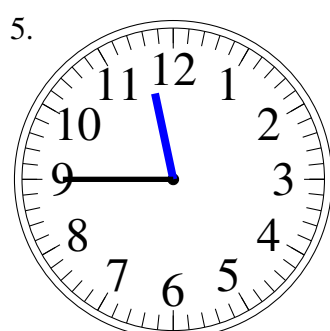
10:45



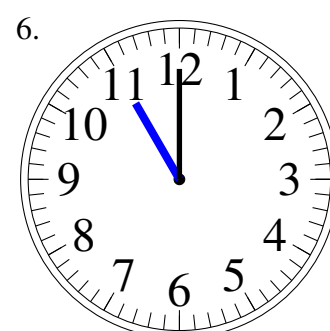
8:15



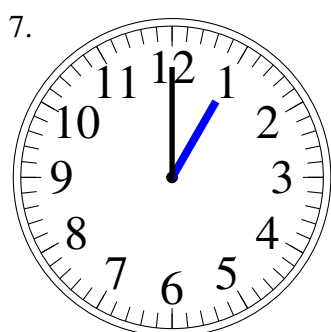
1:00



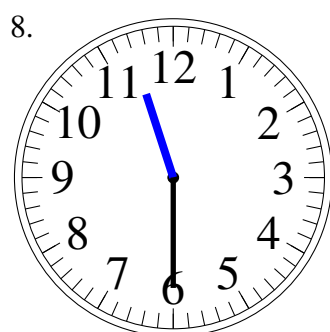
11:45



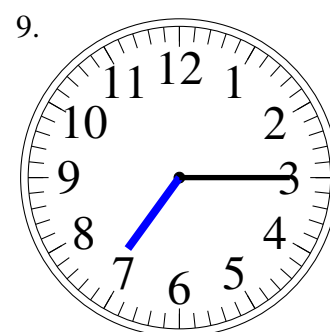
11:00



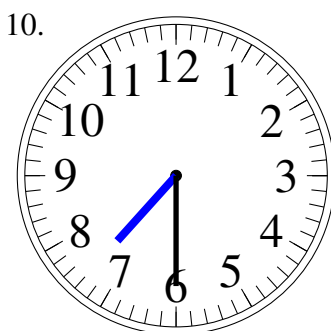
1:00



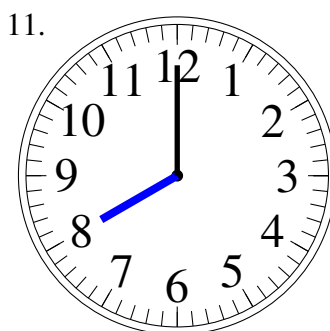
11:30



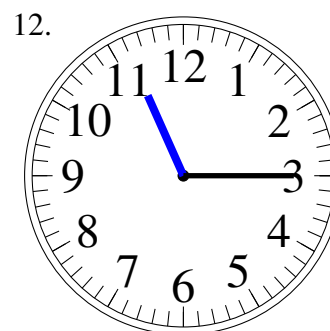
7:15



7:30



8:00



11:15