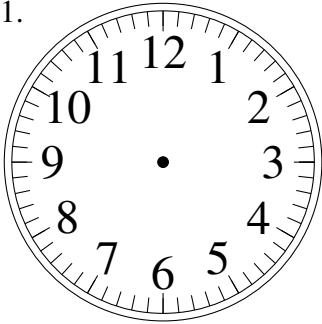


Esquisse d'Horloges Analogues (C)

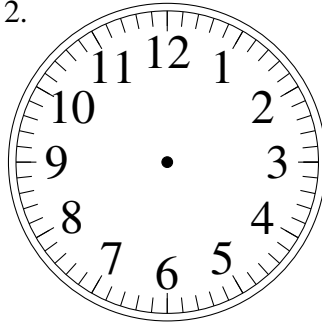
Dessiner les aiguilles de l'horloge pour qu'elles montrent le temps indiqué.

1.



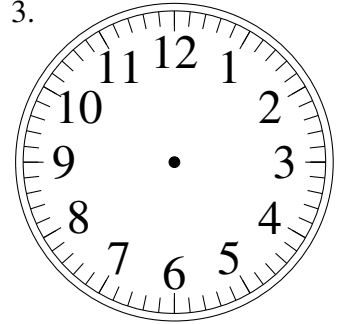
8:00

2.



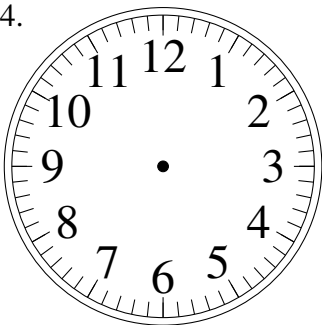
10:45

3.



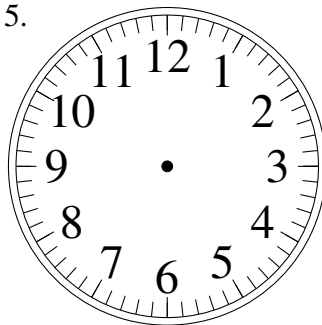
8:30

4.



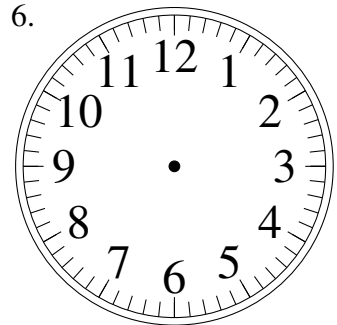
5:00

5.



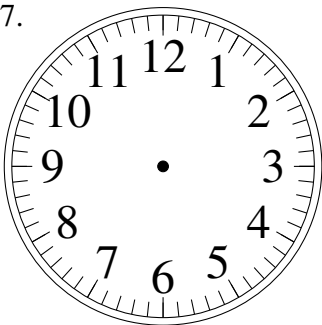
10:30

6.



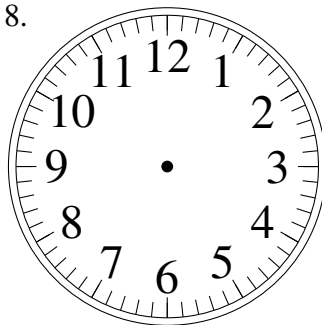
3:45

7.



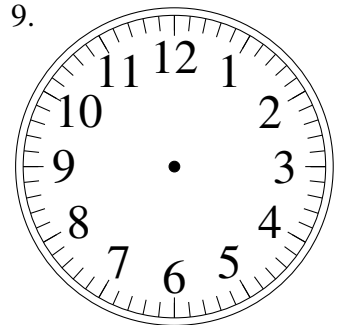
5:30

8.



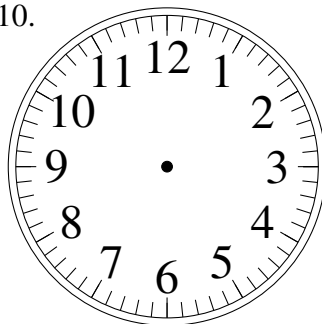
3:15

9.



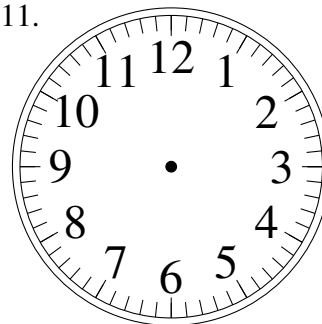
10:30

10.



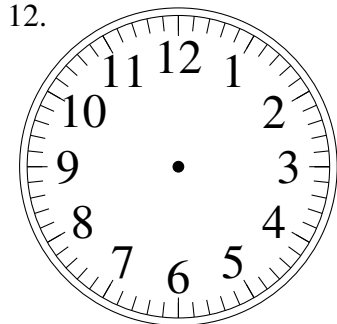
4:30

11.



6:00

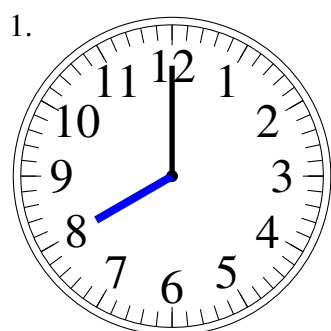
12.



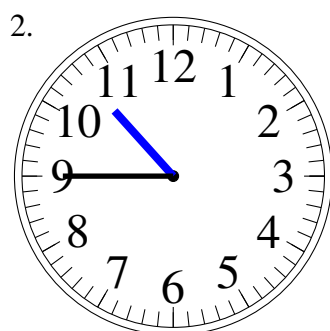
12:45

Esquisse d'Horloges Analogues (C) Solutions

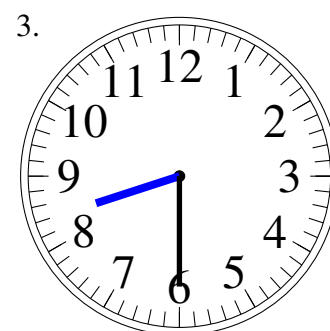
Dessiner les aiguilles de l'horloge pour qu'elles montrent le temps indiqué.



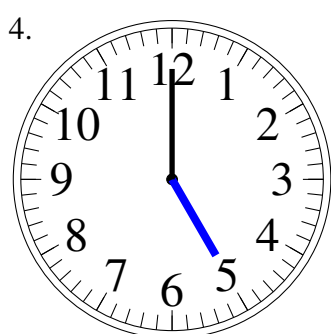
8:00



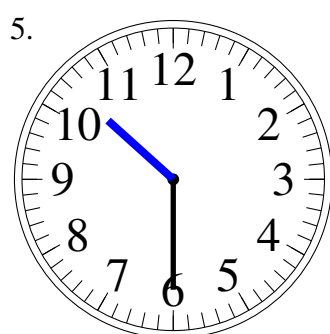
10:45



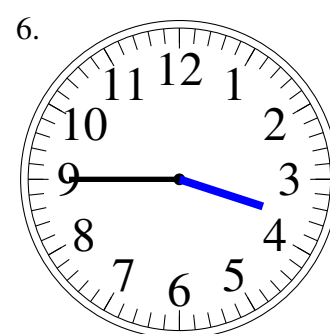
8:30



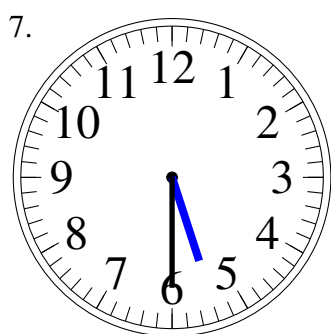
5:00



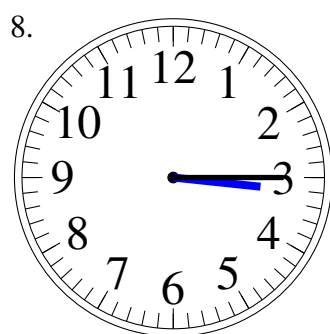
10:30



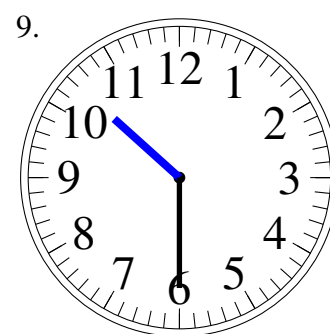
3:45



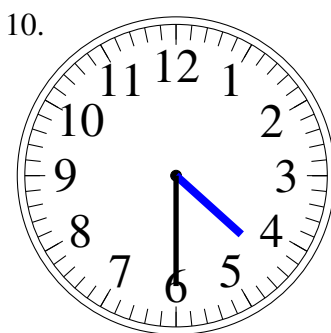
5:30



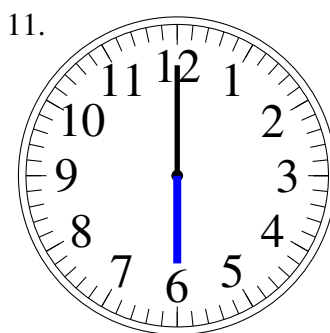
3:15



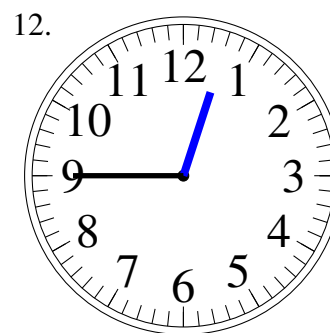
10:30



4:30



6:00



12:45