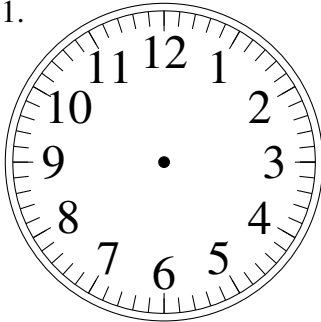


Esquisse d'Horloges Analogues (I)

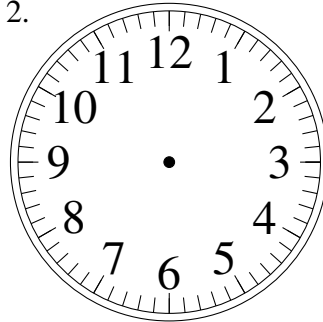
Dessiner les aiguilles de l'horloge pour qu'elles montrent le temps indiqué.

1.



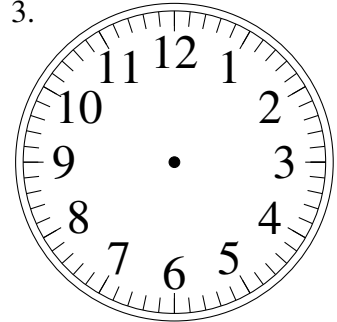
1:00

2.



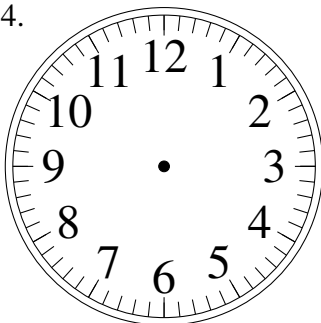
12:45

3.



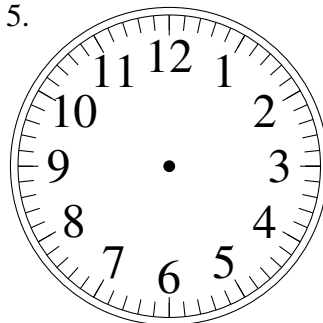
9:40

4.



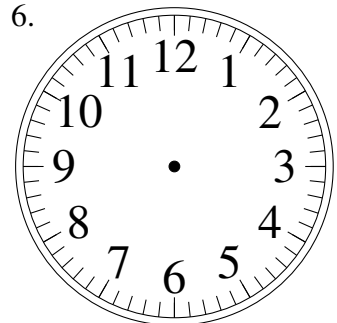
5:25

5.



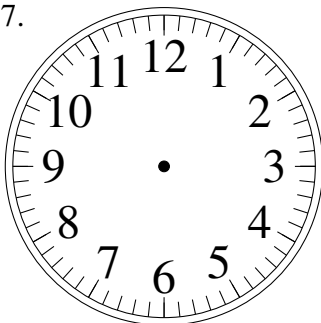
9:00

6.



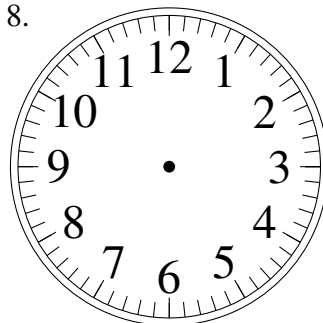
9:15

7.



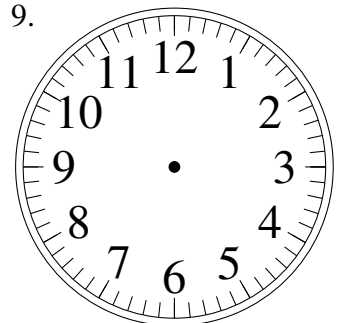
6:25

8.



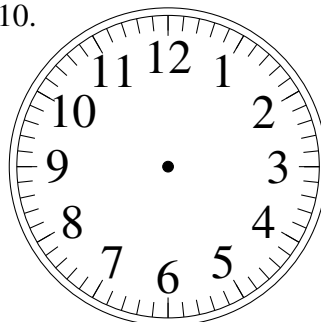
6:15

9.



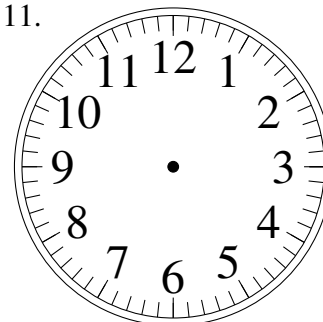
3:45

10.



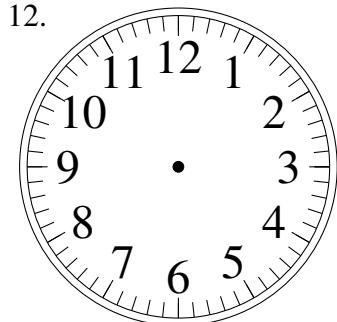
1:20

11.



7:20

12.

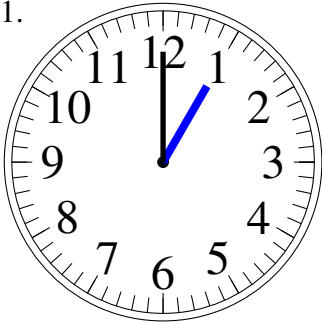


10:35

Esquisse d'Horloges Analogues (I) Solutions

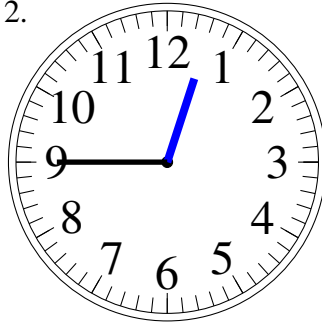
Dessiner les aiguilles de l'horloge pour qu'elles montrent le temps indiqué.

1.



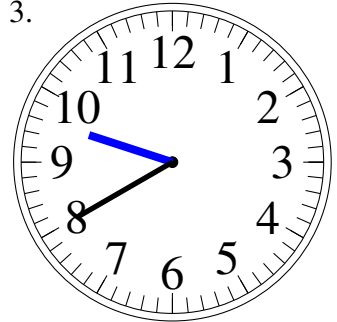
1:00

2.



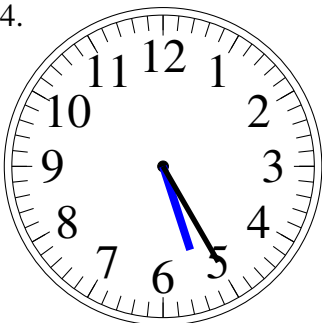
12:45

3.



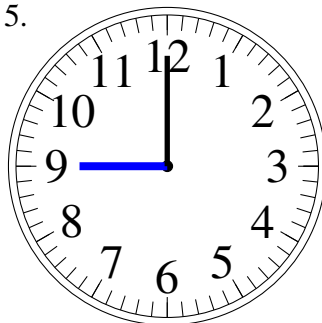
9:40

4.



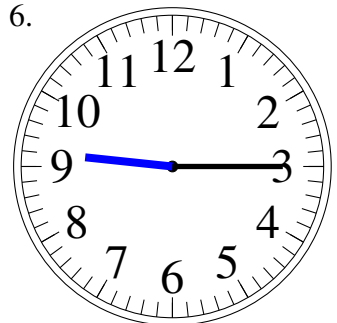
5:25

5.



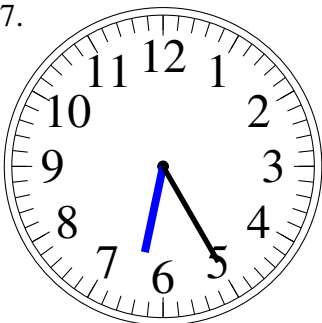
9:00

6.



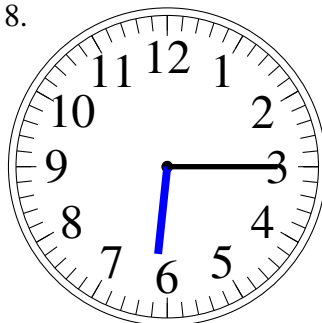
9:15

7.



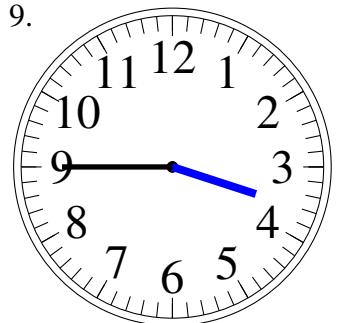
6:25

8.



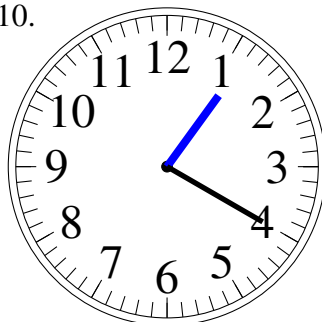
6:15

9.



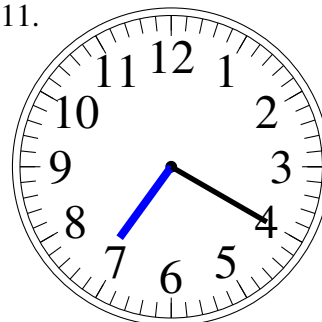
3:45

10.



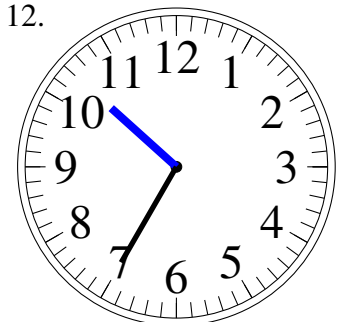
1:20

11.



7:20

12.



10:35