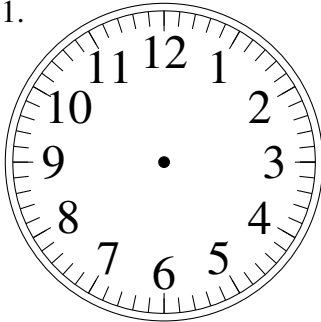


# Esquisse d'Horloges Analogues (E)

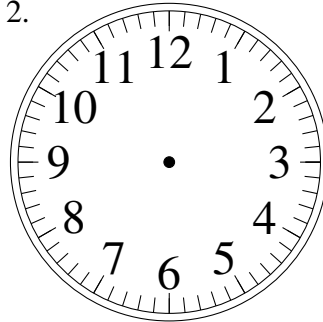
Dessiner les aiguilles de l'horloge pour qu'elles montrent le temps indiqué.

1.



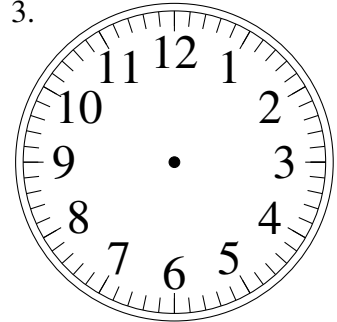
1:30

2.



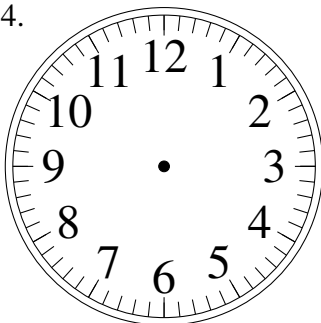
10:15

3.



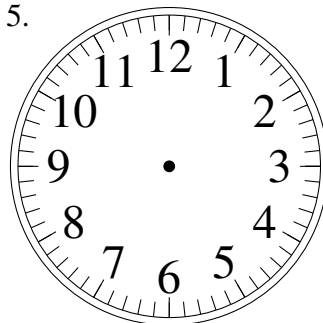
1:50

4.



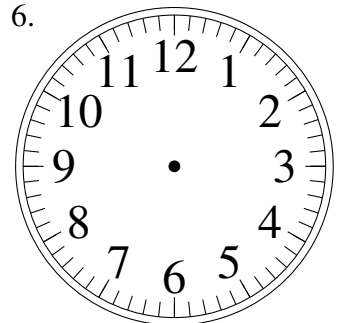
2:00

5.



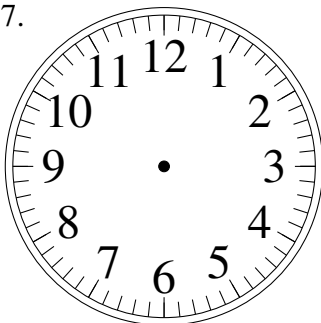
4:25

6.



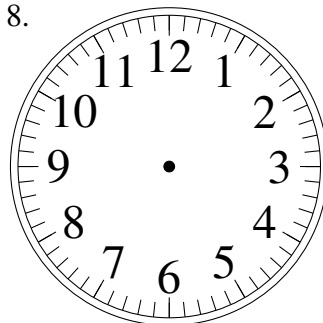
8:25

7.



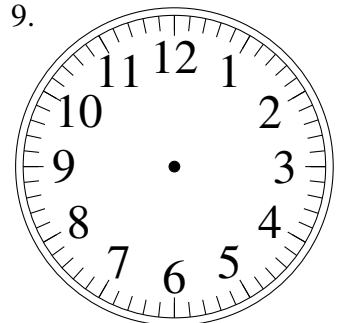
3:30

8.



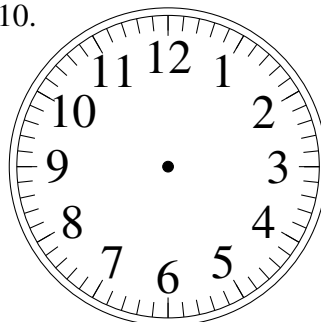
3:00

9.



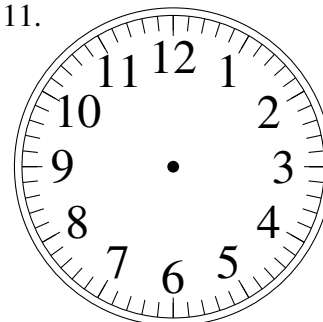
11:05

10.



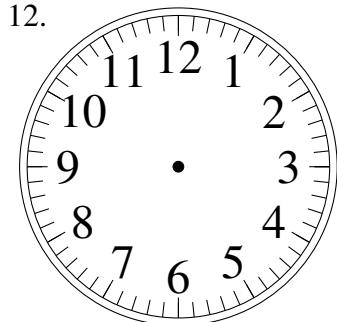
4:40

11.



3:25

12.

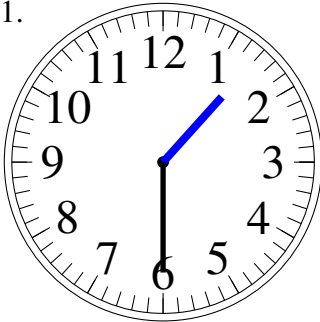


1:50

# Esquisse d'Horloges Analogues (E) Solutions

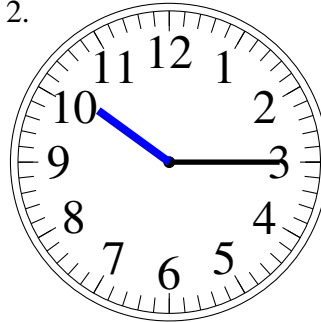
Dessiner les aiguilles de l'horloge pour qu'elles montrent le temps indiqué.

1.



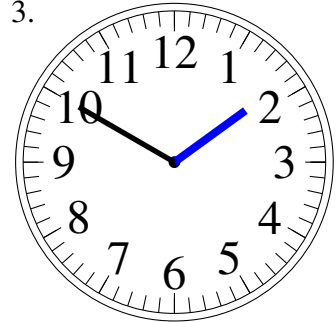
1:30

2.



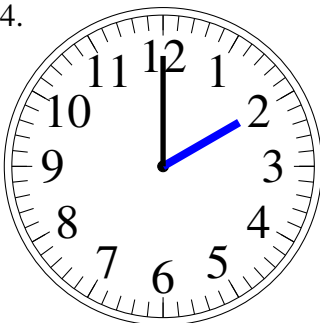
10:15

3.



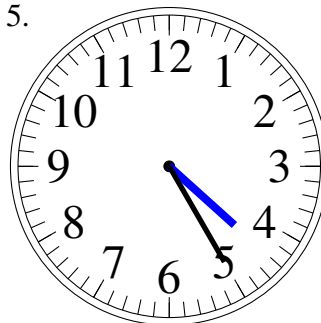
1:50

4.



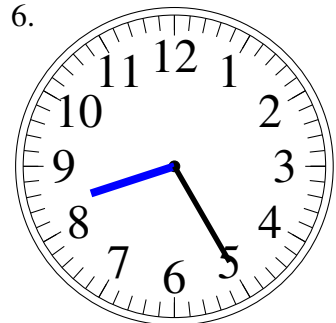
2:00

5.



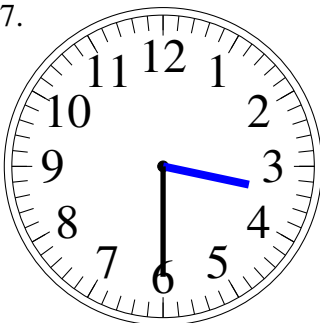
4:25

6.



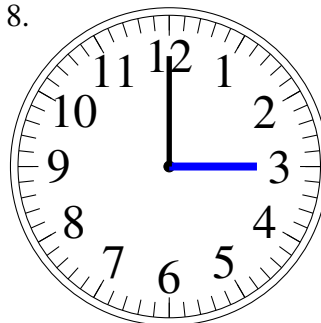
8:25

7.



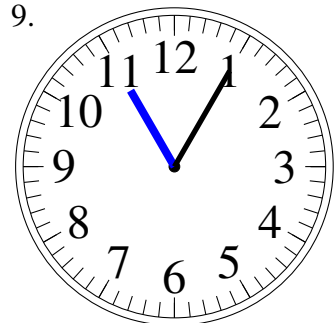
3:30

8.



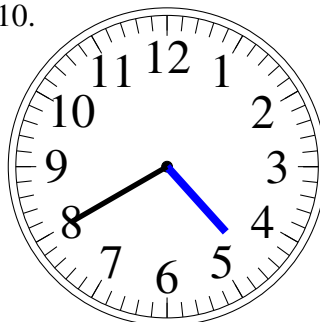
3:00

9.



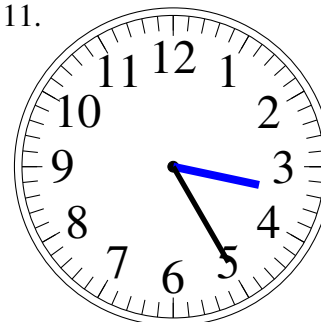
11:05

10.



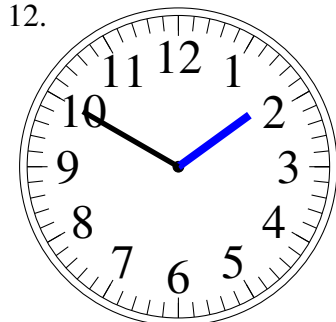
4:40

11.



3:25

12.



1:50