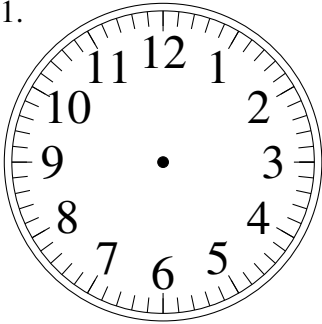


Esquisse d'Horloges Analogues (J)

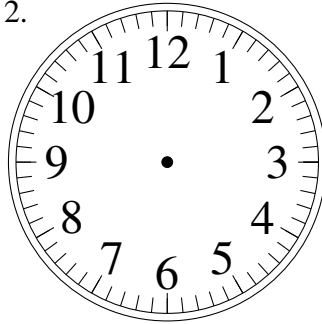
Dessiner les aiguilles de l'horloge pour qu'elles montrent le temps indiqué.

1.



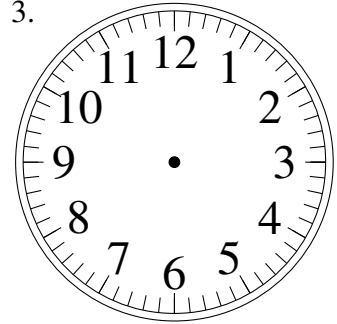
3:14

2.



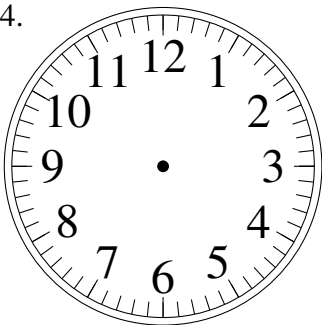
4:31

3.



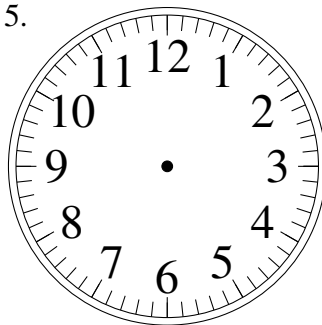
1:53

4.



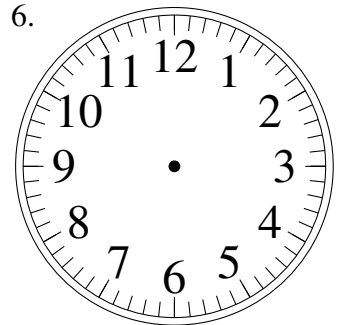
9:59

5.



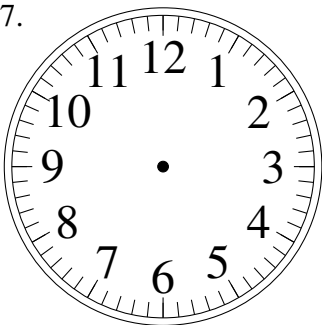
3:38

6.



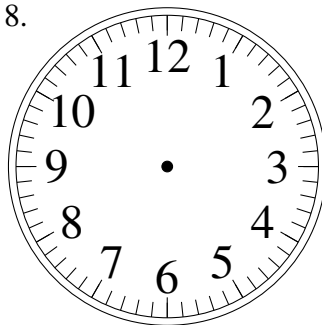
8:40

7.



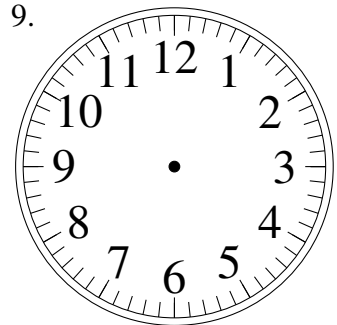
1:24

8.



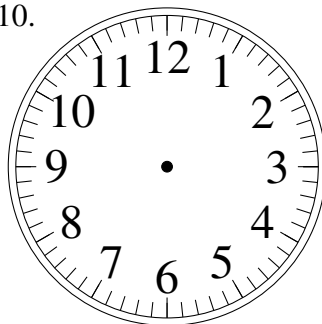
11:52

9.



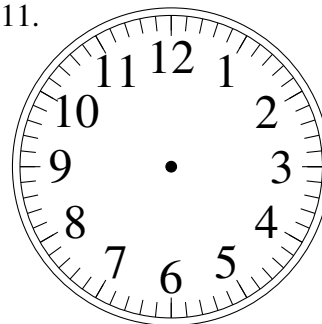
5:15

10.



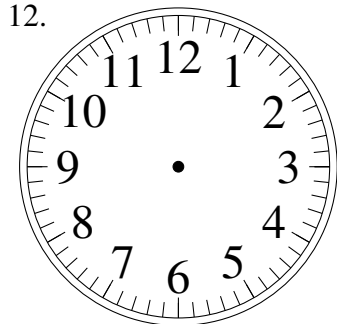
7:33

11.



10:55

12.

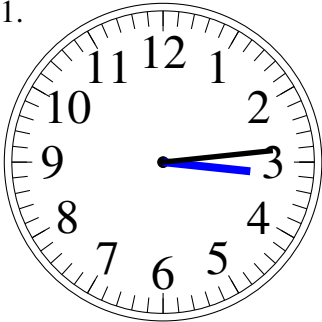


9:05

Esquisse d'Horloges Analogues (J) Solutions

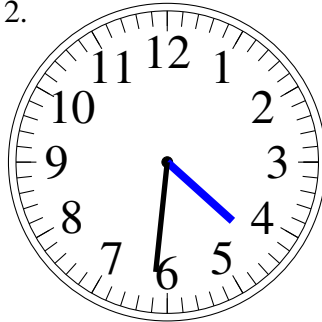
Dessiner les aiguilles de l'horloge pour qu'elles montrent le temps indiqué.

1.



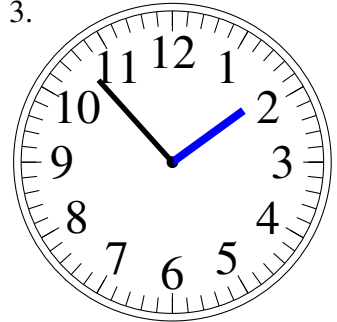
3:14

2.



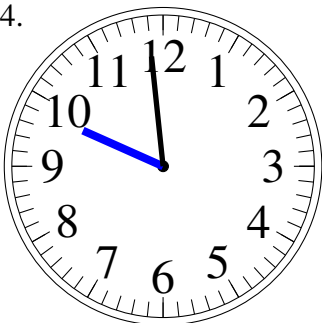
4:31

3.



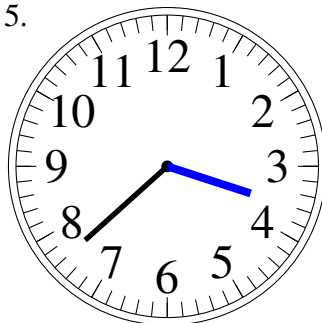
1:53

4.



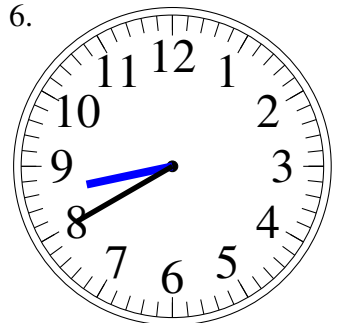
9:59

5.



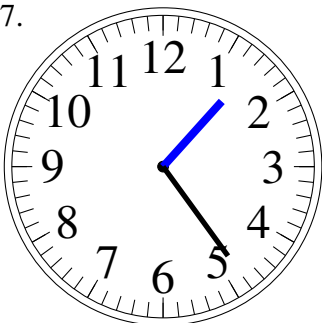
3:38

6.



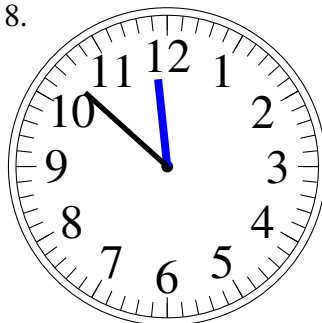
8:40

7.



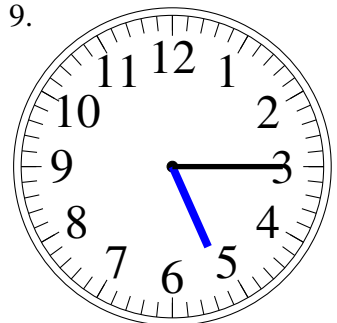
1:24

8.



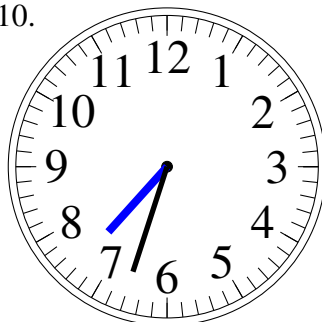
11:52

9.



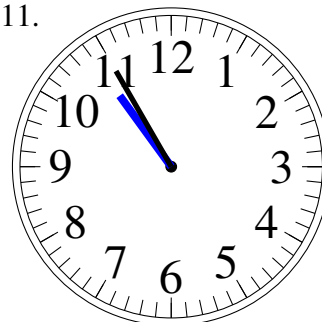
5:15

10.



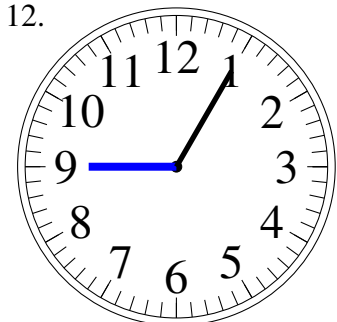
7:33

11.



10:55

12.



9:05