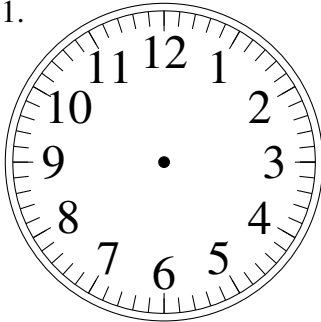


Esquisse d'Horloges Analogues (I)

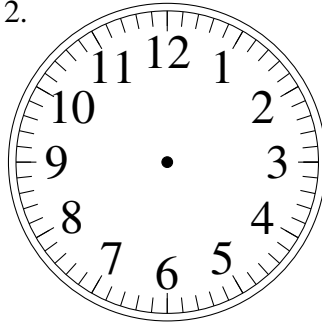
Dessiner les aiguilles de l'horloge pour qu'elles montrent le temps indiqué.

1.



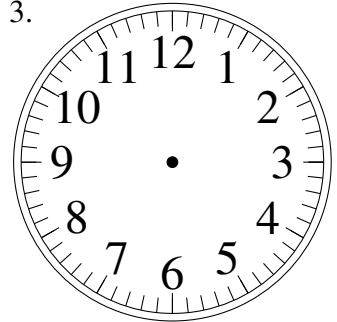
7:37

2.



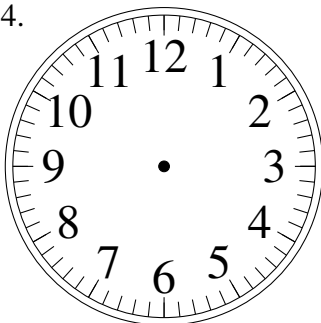
9:39

3.



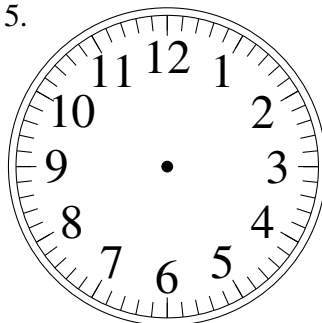
8:40

4.



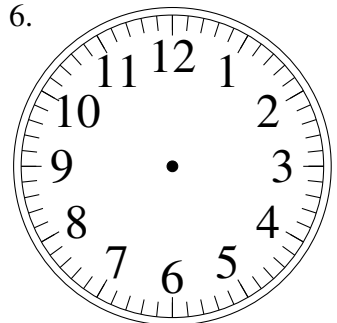
7:36

5.



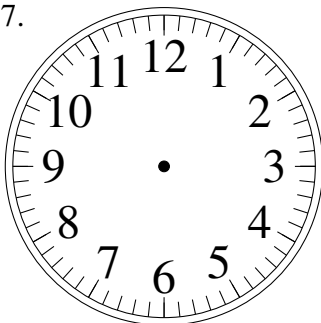
1:02

6.



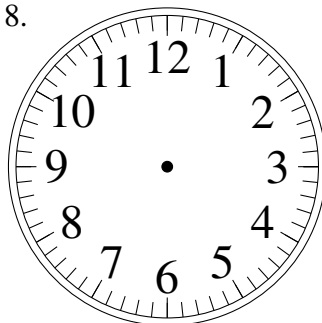
12:05

7.



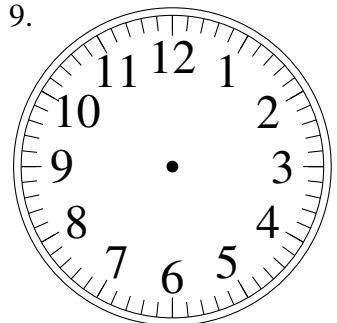
7:30

8.



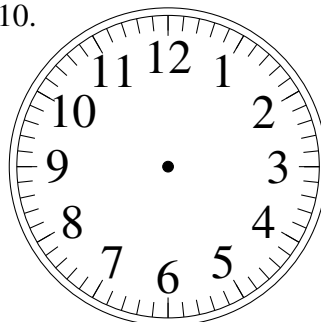
1:07

9.



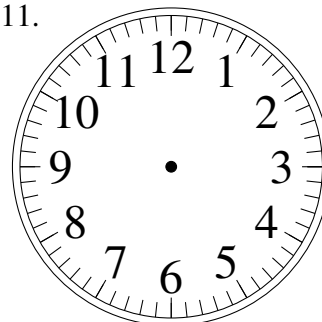
6:43

10.



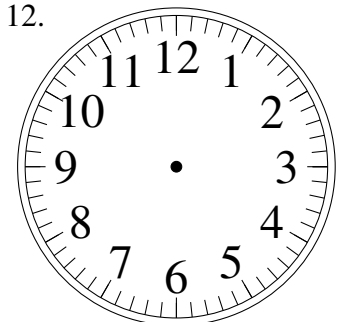
11:04

11.



7:06

12.

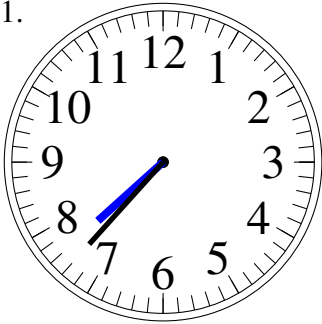


12:16

Esquisse d'Horloges Analogues (I) Solutions

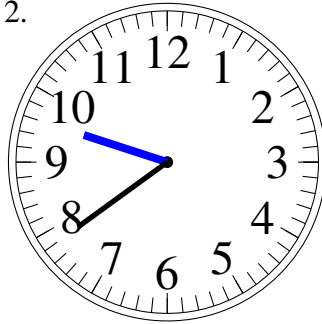
Dessiner les aiguilles de l'horloge pour qu'elles montrent le temps indiqué.

1.



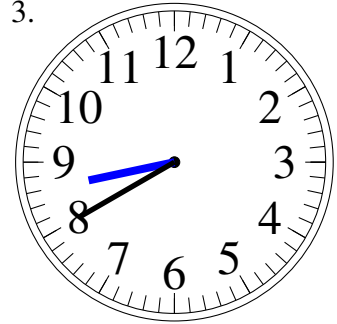
7:37

2.



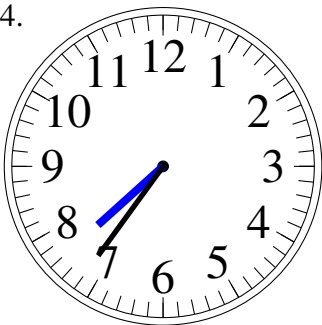
9:39

3.



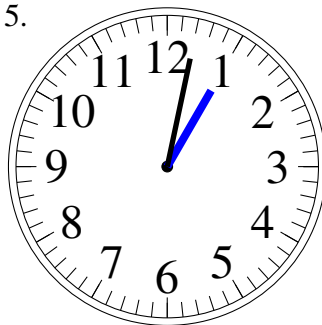
8:40

4.



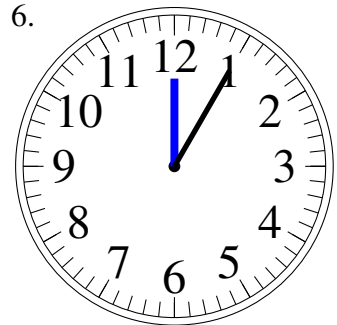
7:36

5.



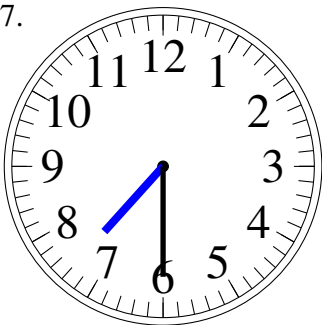
1:02

6.



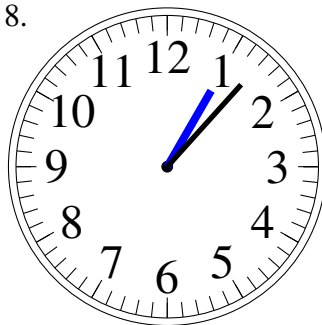
12:05

7.



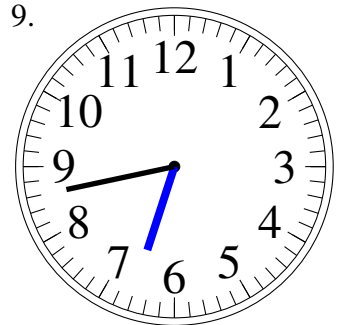
7:30

8.



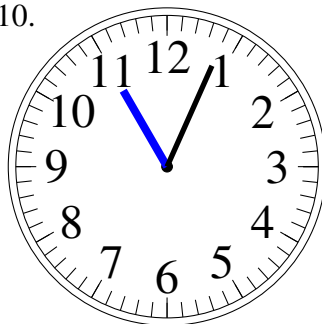
1:07

9.



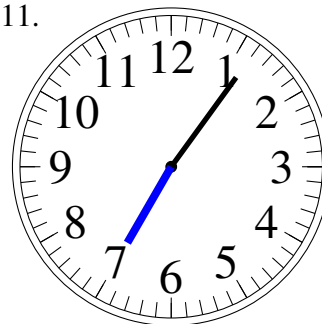
6:43

10.



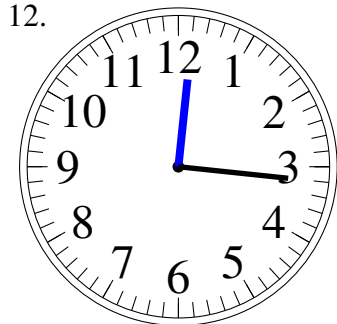
11:04

11.



7:06

12.



12:16