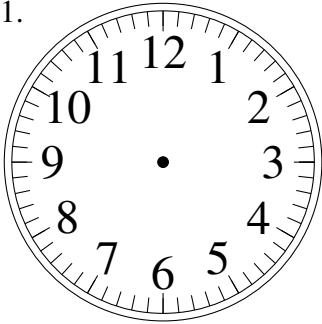


Esquisse d'Horloges Analogues (H)

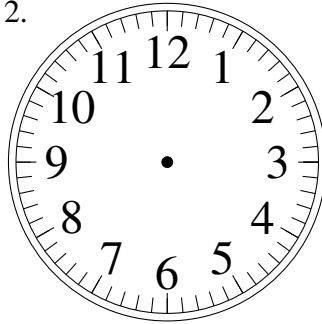
Dessiner les aiguilles de l'horloge pour qu'elles montrent le temps indiqué.

1.



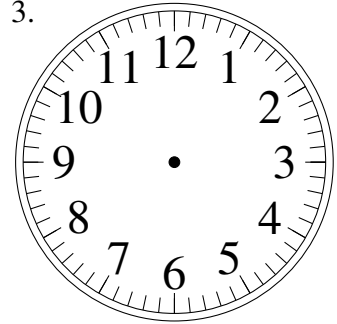
5:24

2.



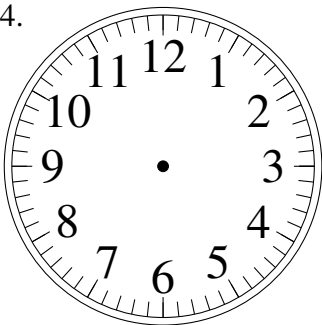
2:19

3.



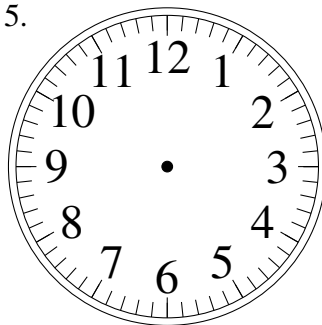
9:48

4.



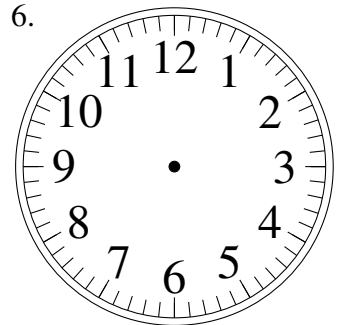
9:47

5.



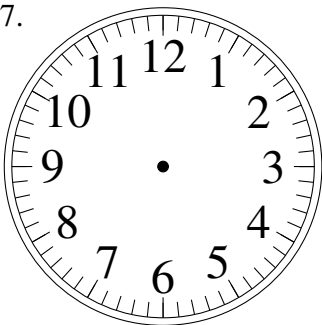
4:36

6.



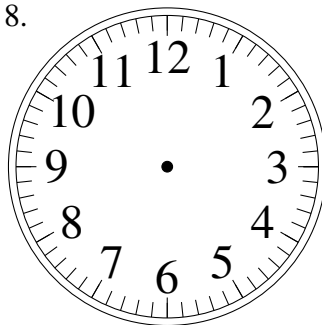
4:07

7.



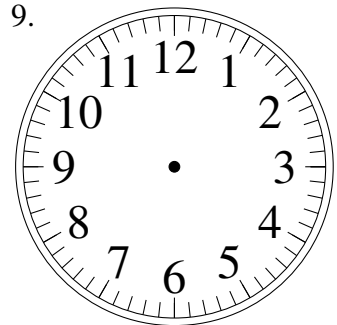
2:04

8.



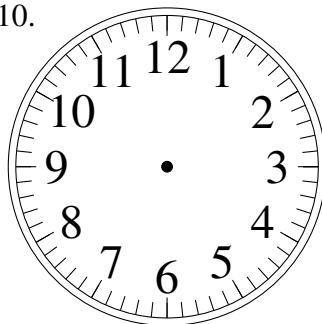
11:25

9.



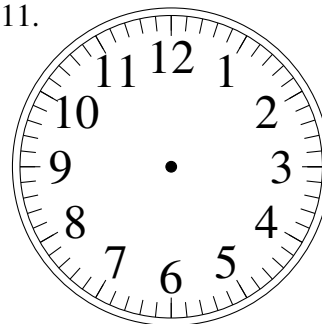
5:40

10.



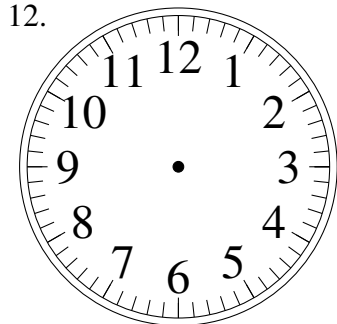
2:04

11.



10:03

12.

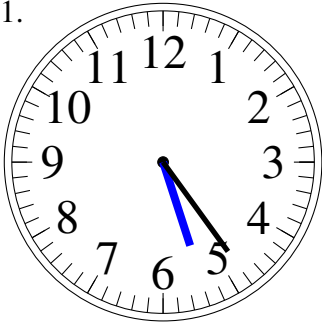


6:30

Esquisse d'Horloges Analogues (H) Solutions

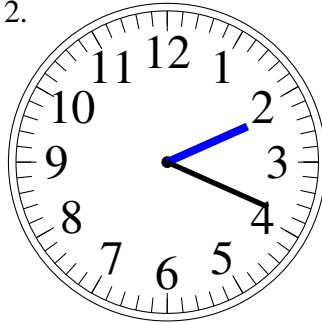
Dessiner les aiguilles de l'horloge pour qu'elles montrent le temps indiqué.

1.



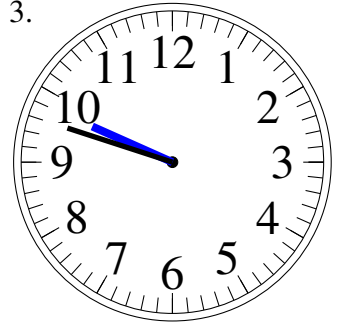
5:24

2.



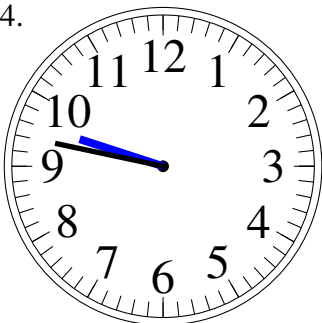
2:19

3.



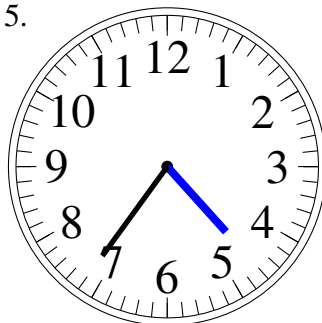
9:48

4.



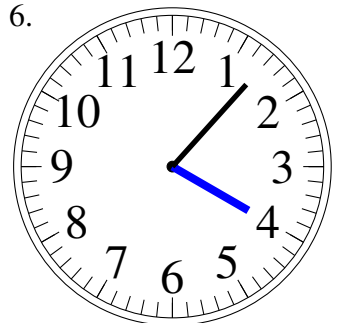
9:47

5.



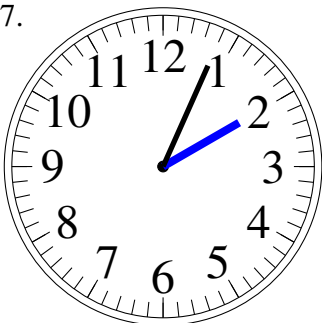
4:36

6.



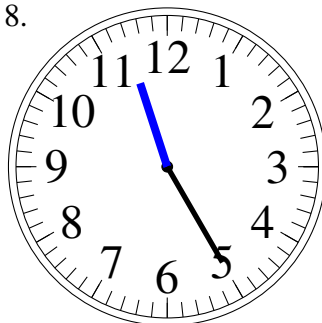
4:07

7.



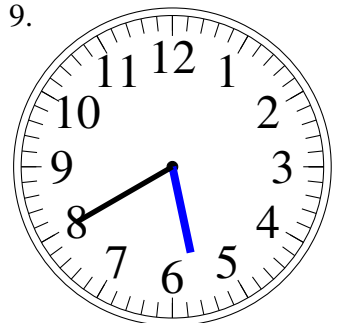
2:04

8.



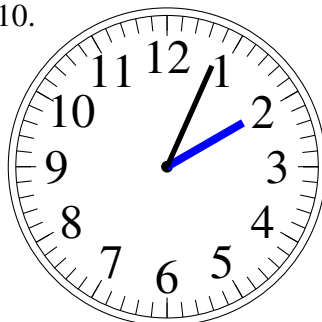
11:25

9.



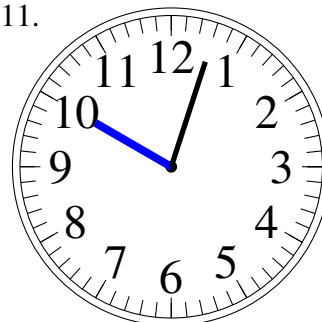
5:40

10.



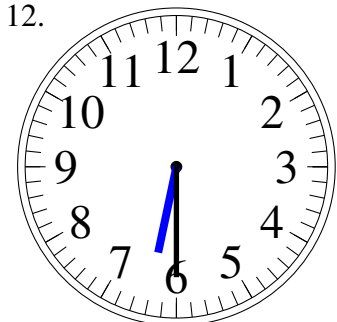
2:04

11.



10:03

12.



6:30