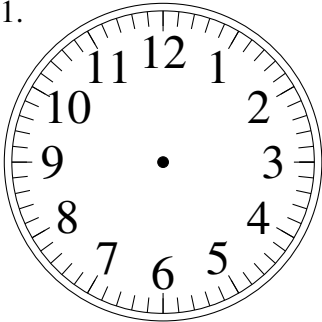


# Esquisse d'Horloges Analogues (E)

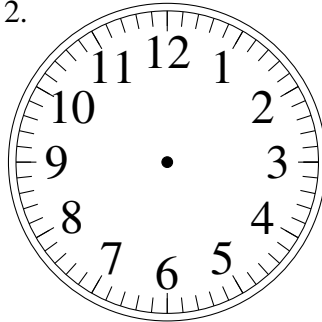
Dessiner les aiguilles de l'horloge pour qu'elles montrent le temps indiqué.

1.



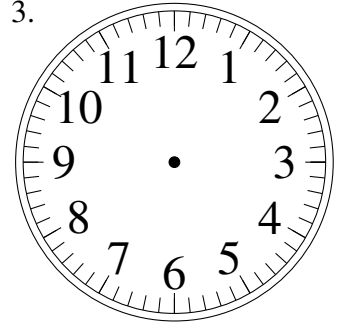
10:27

2.



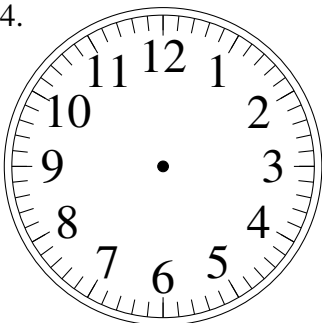
2:45

3.



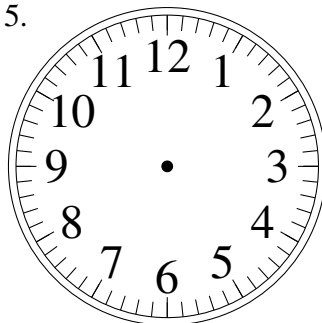
4:41

4.



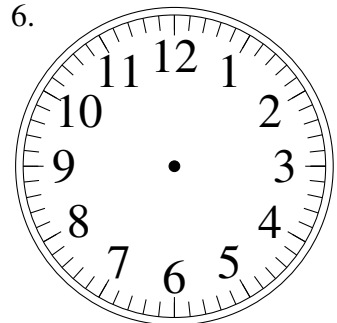
2:42

5.



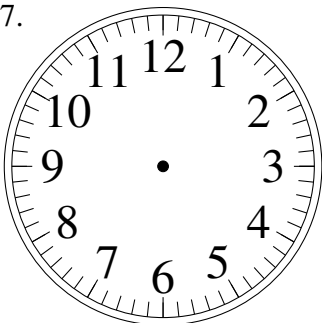
2:24

6.



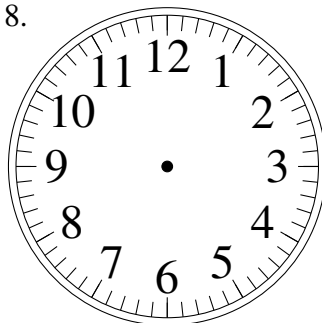
5:10

7.



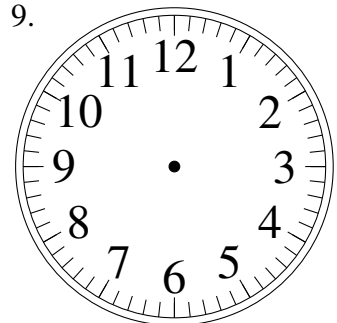
5:43

8.



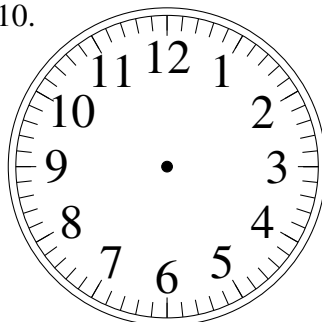
8:08

9.



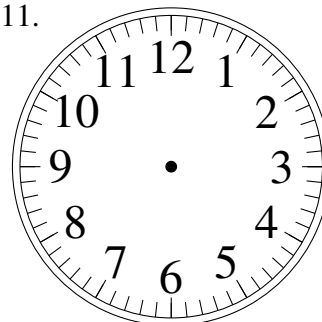
12:01

10.



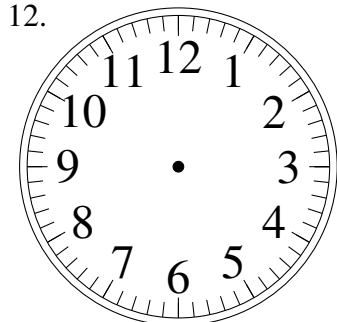
11:10

11.



4:30

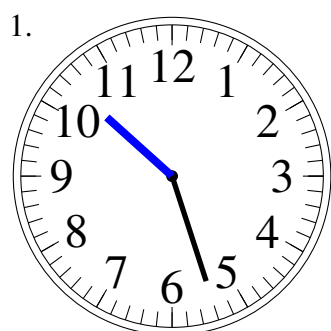
12.



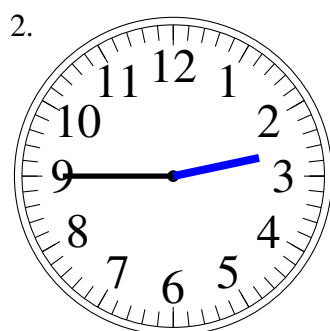
4:47

# Esquisse d'Horloges Analogues (E) Solutions

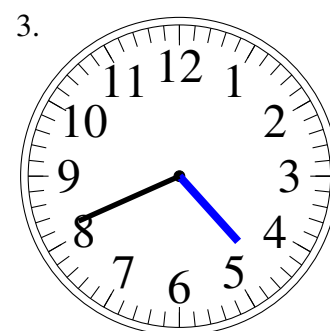
Dessiner les aiguilles de l'horloge pour qu'elles montrent le temps indiqué.



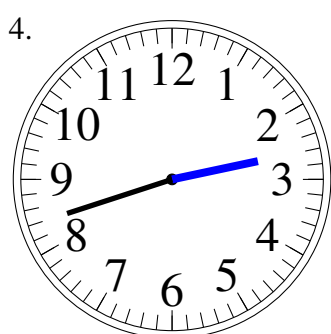
10:27



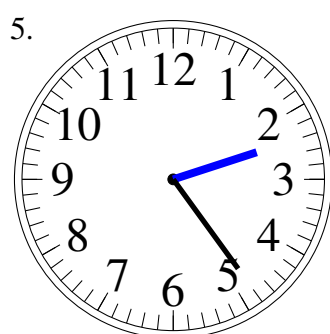
2:45



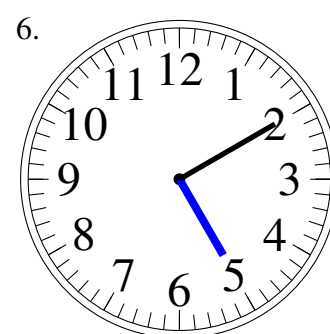
4:41



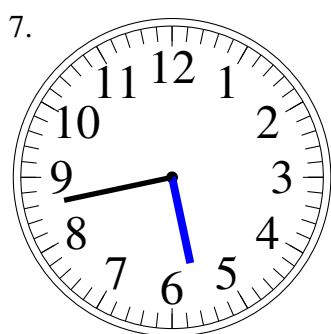
2:42



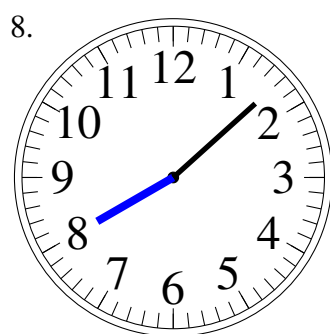
2:24



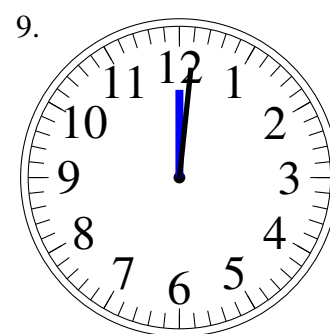
5:10



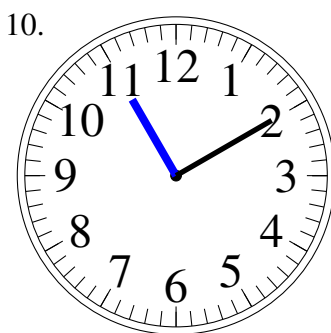
5:43



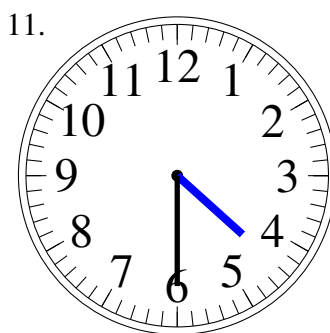
8:08



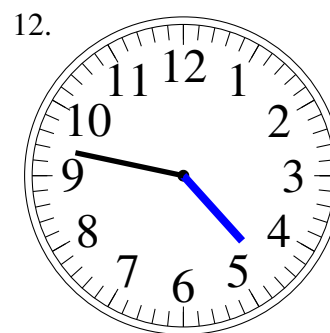
12:01



11:10



4:30



4:47