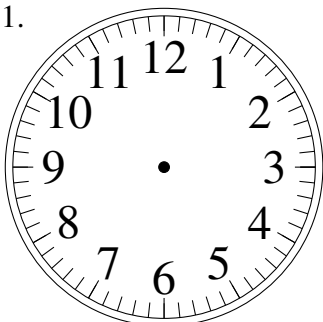


Esquisse d'Horloges Analogues (C)

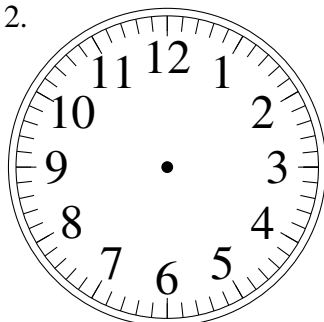
Dessiner les aiguilles de l'horloge pour qu'elles montrent le temps indiqué.

1.



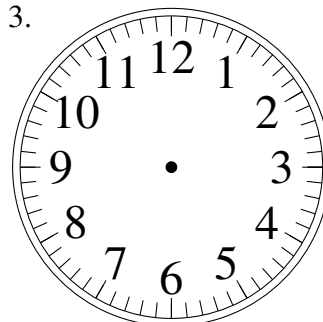
11:51

2.



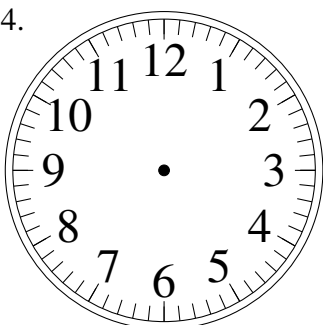
12:34

3.



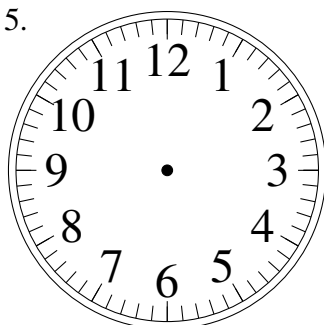
8:04

4.



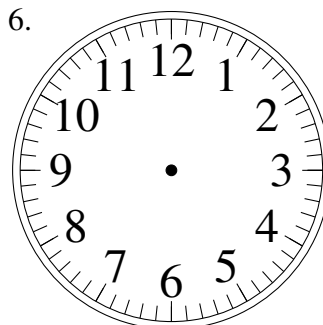
4:40

5.



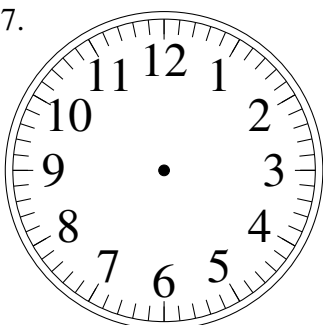
11:30

6.



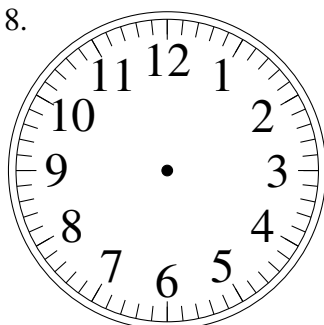
5:35

7.



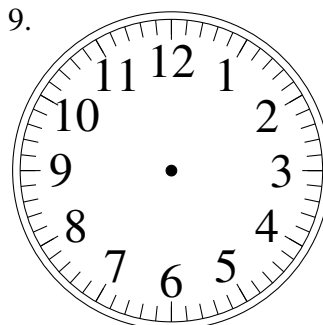
7:36

8.



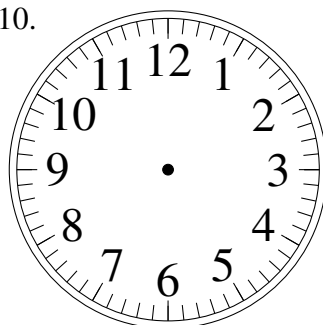
11:18

9.



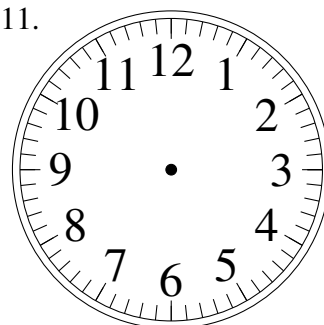
7:16

10.



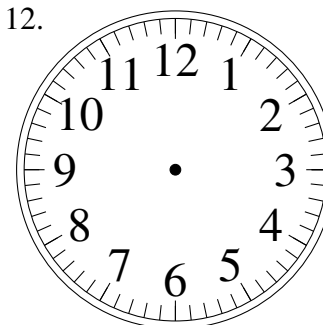
10:55

11.



10:42

12.

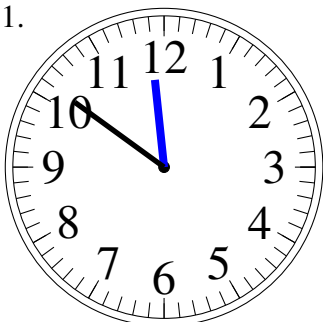


6:00

Esquisse d'Horloges Analogues (C) Solutions

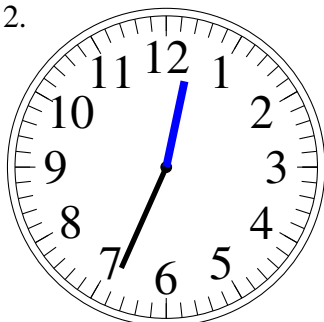
Dessiner les aiguilles de l'horloge pour qu'elles montrent le temps indiqué.

1.



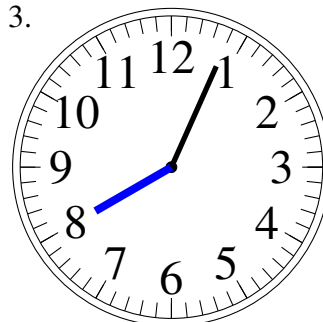
11:51

2.



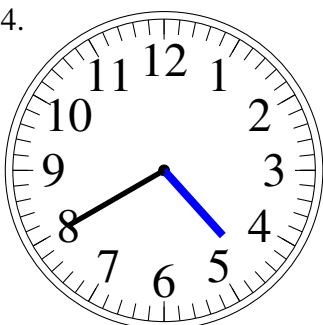
12:34

3.



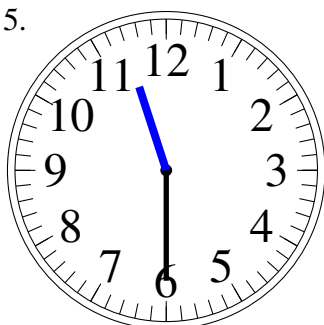
8:04

4.



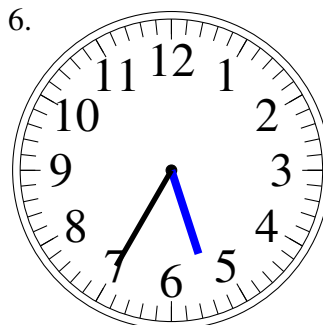
4:40

5.



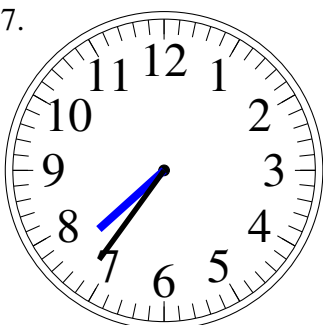
11:30

6.



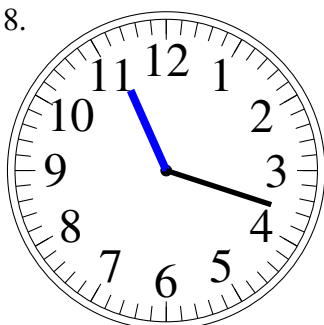
5:35

7.



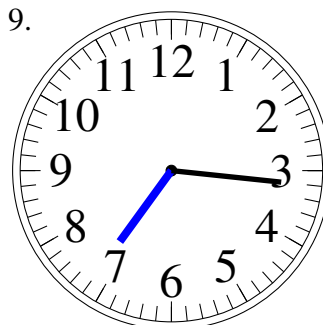
7:36

8.



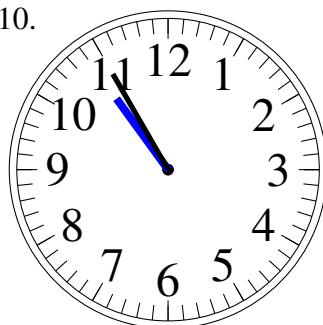
11:18

9.



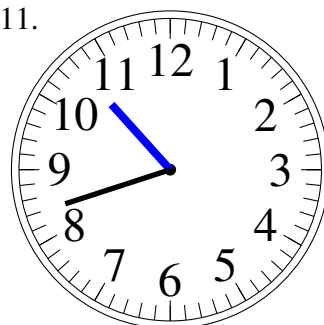
7:16

10.



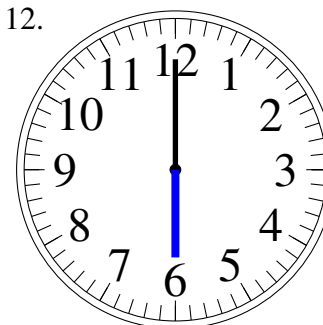
10:55

11.



10:42

12.



6:00